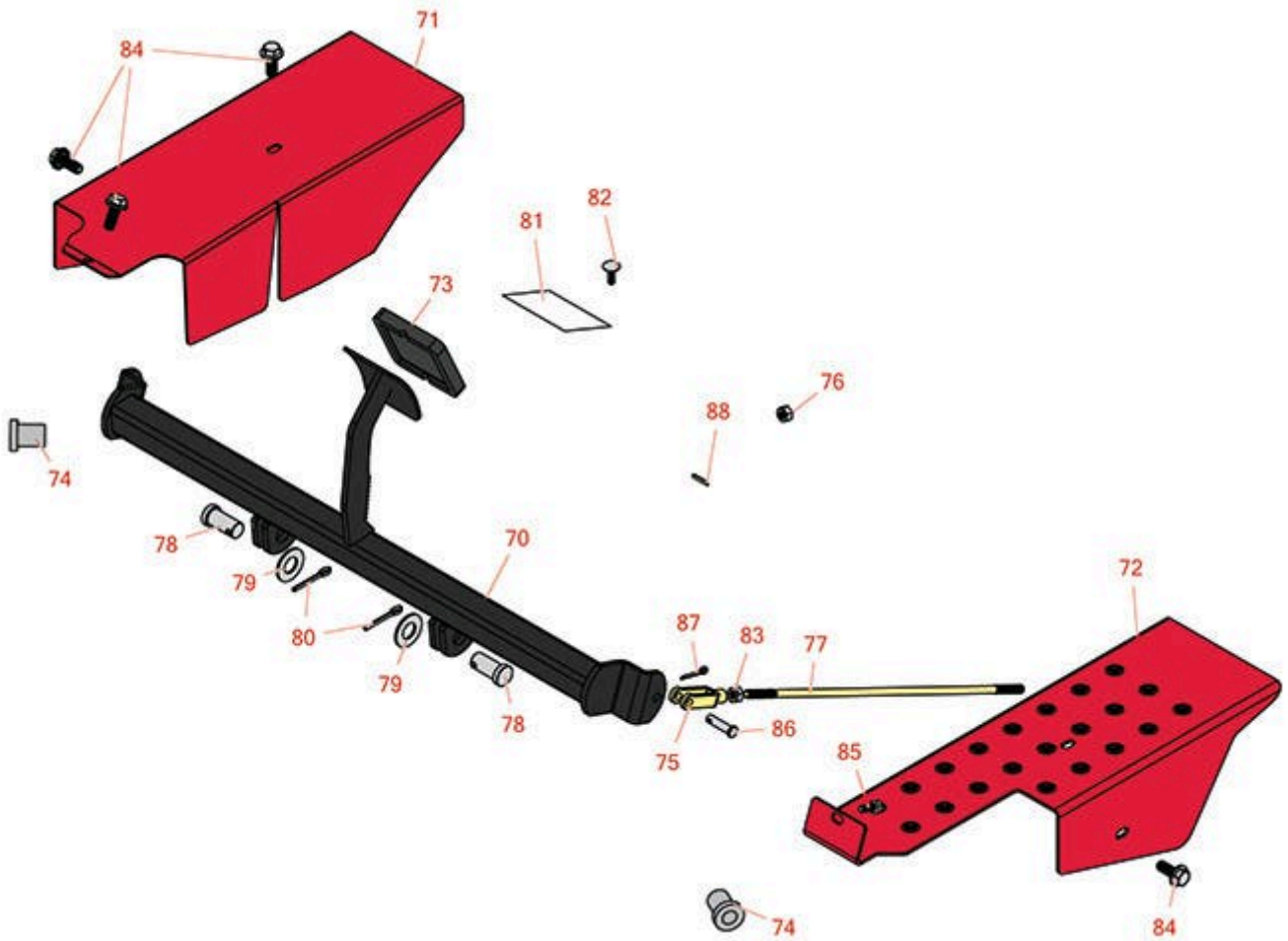




Replaces Toro Greensmaster 3200 & 3200-D Parts

Traction Unit
Frame and Brake Pedal



All original equipment manufacturers names and part numbers are used for identification purposes only, and we are in no way implying that our products are original equipment parts. Prices subject to change without notice.



Replaces Toro Greensmaster 3200 & 3200-D Parts

*Traction Unit
Frame and Brake Pedal*



| Item No | R&R Part No. | OEM Part No. | Description | Qty Req | Order Quantity |
|---------|--------------------|---|-----------------------------|---------|----------------|
| 70 | R93-2075-01 | 93-2075, 93-2075-01 | Brake Pedal Assy | 1 | |
| 71 | R93-2072-01 | 93-2072, 93-2072-01 | Shield - Wheel - RH | 1 | |
| 72 | R93-2073-01 | 93-2073, 93-2073-01 | Shield - Wheel - LH | 1 | |
| 73 | R93-7629 | 27-7570, 27-7580, 49-6170, 93-7629, 93-8743 | Rubber Foot Pad - Brake | 1 | |
| 74 | R83-1700 | 83-1700 | Bushing - Flanged - Plastic | 3 | |
| 75 | R282-2 | 1-303105, 282-2 | Yoke | 2 | |
| 76 | R3220-2 | 01-191-0524, 3220-2 | Nut - Jam - 5/16-24 | 2 | |
| 77 | R93-2069 | 93-2069 | Rod - Brake | 2 | |
| 78 | R283-87 | 283-87 | Pin - Clevis | 2 | |
| 79 | R3256-27 | 24-15-BD, 32-7820, 3256-27, 7-0131, Jul-78 | Washer - Flat 5/8 SAE | 2 | |
| 80 | R3272-11 | 01-151-0010, 01-151-0040, 28-18-D, 28-28-D, 3211-72, 3272-11 | Pin - Cotter | 2 | |
| 81 | R93-8062 | 93-8062 | Decal - Parking Brake | 1 | |
| 82 | R33123-016 | 33123-016, 33123-020 | Bolt - Carriage M6 x 20 | 2 | |

All original equipment manufacturers names and part numbers are used for identification purposes only, and we are in no way implying that our products are original equipment parts. Prices subject to change without notice.



Replaces Toro Greensmaster 3200 & 3200-D Parts

*Traction Unit
Frame and Brake Pedal*



| Item No | R&R Part No. | OEM Part No. | Description | Qty Req | Order Quantity |
|---------|------------------|--|---------------------------------|---------|----------------|
| 83 | R33024-00 | 33024-00 | Locknut - 8mm x 1.25 | 1 | |
| 84 | R32144-14 | 32104-32, 32104-49, 32144-14 | Bolt - Hex Washer 5/16-18 x 5/8 | 5 | |
| 85 | R66-3160 | 33114-020, 43-0110, 48-7710, 66-3160 | Bolt - Flanged Hex HD | 1 | |
| 86 | R283-61 | 283-61, 86-2140, N/A, R3296-12 | Pin - Clevis 5/16 x 1-1/8 | 2 | |
| 87 | R1023-4 | 01-151-0150, 1023-4, 19-6220, 214-14, 215-54, 28-9-D, 3272-4, 3272-6, 513567, 932008P | Pin - Cotter 3/32 x 3/4 | 2 | |
| 88 | R32121-50 | 32121-50 | Pin - Roll Spiral Lock 1/8 1147 | 1 | |

All original equipment manufacturers names and part numbers are used for identification purposes only, and we are in no way implying that our products are original equipment parts. Prices subject to change without notice.