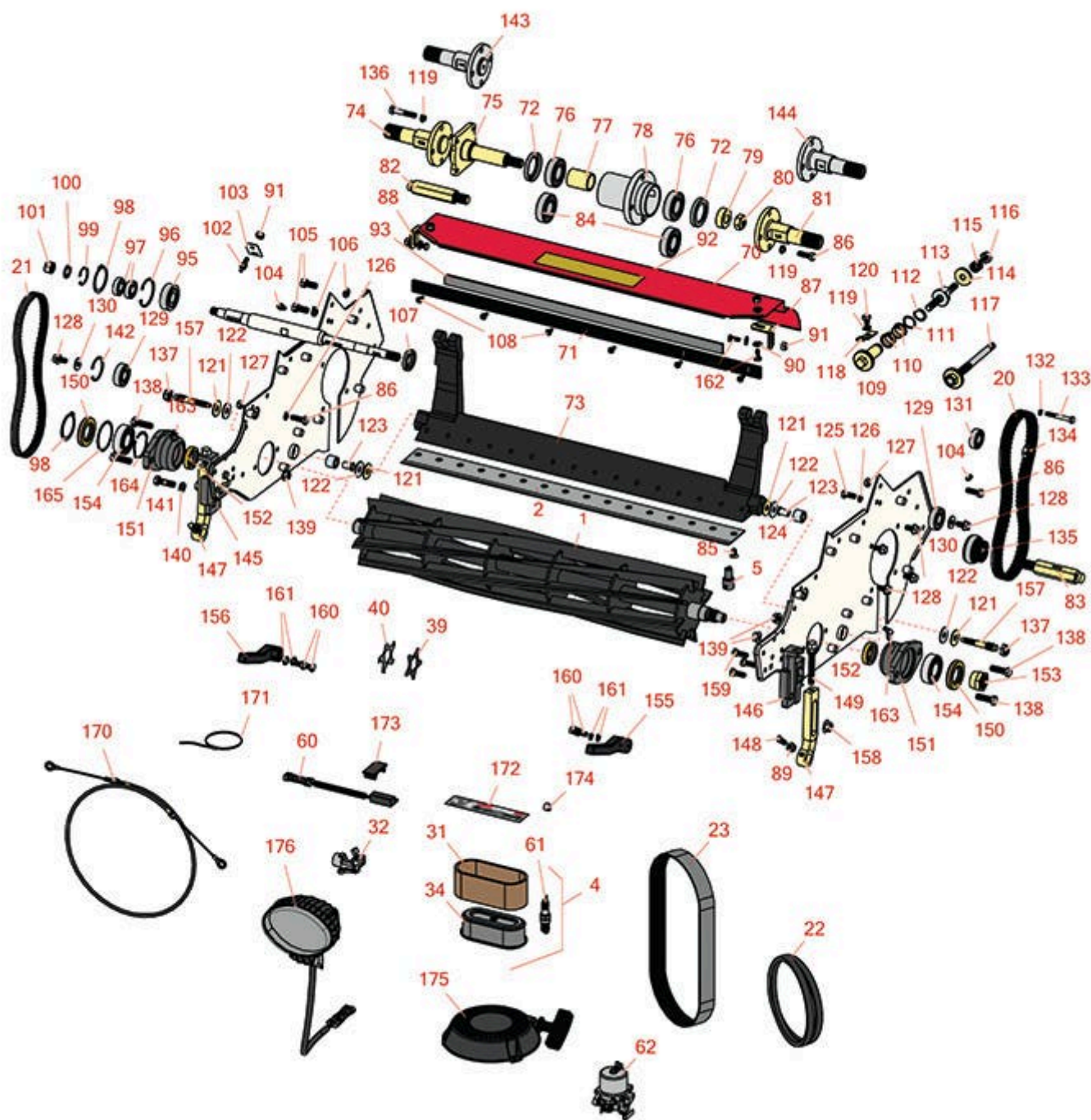




Replaces Toro Greensmaster 1600 Parts

Mower - Model 04060

Reel & Bedknife



All original equipment manufacturers names and part numbers are used for identification purposes only, and we are in no way implying that our products are original equipment parts. Prices subject to change without notice.



Replaces Toro Greensmaster 1600 Parts

Mower - Model 04060

Reel & Bedknife



Item No	R&R Part No.	OEM Part No.	Description	Qty Req	Order Quantity
---------	--------------	--------------	-------------	---------	----------------

R&R Reels, Lifetime Guaranteed

1	R95-0900	93-9029, 95-0900	Reel - 8 Blade 26 in	1
---	-----------------	---------------------	----------------------	---

Detail Description: R&R Reel blades are expertly crafted from premium high carbon-boron alloy steel, heat-treated to perfectly complement both R&R and OEM bedknives. Each reel undergoes precision cylindrical grinding on bearing surfaces, followed by relief grinding for optimal performance. Advanced computer balancing ensures extended reel and bearing life. Backed by our lifetime guarantee against defects in materials and craftsmanship under normal use, R&R Reels deliver unmatched durability and cutting precision you can trust.:

1	R112-9276	112-9276	Reel - 11 Blade 26 in	1
---	------------------	----------	-----------------------	---

Detail Description: R&R Reel blades are manufactured from high carbon-boron alloy steel and then hardened to RC46-49 to match the temper of our bedknives and original equipment bedknives. All R&R Reels are cylindrically ground on bearing surfaces and then relief ground. Reels are then precision computer balanced for extended bearing and reel life. R&R Products Reels are guaranteed against defects in material and workmanship for the life of the reel under normal use.:

R&R Bedknives, Lifetime Guaranteed

2	R150467		Bedknife - Thick	1
---	----------------	--	------------------	---

Detail Description: R&R Bedknives are manufactured from high carbon-boron alloy steel and then hardened to RC46-49 to match the temper of our reel blades and original equipment reels. Bedknives are surface ground on the top and front edge and straightened three times before being packaged with oil for rust prevention. All R&R Bedknives now have an increased front edge grind for added life. All R&R Bedknives are guaranteed against defects in material and workmanship under normal use for the life of the part.:

2	R93-9015	93-9015	Bedknife - Thin	1
---	-----------------	---------	-----------------	---

Detail Description: R&R Bedknives are manufactured from high carbon-boron alloy steel and then hardened to RC46-49 to match the temper of our reel blades and original equipment reels. Bedknives are surface ground on the top and front edge and straightened three times before being packaged with oil for rust prevention. All R&R Bedknives now have an increased front edge grind for added life. All R&R Bedknives are guaranteed against defects in material and workmanship under normal use for the life of the part.:

2	R94-5885	94-5885	Bedknife - Tournament	1
---	-----------------	---------	-----------------------	---

All original equipment manufacturers names and part numbers are used for identification purposes only, and we are in no way implying that our products are original equipment parts. Prices subject to change without notice.



Replaces Toro Greensmaster 1600 Parts

Mower - Model 04060

Reel & Bedknife



Item No	R&R Part No.	OEM Part No.	Description	Qty Req	Order Quantity
---------	--------------	--------------	-------------	---------	----------------

Detail Description: R&R Bedknives are manufactured from high carbon-boron alloy steel and then hardened to RC46-49 to match the temper of our reel blades and original equipment reels. Bedknives are surface ground on the top and front edge and straightened three times before being packaged with oil for rust prevention. All R&R Bedknives now have an increased front edge grind for added life. All R&R Bedknives are guaranteed against defects in material and workmanship under normal use for the life of the part.:

2	R104-2646	104-2646	Bedknife - High Cut 5/16-1 in	1
---	------------------	----------	-------------------------------	---

Detail Description: R&R Bedknives are manufactured from high carbon-boron alloy steel and then hardened to RC46-49 to match the temper of our reel blades and original equipment reels. Bedknives are surface ground on the top and front edge and straightened three times before being packaged with oil for rust prevention. All R&R Bedknives now have an increased front edge grind for added life. All R&R Bedknives are guaranteed against defects in material and workmanship under normal use for the life of the part.:

2	R107-8181	107-8181	Bedknife - Super Thick Cut	1
---	------------------	----------	----------------------------	---

Detail Description: R&R Bedknives are manufactured from high carbon-boron alloy steel and then hardened to RC46-49 to match the temper of our reel blades and original equipment reels. Bedknives are surface ground on the top and front edge and straightened three times before being packaged with oil for rust prevention. All R&R Bedknives now have an increased front edge grind for added life. All R&R Bedknives are guaranteed against defects in material and workmanship under normal use for the life of the part.:

Overhaul Kits & Service Tools

4	R30067	30067	Filter Kit - 400 Hour Maintenance	1
---	---------------	-------	-----------------------------------	---

Detail Description: Includes: 1 ea: RAK11013-2132 Air Filter, RAK11013-2133 Air Filter & RN7734 NGK Spark Plug:

5	R51-0880	51-0880	Bedknife Screw Driver Tool	1
---	-----------------	---------	----------------------------	---

Detail Description: Easily install and remove bed knife screws with the help of a ratchet with 3/8" drive. Tool manufactured with hardened alloy steel.:

Belts

20	R150527	65-6210	Belt - Drum Drive	1
----	----------------	---------	-------------------	---

21	R150525	65-6200	Belt - Reel Drive	1
----	----------------	---------	-------------------	---

22	R92-9218	92-9218	Belt - Engine Set of 2	1
----	-----------------	---------	------------------------	---

All original equipment manufacturers names and part numbers are used for identification purposes only, and we are in no way implying that our products are original equipment parts. Prices subject to change without notice.



Replaces Toro Greensmaster 1600 Parts

Mower - Model 04060

Reel & Bedknife



Item No	R&R Part No.	OEM Part No.	Description	Qty Req	Order Quantity
23	R65-9080	65-9080	Belt - Countershaft	1	

Filters

30	RAK11013-2132	93-8636	Kawasaki Element-Air Filter	1	
30	RRF10182	93-8636	SilverGuard Air Filter	1	
31	RAK11013-2133	93-8637	Kawasaki Pre Cleaner Foam - Air Filter	1	
31	RRF10410	93-8637	SilverGuard Foam Filter	1	
32	R121-0675	121-0675	Fuel Strainer Assy	1	

Gauges and Controls

60	R100-1270	100-1270	Sensor - Proximity	1	
61	RN7131	108-2557	NGK Spark Plug - BPR6ES	1	
61	RN7734	108-2557, 93-8584	NGK Spark Plug - BPR5ES	1	
62	R115-1869	115-1869	Carburetor Assy	1	

Blades

40	R110-2393	110-2393	Verti-Cut Blade - 2-3/8 w/7/8 Hex Carbide Tipped	42	
41	R70-1170	70-1170	Verti-Cut Blade - 2-3/8 w/7/8 Hex	42	

Other Parts Available

70	R110-7370	110-7370	Grass Shield Assy	1	
70	R94-9009	94-9009	Shield - Grass	1	
71	R94-5879	94-5879	Bar - Cut-Off	1	
72	R253-159	253-159	Seal - Drum	2	

All original equipment manufacturers names and part numbers are used for identification purposes only, and we are in no way implying that our products are original equipment parts. Prices subject to change without notice.



Replaces Toro Greensmaster 1600 Parts

Mower - Model 04060

Reel & Bedknife



Item No	R&R Part No.	OEM Part No.	Description	Qty Req	Order Quantity
73	R112-9278-03	112-9278-03	Bedbar - Aggressive - 26 in	1	
<i>Tech Note: Ser# 280000001-311999999:</i>					
73	R93-9049-01	93-9049, 93-9049-01	Bed Bar	1	
<i>Tech Note: Ser# 60001-99999 and 200000001-270999999:</i>					
74	R88-7510	88-7510	Shaft - Extension RH Drum	1	
75	R94-5850	94-5850	Spindle - Rear Roller Drum	1	
76	RA203605	251-82, 6610	Bearing	2	
77	R65-6520	65-6520	Spacer	1	
78	R132-6971	132-6971, 94-5852	Hub-Drum	1	
79	R65-6530	65-6530	Spacer - Seal	1	
80	R3296-33	3296-33	Locknut - 5/8-18 ESNA Jam	1	
81	R88-7520	88-7520	Shaft - Extension LH Drum	1	
82	R88-7590	88-7590	Shaft - Transport Wheel RH	1	
83	R88-7580	88-7580	Shaft - Transport Wheel LH	1	
84	R251-257	251-257, 251-339	Bearing	2	
85	R150477	57-4910	Screw - Bedknife 5/16-18 x 1/2	16	
85	R119-4151	119-4151	Screw - Bedknife 5/16-18 x 17/32	16	

All original equipment manufacturers names and part numbers are used for identification purposes only, and we are in no way implying that our products are original equipment parts. Prices subject to change without notice.



Replaces Toro Greensmaster 1600 Parts

Mower - Model 04060

Reel & Bedknife



Item No	R&R Part No.	OEM Part No.	Description	Qty Req	Order Quantity
86	R322-5	01-178-0508, 20-26-AD, 20-26-AGD, 30-9000, 322-5, 513341, 519755, 908019P, N/A	Bolt - Hex HD 5/16-18 x 1	3	
87	R65-6450	65-6450	Bracket - LH	1	
88	R65-6460	65-6460	Bracket - RH	1	
89	R443106	01-188-0518, 22-12-AJD, 32111-4, 3217-4, 3217-6, 3218-2, 513295, 513412, 915112P, 915978, 915979	Nut - 5/16-18 Y/Zinc Plated	2	
90	R3256-22	24-9-BD, 3-1032, 3256-1, 3256-22, 93-0954, 93-0989	Washer - Flat 1/4 Yellow	6	
91	R301504	2296-42, 301504, 32127-24, 32128-33, 32146-17, 3296-16, 3296-42, 3296-42 , 915661P	Locknut - ESNA 1/4-20	4	
92	R93-8064	93-8064	Decal - Warning	1	
93	R95-1636	95-1636	Seal - Strip Grass Shield	1	

All original equipment manufacturers names and part numbers are used for identification purposes only, and we are in no way implying that our products are original equipment parts. Prices subject to change without notice.



Replaces Toro Greensmaster 1600 Parts

Mower - Model 04060

Reel & Bedknife



Item No	R&R Part No.	OEM Part No.	Description	Qty Req	Order Quantity
95	R251-318	251-11, 251-204, 251-318, 251-38, 251-89	Bearing - Ball	1	
96	R32151-75	100-6594, 19-4590, 32120-11, 32120-75, 32151-75	Retaining Ring	2	
97	R251-336	251-336	Bearing	2	
98	R32151-95	32151-90, 32151-95	Retaining Ring	1	
99	R32151-89	32151-89	Retaining Ring - Bowed	1	
100	R3254-4	21-3890, 26-8050, 3254-4	Washer - Lock 1/2 Z Int Star	1	
101	R3219-5	01-188-0820, 22-15-BJD, 22-15-BJKD, 3219-5	Nut - 1/2-20	1	
102	R93-9014	65-7020, 92-7676, 93-9014	Pin-Clutch, Actuat	1	
103	R65-6290	65-6259, 65-6290	Spring-Detent	1	

All original equipment manufacturers names and part numbers are used for identification purposes only, and we are in no way implying that our products are original equipment parts. Prices subject to change without notice.



Replaces Toro Greensmaster 1600 Parts

Mower - Model 04060

Reel & Bedknife



Item No	R&R Part No.	OEM Part No.	Description	Qty Req	Order Quantity
104	R302-5	21-6010, 302-11, 302-37, 302-47, 302-5, 302-57, 302-58, 302-6, 31-0300, 32-9660, 60-0800, 62-3880, 92-4181	Fitting - Grease	2	
105	R400260	01-178-0605, 18-4100, 19-8270, 323-3, 323-33, 323-34, 323-5	Bolt - Hex HD 3/8-16 x 7/8	2	
106	R3253-21	215-51, 30-8470, 3253-21, Jul-12	Washer - Lock 3/8	4	
107	R364170	253-118, 62-3400	Seal	1	
108	R32144-73	104-2065, 32144-73	Screw - Machine Hex Washer Head	5	
109	R106-5363	106-5363	Shaft - Adjusting - Bed Bar - Stainless	2	
<i>Tech Note: Ser# 280000001-311999999:</i>					
110	R106-5344	106-5344	Bushing - Flanged and Keyed	4	
111	R106-5335	106-5335	Wave Washer - Reel Adjusting	2	
112	R32120-93	32120-93	Snap Ring - HD	2	

All original equipment manufacturers names and part numbers are used for identification purposes only, and we are in no way implying that our products are original equipment parts. Prices subject to change without notice.



Replaces Toro Greensmaster 1600 Parts

Mower - Model 04060

Reel & Bedknife



Item No	R&R Part No.	OEM Part No.	Description	Qty Req	Order Quantity
113	R99-2096	99-2096	Screw - Bed Bar Adjustment - M10 Thrd 1 End	2	
114	R99-2098	99-2098	Washer - Bed Bar Adjuster	2	
115	R99-3755	99-3755	Spring - Bed Bar Adjusting	2	
116	R33025-00	32025-00, 33025-00	Locknut - 10mm x 1.5 Jam	2	
117	R94-5873	94-5873	Handle - Adjusting Bed Bar	2	
<i>Tech Note: Ser# 60001-99999 and 200000001-270999999:</i>					
118	R99-2097	99-2097	Detent - Bed Bar Adjuster	2	
119	R3253-4	01-166-0110, 01-166-0510, 23-10-GD, 24-7170, 30-8520, 3253-4, 48-9350, 48-9360, 48-9570, 68-9420, 99-7577	Washer - Lock 5/16 Zinc	5	
120	R322-26	322-26	Bolt - Hx HD 5/16-18 x 3/8	2	
121	R52-2860	119-4150, 52-2860	Washer - Bed Bar Pivot	4	
122	R52-2900	52-2900	Washer - Nylon	4	
123	R52-2890	52-2890	Bushing - Flanged	2	
124	R63-9510	63-9480, 63-9510	Bushing - Rubber For Bed Bar	2	

All original equipment manufacturers names and part numbers are used for identification purposes only, and we are in no way implying that our products are original equipment parts. Prices subject to change without notice.



Replaces Toro Greensmaster 1600 Parts

Mower - Model 04060

Reel & Bedknife



Item No	R&R Part No.	OEM Part No.	Description	Qty Req	Order Quantity
125	R322-3	01-150-1420, 01-178-0506, 20-24-AD, 20-24-AGD, 322-3, 48-9270, 513339, 908017P	Bolt - Hex HD 5/16-18 x 3/4	2	
126	R3254-2	3254-2	Washer-Lock, 5/16 Int Star	2	
127	R3296-29	1-804256, 3290-357, 3296-29, 915662P	Locknut - 5/16-18 ESNA	2	
128	R3234-14	3234-14, 3234-23	Bolt - Hex Serrated Washer HD	6	
129	R38-7820	100-1048, 251-277, 251-5, 38-7820	Bearing - Ball	1	
130	R88-7200	88-7200	Washer - Flat	2	
131	R251-338	251-338	Bearing - Ball	1	
132	R3254-8	3254-8	Washer - Lock 1/4 Int Star Z	1	
133	R400120	01-150-0990, 01-178-0416, 02-150-0990, 321-11, 3222-4, 33114-010, 33114-060, 513327, 908470	Bolt - Hex HD 1/4-20 x 2	8	
134	R3296-57	3296-57	Locknut - Nylon Zinc Jam	2	

All original equipment manufacturers names and part numbers are used for identification purposes only, and we are in no way implying that our products are original equipment parts. Prices subject to change without notice.



Replaces Toro Greensmaster 1600 Parts

Mower - Model 04060

Reel & Bedknife



Item No	R&R Part No.	OEM Part No.	Description	Qty Req	Order Quantity
135	R71-1360	251-219, 251-253, 251-254, 251-320, 71-1360, 88-7880, 94-3405	Bearing	2	
136	R19H3130	322-9, 3223-5	Bolt - Hex HD 5/16-18 x 1-3/4	1	
137	R3296-28	119-4154, 140-9234, 32127-34, 32128-7, 32128-8, 32136-7, 3296-28	Nut - 1/2-20 ESNA Jam	2	
138	R400264	01-150-0180, 01-178-0610, 20-48-AD, 20-48-AGD, 32-9160, 3224-3, 323-29, 323-7, 400264, 908035P	Bolt - Hex HD 3/8-16 x 1-1/4	2	
139	R3296-39	32127-25, 32128-36, 3290-357, 3296-17, 3296-22, 3296-39, 915663P, 99-7443	Locknut - 3/8-16 Nylon	3	
140	R3254-6	01-166-0010, 01-166-0280, 01-166-0610, 3253-5, 3254-18, 3254-6, 3290-223, 48-9370	Washer - Lock 3/8	2	

All original equipment manufacturers names and part numbers are used for identification purposes only, and we are in no way implying that our products are original equipment parts. Prices subject to change without notice.



Replaces Toro Greensmaster 1600 Parts

Mower - Model 04060

Reel & Bedknife



Item No	R&R Part No.	OEM Part No.	Description	Qty Req	Order Quantity
141	R400258	01-150-0800, 01-178-0600, 01-178-0606, 20-45-AD, 31-0200, 31-9910, 3224-1, 323-4	Bolt - Hex HD 3/8-16 x 3/4	2	
142	RA170040	32120-42, 52-6640, 74-9900, SG427625	Ring - Snap	1	
143	R132-3841	132-3841	Shaft- Drum Extension - RH	1	
144	R132-3842	132-3842	Shaft- Drum Extension - LH	1	
145	R93-6048	93-6048	Bracket - HOC RH	1	
146	R93-6049	93-6049	Bracket - HOC LH	1	
147	R93-6090	93-6090	Arm - Roller HOC	2	
148	R3242-4	3242-4	Screw - Set Sq HD 5/16-18 x 1	2	
149	R93-6051	93-6051	Bolt - HOC	2	
150	R253-163	253-163	Seal - Reel	2	
151	R65-8640	65-6090, 65-8640	Housing - Bearing	2	
152	R253-96	253-96	Seal - Oil Single Lip Reel	2	
153	R92-7302	65-8240, 86-7160, 92-7302	Locknut - Reel	1	
154	R251-342	251-342	Bearing - Reel	2	
155	R93-9018	93-9018	Rod - Basket LH	1	
156	R93-9017	93-9017	Rod - RH Basket	1	

All original equipment manufacturers names and part numbers are used for identification purposes only, and we are in no way implying that our products are original equipment parts. Prices subject to change without notice.



Replaces Toro Greensmaster 1600 Parts

Mower - Model 04060

Reel & Bedknife



Item No	R&R Part No.	OEM Part No.	Description	Qty Req	Order Quantity
157	R65-6270	119-4050, 65-6270	Bolt - Bed Bar	2	
157	R117-9493	117-9493	Bolt - Bed Bar - Hardened	1	
158	R32128-21	32128-21	Locknut - Flanged 3/8-16 Whiz Top Lock	2	
159	R92-8914	3231-5, 65-8530, 92-8914	Bolt - Tapered Face 5/16-18 x 7/8	4	
160	R322-2	322-2, 513338P	Bolt - Hex HD 5/16-18 x 5/8	4	
161	R3255-8	3255-8	Washer - Lock 5/16 Ext	4	
162	R400106	321-3, 513315, 908002P	Bolt - Hex HD 1/4-20 x 5/8	4	
163	R700414	302-11, 302-19, 302-4, 32-8170	Zerk - Grease 1/4-28 45 Deg	2	
164	R3290-485	3290-485	Washer - Wave	1	
165	R32151-92	32151-92	Retaining Ring	1	
170	R94-5870	94-5870	Cable - Clutch Assy	1	
171	R3M41933		Cable Ties - 6" Bulk Pkg/100	2	
<i>Detail Description: 3M Cable Ties are molded from 6/6 nylon and are available in a variety of sizes and styles, including weather-resistant black for outdoor use.:</i>					
172	R67-7960	27-2890, 62-5070, 67-7960	Decal - Warning	1	
173	R99-7420	100-8493, 99-7420	Plug-Hole	1	

All original equipment manufacturers names and part numbers are used for identification purposes only, and we are in no way implying that our products are original equipment parts. Prices subject to change without notice.



Replaces Toro Greensmaster 1600 Parts

Mower - Model 04060

Reel & Bedknife



Item No	R&R Part No.	OEM Part No.	Description	Qty Req	Order Quantity
174	R65-7910	65-7910	Spacer - Latch	2	
175	R93-8552	93-8552	Recoil Starter Assy	1	
176	R151712	108-6471, 112-9177, 94-9024	LED Oval Work Light - 12 LED 30w	2	

All original equipment manufacturers names and part numbers are used for identification purposes only, and we are in no way implying that our products are original equipment parts. Prices subject to change without notice.