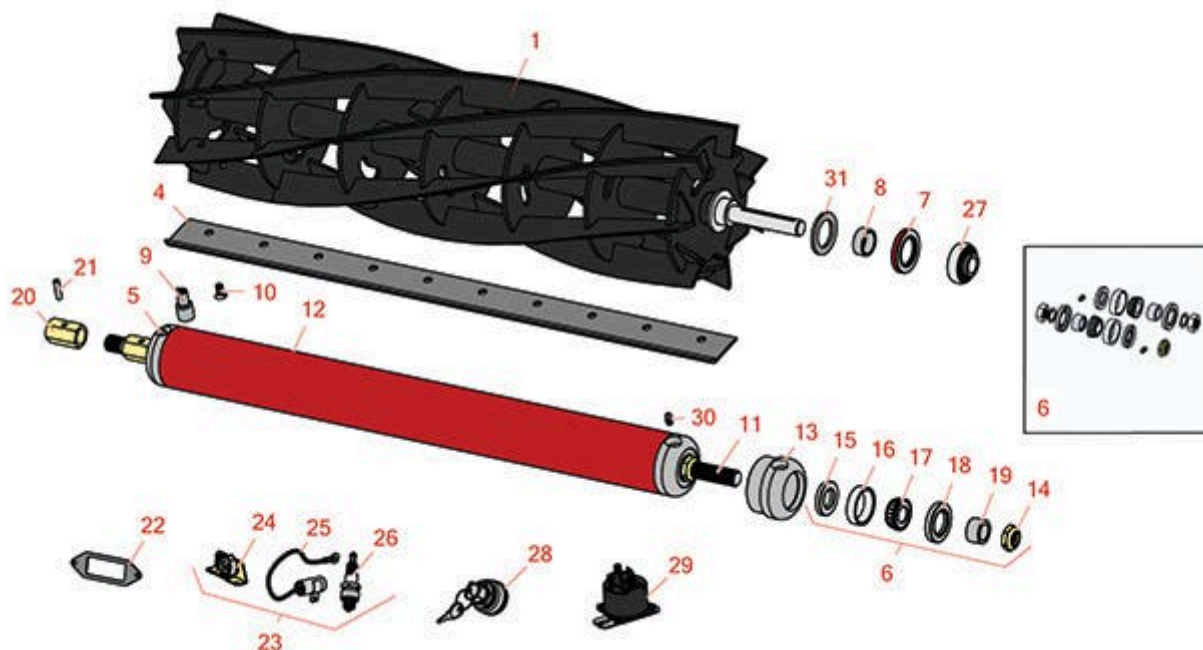




# Replaces Toro Super Pro Parts

Cutting Unit  
Reel & Bedknife



All original equipment manufacturers names and part numbers are used for identification purposes only, and we are in no way implying that our products are original equipment parts. Prices subject to change without notice.



# Replaces Toro Super Pro Parts

Cutting Unit  
Reel & Bedknife



Item No	R&R Part No.	OEM Part No.	Description	Qty Req	Order Quantity
---------	--------------	--------------	-------------	---------	----------------

## R&R Reels, Lifetime Guaranteed

1	<b>R8-5139</b>	8-5139, Jun-29	Reel - 5 Blade RH Splined	0	
---	----------------	-------------------	---------------------------	---	--

*Detail Description:* R&R Reel blades are expertly crafted from premium high carbon-boron alloy steel, heat-treated to perfectly complement both R&R and OEM bedknives. Each reel undergoes precision cylindrical grinding on bearing surfaces, followed by relief grinding for optimal performance. Advanced computer balancing ensures extended reel and bearing life. Backed by our lifetime guarantee against defects in materials and craftsmanship under normal use, R&R Reels deliver unmatched durability and cutting precision you can trust.:

1	<b>R8-5169</b>	8-5169, Jun-59	Reel - 7 Blade RH Splined	0	
---	----------------	-------------------	---------------------------	---	--

*Detail Description:* R&R Reel blades are expertly crafted from premium high carbon-boron alloy steel, heat-treated to perfectly complement both R&R and OEM bedknives. Each reel undergoes precision cylindrical grinding on bearing surfaces, followed by relief grinding for optimal performance. Advanced computer balancing ensures extended reel and bearing life. Backed by our lifetime guarantee against defects in materials and craftsmanship under normal use, R&R Reels deliver unmatched durability and cutting precision you can trust.:

1	<b>R8-5149</b>	8-5149, Jun-39	Reel - 5 Blade LH Splined	0	
---	----------------	-------------------	---------------------------	---	--

*Detail Description:* R&R Reel blades are expertly crafted from premium high carbon-boron alloy steel, heat-treated to perfectly complement both R&R and OEM bedknives. Each reel undergoes precision cylindrical grinding on bearing surfaces, followed by relief grinding for optimal performance. Advanced computer balancing ensures extended reel and bearing life. Backed by our lifetime guarantee against defects in materials and craftsmanship under normal use, R&R Reels deliver unmatched durability and cutting precision you can trust.:

1	<b>R8-5179</b>	8-5179, Jun-69	Reel - 7 Blade LH Splined	0	
---	----------------	-------------------	---------------------------	---	--

*Detail Description:* R&R Reel blades are expertly crafted from premium high carbon-boron alloy steel, heat-treated to perfectly complement both R&R and OEM bedknives. Each reel undergoes precision cylindrical grinding on bearing surfaces, followed by relief grinding for optimal performance. Advanced computer balancing ensures extended reel and bearing life. Backed by our lifetime guarantee against defects in materials and craftsmanship under normal use, R&R Reels deliver unmatched durability and cutting precision you can trust.:

## R&R Bedknives, Lifetime Guaranteed

4	<b>R38-7420</b>	38-7420	Bedknife	0	
---	-----------------	---------	----------	---	--

All original equipment manufacturers names and part numbers are used for identification purposes only, and we are in no way implying that our products are original equipment parts. Prices subject to change without notice.



# Replaces Toro Super Pro Parts

Cutting Unit  
Reel & Bedknife



Item No	R&R Part No.	OEM Part No.	Description	Qty Req	Order Quantity
---------	--------------	--------------	-------------	---------	----------------

*Detail Description: R&R Bedknives are manufactured from high carbon-boron alloy steel and then hardened to RC46-49 to match the temper of our reel blades and original equipment reels. Bedknives are surface ground on the top and front edge and straightened three times before being packaged with oil for rust prevention. All R&R Bedknives now have an increased front edge grind for added life. All R&R Bedknives are guaranteed against defects in material and workmanship under normal use for the life of the part.:*

## R&R Rollers

5	<b>R5-4034</b>	5-4034	Roller - Rear	0	
---	----------------	--------	---------------	---	--

## Overhaul Kits

6	<b>R100185</b>		Overhaul Kit - Roller	0	
---	----------------	--	-----------------------	---	--

*Detail Description: Includes 2 ea.: R253-117 Seals, R253-122 Seals, R254-78 Bearings, R254-79 Bearing Cups, R5-4038 Wear Sleeves; 1ea.: R32121-24 Roll Pin, R3296-15 Locknut, & R5-4040 Adjusting Nut:*

## Other Parts Available

7	<b>R253-121</b>	253-121	Seal - Oil Reel	0	
---	-----------------	---------	-----------------	---	--

8	<b>R5-3915</b>	5-3915	Sleeve - Wear Reel	0	
---	----------------	--------	--------------------	---	--

9	<b>R51-0880</b>	51-0880	Bedknife Screw Driver Tool	1	
---	-----------------	---------	----------------------------	---	--

*Detail Description: Easily install and remove bed knife screws with the help of a ratchet with 3/8" drive. Tool manufactured with hardened alloy steel.:*

10	<b>R150475</b>	3-6462	Screw - Bedknife Stainless 5/16-18 x 5/8	10	
----	----------------	--------	---	----	--

*Detail Description: Pre-Packaged in bags of 50:*

10	<b>R150476</b>	3-3816, 3-6462, 57-4910	Screw - Bedknife 5/16-18 x 5/8	10	
----	----------------	-------------------------------	-----------------------------------	----	--

11	<b>R5-4041</b>	5-4041	Shaft - Roller	1	
----	----------------	--------	----------------	---	--

12	<b>R29-3803</b>		Tube - 2 7/8 OD x 27 1/8	1	
----	-----------------	--	--------------------------	---	--

13	<b>R5-4035</b>	5-4035, Apr-59	Roller End - 2-7/8 OD	2	
----	----------------	-------------------	-----------------------	---	--

All original equipment manufacturers names and part numbers are used for identification purposes only, and we are in no way implying that our products are original equipment parts. Prices subject to change without notice.



# Replaces Toro Super Pro Parts

Cutting Unit  
Reel & Bedknife



Item No	R&R Part No.	OEM Part No.	Description	Qty Req	Order Quantity
14	R3296-15	116-7306, 32118-5, 32127-23, 32127-47, 3296-15	Locknut - 3/4-16 Nylon Jam	1	
15	R253-122	253-122, 30-0640	Seal	2	
16	R254-79	01-103-0060, 01-103-0130, 1-633584, 252-106, 254-79, 32-7800, 32-9590	Cup - Bearing	2	
<i>Detail Description: Use R254-79M installation mandrel to properly install race.:</i>					
17	R254-78	01-102-0060, 01-102-0130, 1-633585, 254-78, 32-7790, 32-9580, 93-4813	Tapered Bearing Cone	2	
18	R253-117	253-117, 253-165	Seal - Outer Triple Lip	2	
19	R5-4038	5-4038, 51-2420	Sleeve - Wear Reel Shaft	2	
20	R5-4040	5-4040	Nut - Adjusting Roller	1	
21	R32121-24	29-110-C, 29-110-D, 32121-24, 37-0800	Pin - Sp Roll 1/4 x 1	1	
22	R5204111		Gasket - Cover Ignition Pts	1	
23	RT3T		Tuneup Kit - (Fits 14HP GM3)	1	
<i>Detail Description: Includes 1 ea: R230722 Condensor, RFG-2770 Point Set, RN3212 NGK Plug:</i>					
24	RFG-2770		Point Set	1	

All original equipment manufacturers names and part numbers are used for identification purposes only, and we are in no way implying that our products are original equipment parts. Prices subject to change without notice.



# Replaces Toro Super Pro Parts

Cutting Unit  
Reel & Bedknife



Item No	R&R Part No.	OEM Part No.	Description	Qty Req	Order Quantity
25	<b>R230722</b>		Condensor	1	
26	<b>RN3212</b>		NGK Spark Plug - B-6L	1	
<i>Detail Description: Replaces Champion H8C:</i>					
27	<b>R5-2186</b>	5-2186, May-83	Bearing - Reel	2	
28	<b>R27-2360</b>	27-2360	Switch - Key 6 Lead 9/16 Mount	1	
29	<b>R6-1600</b>	6-1600	Solenoid - Starter	1	
30	<b>R302-5</b>	21-6010, 302-11, 302-37, 302-47, 302-5, 302-57, 302-58, 302-6, 31-0300, 32-9660, 60-0800, 62-3880, 92-4181	Fitting - Grease	2	
31	<b>R38-7330</b>	38-7330	Shield - Grass	0	

All original equipment manufacturers names and part numbers are used for identification purposes only, and we are in no way implying that our products are original equipment parts. Prices subject to change without notice.