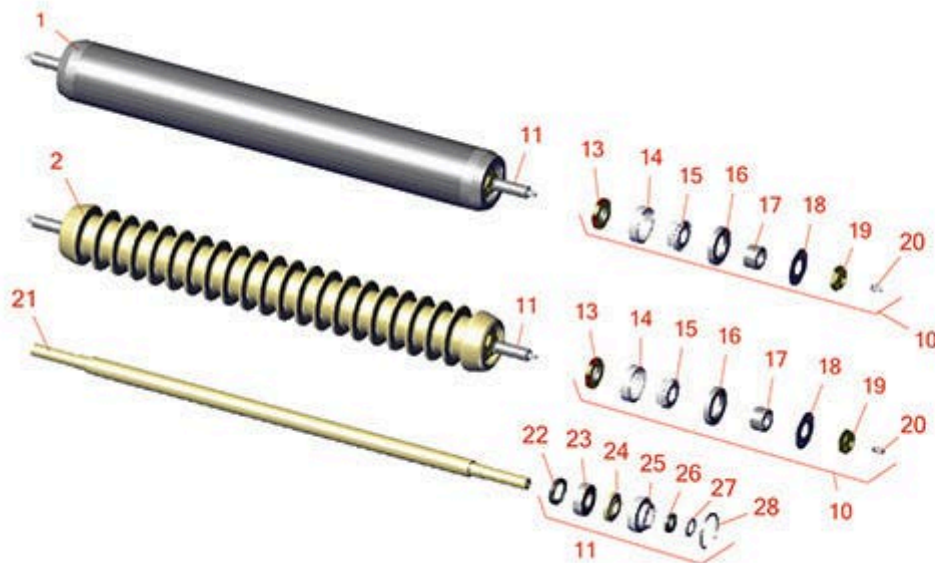




# Replaces Toro Reelmaster 6700D Parts

Cutting Unit - Models 03860, 03861 & 03862  
Rollers



All original equipment manufacturers names and part numbers are used for identification purposes only, and we are in no way implying that our products are original equipment parts. Prices subject to change without notice.



# Replaces Toro Reelmaster 6700D Parts

Cutting Unit - Models 03860, 03861 & 03862  
Rollers



Item No	R&R Part No.	OEM Part No.	Description	Qty Req	Order Quantity
---------	--------------	--------------	-------------	---------	----------------

## R&R Rollers

1	<b>R150728</b>	99-5749	Roller - Smooth Heavy Duty Tubular Steel	0	
---	----------------	---------	--	---	--

*Detail Description: Constructed with a through shaft, this heavy duty roller uses tapered bearings for extended life. Shaft length measures 26-3/4".:*

2	<b>R150730</b>	100-9906	Roller - Grooved Cast Steel	0	
---	----------------	----------	-----------------------------	---	--

*Detail Description: Constructed with cast steel body and a through shaft. This heavy duty roller uses tapered roller bearings for extended life. Shaft length measures 26-3/4".:*

## Overhaul Kits

10	<b>R100141</b>	100141	Overhaul Kit - Roller	1	
----	----------------	--------	-----------------------	---	--

*Detail Description: Includes 2 ea: R253-117 Seals, R253-152 Seals, R254-78 Bearings, R254-79 Cups, R302-5 Grease Fittings, R3296-15 Locknuts, R5-4038 Wear Sleeves, R150504 Washers:*

11	<b>R106-9606</b>	106-9606	Overhaul Kit - Roller	1	
----	------------------	----------	-----------------------	---	--

*Detail Description: Include 2 ea: R343667 Bearings, R253-70 Seals, R32120-62 Retaining Rings, R93-1251 Seals, R93-1252 Seals, R93-2931 Washers, R93-3007 Seals:*

## Other Parts Available

11	<b>R150729</b>		Shaft - Roller	1	
----	----------------	--	----------------	---	--

13	<b>R253-152</b>	253-116, 253-152	Seal - Inner Roller	2	
----	-----------------	---------------------	---------------------	---	--

14	<b>R254-79</b>	01-103-0060, 01-103-0130, 1-633584, 252-106, 254-79, 32-7800, 32-9590	Cup - Bearing	2	
----	----------------	---	---------------	---	--

*Detail Description: Use R254-79M installation mandrel to properly install race.:*

All original equipment manufacturers names and part numbers are used for identification purposes only, and we are in no way implying that our products are original equipment parts. Prices subject to change without notice.



## Replaces Toro Reelmaster 6700D Parts

Cutting Unit - Models 03860, 03861 & 03862  
Rollers



Item No	R&R Part No.	OEM Part No.	Description	Qty Req	Order Quantity
15	R254-78	01-102-0060, 01-102-0130, 1-633585, 254-78, 32-7790, 32-9580, 93-4813	Tapered Bearing Cone	2	
16	R253-117	253-117, 253-165	Seal - Outer Triple Lip	2	
17	R5-4038	5-4038, 51-2420	Sleeve - Wear Reel Shaft	2	
18	R150504	66-5620	Washer	2	
19	R3296-15	116-7306, 32118-5, 32127-23, 32127-47, 3296-15	Locknut - 3/4-16 Nylon Jam	5	
20	R302-5	21-6010, 302-11, 302-37, 302-47, 302-5, 302-57, 302-58, 302-6, 31-0300, 32-9660, 60-0800, 62-3880, 92-4181	Fitting - Grease	2	
21	R99-5748	99-5748	Shaft - Roller	1	
22	R93-3007	93-3007	Seal	2	
23	R343667	109966, 251-6, 38-7820	Bearing - Ball	2	
24	R93-1251	93-1251	Seal	2	

All original equipment manufacturers names and part numbers are used for identification purposes only, and we are in no way implying that our products are original equipment parts. Prices subject to change without notice.



## Replaces Toro Reelmaster 6700D Parts

*Cutting Unit - Models 03860, 03861 & 03862  
Rollers*



Item No	R&R Part No.	OEM Part No.	Description	Qty Req	Order Quantity
25	<b>R93-1252</b>	93-1252	Seal - Outer	2	
26	<b>R253-70</b>	253-70	Seal	2	
27	<b>R93-2931</b>	93-2931	Washer - Roller Seal	2	
28	<b>R32120-62</b>	32120-62	Ring - Retaining	2	

All original equipment manufacturers names and part numbers are used for identification purposes only, and we are in no way implying that our products are original equipment parts. Prices subject to change without notice.