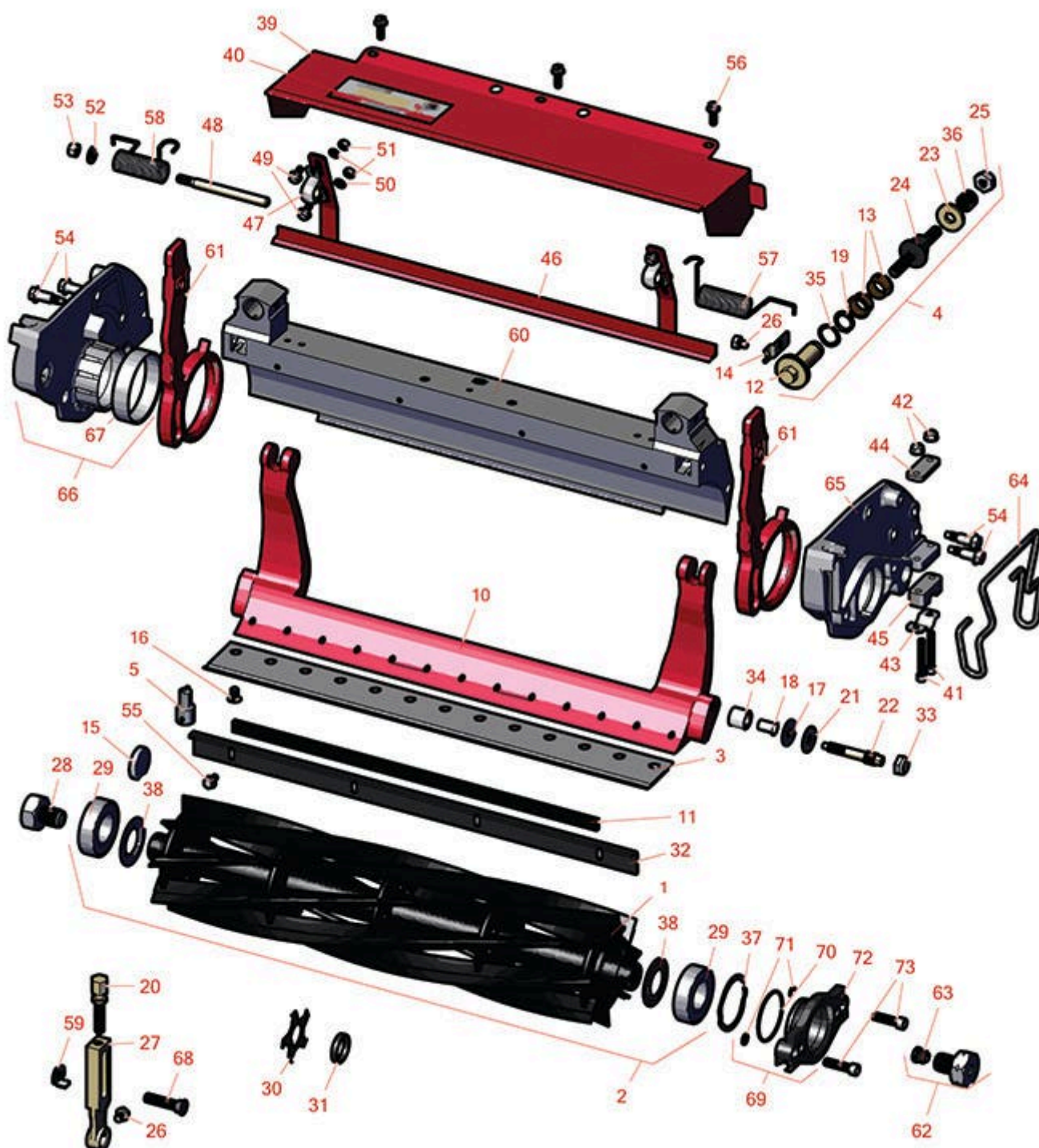




Replaces Toro Greensmaster TriFlex 3420 Parts

DPA Cutting Unit - Models 04651, 04653 & 04655
Reel & Bedknife



All original equipment manufacturers names and part numbers are used for identification purposes only, and we are in no way implying that our products are original equipment parts. Prices subject to change without notice.



Replaces Toro Greensmaster TriFlex 3420 Parts

DPA Cutting Unit - Models 04651, 04653 & 04655
Reel & Bedknife



Item No	R&R Part No.	OEM Part No.	Description	Qty Req	Order Quantity
---------	--------------	--------------	-------------	---------	----------------

R&R Reels, Lifetime Guaranteed

1	R119-4103	119-4103	Reel - 8 Blade	1
---	------------------	----------	----------------	---

Detail Description: R&R Reel blades are manufactured from high carbon-boron alloy steel and then hardened to RC46-49 to match the temper of our bedknives and original equipment bedknives. All R&R Reels are cylindrically ground on bearing surfaces and then relief ground. Reels are then precision computer balanced for extended bearing and reel life. R&R Products Reels are guaranteed against defects in material and workmanship for the life of the reel under normal use.:

1	R127-2200	127-2200	Reel - 8 Blade Low Drag	1
---	------------------	----------	-------------------------	---

Tech Note: Low Drag:

Detail Description: R&R Reel blades are manufactured from high carbon-boron alloy steel and then hardened to RC46-49 to match the temper of our bedknives and original equipment bedknives. All R&R Reels are cylindrically ground on bearing surfaces and then relief ground. Reels are then precision computer balanced for extended bearing and reel life. R&R Products Reels are guaranteed against defects in material and workmanship for the life of the reel under normal use.:

1	R119-4104	119-4104	Reel - 11 Blade	1
---	------------------	----------	-----------------	---

Detail Description: R&R Reel blades are manufactured from high carbon-boron alloy steel and then hardened to RC46-49 to match the temper of our bedknives and original equipment bedknives. All R&R Reels are cylindrically ground on bearing surfaces and then relief ground. Reels are then precision computer balanced for extended bearing and reel life. R&R Products Reels are guaranteed against defects in material and workmanship for the life of the reel under normal use.:

1	R127-2201	127-2201	Reel - 11 Blade Low Drag	1
---	------------------	----------	--------------------------	---

Tech Note: Low Drag:

Detail Description: R&R Reel blades are manufactured from high carbon-boron alloy steel and then hardened to RC46-49 to match the temper of our bedknives and original equipment bedknives. All R&R Reels are cylindrically ground on bearing surfaces and then relief ground. Reels are then precision computer balanced for extended bearing and reel life. R&R Products Reels are guaranteed against defects in material and workmanship for the life of the reel under normal use.:

1	R119-4105	119-4105	Reel - 14 Blade	1
---	------------------	----------	-----------------	---

All original equipment manufacturers names and part numbers are used for identification purposes only, and we are in no way implying that our products are original equipment parts. Prices subject to change without notice.



Replaces Toro Greensmaster TriFlex 3420 Parts

DPA Cutting Unit - Models 04651, 04653 & 04655
Reel & Bedknife



Item No	R&R Part No.	OEM Part No.	Description	Qty Req	Order Quantity
---------	--------------	--------------	-------------	---------	----------------

Detail Description: R&R Reel blades are manufactured from high carbon-boron alloy steel and then hardened to RC46-49 to match the temper of our bedknives and original equipment bedknives. All R&R Reels are cylindrically ground on bearing surfaces and then relief ground. Reels are then precision computer balanced for extended bearing and reel life. R&R Products Reels are guaranteed against defects in material and workmanship for the life of the reel under normal use.:

1	R127-2202	127-2202	Reel - 14 Blade Low Drag 21	1
---	------------------	----------	-----------------------------	---

Tech Note: Low Drag:

Detail Description: R&R Reel blades are manufactured from high carbon-boron alloy steel and then hardened to RC46-49 to match the temper of our bedknives and original equipment bedknives. All R&R Reels are cylindrically ground on bearing surfaces and then relief ground. Reels are then precision computer balanced for extended bearing and reel life. R&R Products Reels are guaranteed against defects in material and workmanship for the life of the reel under normal use.:

R&R Razor Reels, Lifetime Guaranteed

2	R132-7340	132-7340	Reel - 8 Blade Razor Series Low Drag	1
---	------------------	----------	---	---

Detail Description: R&R Razor Reels are manufactured from a special high alloy steel and then hardened to RC48-51 to match the temper of our Razor bedknives and original equipment premium series bedknives. All R&R Reels are cylindrically ground on bearing surfaces, relief ground and precision computer balanced for extended bearing and reel life. R&R Products Reels are guaranteed against defects in material and workmanship for the life of the reel under normal use. You can expect up to double the life from Razor reels over standard reels.:

2	R137-8511	137-8511	Reel - 8 Blade Razor Series w/Bearings and Seals 21x5	1
---	------------------	----------	--	---

Detail Description: R&R Razor Reels are manufactured from a special high alloy steel and then hardened to RC48-51 to match the temper of our Razor bedknives and original equipment premium series bedknives. All R&R Reels are cylindrically ground on bearing surfaces, relief ground and precision computer balanced for extended bearing and reel life. R&R Products Reels are guaranteed against defects in material and workmanship for the life of the reel under normal use. You can expect up to double the life from Razor reels over standard reels.:

2	R132-7341	132-7341	Reel - 11 Blade Razor Series Low Drag 21	1
---	------------------	----------	---	---

All original equipment manufacturers names and part numbers are used for identification purposes only, and we are in no way implying that our products are original equipment parts. Prices subject to change without notice.



Replaces Toro Greensmaster TriFlex 3420 Parts

DPA Cutting Unit - Models 04651, 04653 & 04655
Reel & Bedknife



Item No	R&R Part No.	OEM Part No.	Description	Qty Req	Order Quantity
---------	--------------	--------------	-------------	---------	----------------

Detail Description: R&R Razor Reels are manufactured from a special high alloy steel and then hardened to RC48-51 to match the temper of our Razor bedknives and original equipment premium series bedknives. All R&R Reels are cylindrically ground on bearing surfaces, relief ground and precision computer balanced for extended bearing and reel life. R&R Products Reels are guaranteed against defects in material and workmanship for the life of the reel under normal use. You can expect up to double the life from Razor reels over standard reels.:

2	R137-8512	137-8512	Reel - 11 Blade Razor Series w/Bearings and Seals 21x5	1	
---	------------------	----------	---	---	--

Detail Description: R&R Razor Reels are manufactured from a special high alloy steel and then hardened to RC48-51 to match the temper of our Razor bedknives and original equipment premium series bedknives. All R&R Reels are cylindrically ground on bearing surfaces, relief ground and precision computer balanced for extended bearing and reel life. R&R Products Reels are guaranteed against defects in material and workmanship for the life of the reel under normal use. You can expect up to double the life from Razor reels over standard reels.:

2	R132-7342	132-7342	Reel - 14 Blade Razor Series Low Drag 21	1	
---	------------------	----------	---	---	--

Detail Description: R&R Razor Reels are manufactured from a special high alloy steel and then hardened to RC48-51 to match the temper of our Razor bedknives and original equipment premium series bedknives. All R&R Reels are cylindrically ground on bearing surfaces, relief ground and precision computer balanced for extended bearing and reel life. R&R Products Reels are guaranteed against defects in material and workmanship for the life of the reel under normal use. You can expect up to double the life from Razor reels over standard reels.:

2	R137-8513	137-8513	Reel - 14 Blade Razor Series w/Bearings and Seals 21x5	1	
---	------------------	----------	---	---	--

Detail Description: R&R Razor Reels are manufactured from a special high alloy steel and then hardened to RC48-51 to match the temper of our Razor bedknives and original equipment premium series bedknives. All R&R Reels are cylindrically ground on bearing surfaces, relief ground and precision computer balanced for extended bearing and reel life. R&R Products Reels are guaranteed against defects in material and workmanship for the life of the reel under normal use. You can expect up to double the life from Razor reels over standard reels.:

R&R Bedknife, Lifetime Guaranteed

3	R108-4302	108-4301, 108-4302	Bedknife - Tournament Cut Extended .125 - .500 HOC	1	
---	------------------	-----------------------	---	---	--

All original equipment manufacturers names and part numbers are used for identification purposes only, and we are in no way implying that our products are original equipment parts. Prices subject to change without notice.



Replaces Toro Greensmaster TriFlex 3420 Parts

DPA Cutting Unit - Models 04651, 04653 & 04655
Reel & Bedknife



Item No	R&R Part No.	OEM Part No.	Description	Qty Req	Order Quantity
---------	--------------	--------------	-------------	---------	----------------

Detail Description: R&R Bedknives are manufactured from high carbon-boron alloy steel and then hardened to RC46-49 to match the temper of our reel blades and original equipment reels. Bedknives are surface ground on the top and front edge and straightened three times before being packaged with oil for rust prevention. All R&R Bedknives now have an increased front edge grind for added life. All R&R Bedknives are guaranteed against defects in material and workmanship under normal use for the life of the part.:

3	R108-4303	104-7720, 108-4303	Bedknife - Micro Cut Extended .062 - .187 HOC	1	
---	------------------	-----------------------	--	---	--

Detail Description: R&R Bedknives are manufactured from high carbon-boron alloy steel and then hardened to RC46-49 to match the temper of our reel blades and original equipment reels. Bedknives are surface ground on the top and front edge and straightened three times before being packaged with oil for rust prevention. All R&R Bedknives now have an increased front edge grind for added life. All R&R Bedknives are guaranteed against defects in material and workmanship under normal use for the life of the part.:

3	R150466	63-8600, 64-6393, 94-6393	Bedknife - Super Thick .312 - 1.00 HOC	1	
---	----------------	---------------------------------	---	---	--

Detail Description: R&R Bedknives are manufactured from high carbon-boron alloy steel and then hardened to RC46-49 to match the temper of our reel blades and original equipment reels. Bedknives are surface ground on the top and front edge and straightened three times before being packaged with oil for rust prevention. All R&R Bedknives now have an increased front edge grind for added life. All R&R Bedknives are guaranteed against defects in material and workmanship under normal use for the life of the part.:

3	R93-4262	65-8250, 93-4262, 93-4263	Bedknife - Micro Cut .062 - .187 HOC	1	
---	-----------------	---------------------------------	---	---	--

Detail Description: R&R Bedknives are manufactured from high carbon-boron alloy steel and then hardened to RC46-49 to match the temper of our reel blades and original equipment reels. Bedknives are surface ground on the top and front edge and straightened three times before being packaged with oil for rust prevention. All R&R Bedknives now have an increased front edge grind for added life. All R&R Bedknives are guaranteed against defects in material and workmanship under normal use for the life of the part.:

3	R93-4264	57-4960, 63-8470, 93-4264	Bedknife - Low Cut .187 - 1.00 HOC	1	
---	-----------------	---------------------------------	---------------------------------------	---	--

All original equipment manufacturers names and part numbers are used for identification purposes only, and we are in no way implying that our products are original equipment parts. Prices subject to change without notice.



Replaces Toro Greensmaster TriFlex 3420 Parts

DPA Cutting Unit - Models 04651, 04653 & 04655
Reel & Bedknife



Item No	R&R Part No.	OEM Part No.	Description	Qty Req	Order Quantity
---------	--------------	--------------	-------------	---------	----------------

Detail Description: R&R Bedknives are manufactured from high carbon-boron alloy steel and then hardened to RC46-49 to match the temper of our reel blades and original equipment reels. Bedknives are surface ground on the top and front edge and straightened three times before being packaged with oil for rust prevention. All R&R Bedknives now have an increased front edge grind for added life. All R&R Bedknives are guaranteed against defects in material and workmanship under normal use for the life of the part.:

3	R93-4263	63-8560, 66-9320, 93-4263, 93-6039	Bedknife - Tournament Cut .125 - .500 HOC	1	
---	-----------------	---	--	---	--

Detail Description: R&R Bedknives are manufactured from high carbon-boron alloy steel and then hardened to RC46-49 to match the temper of our reel blades and original equipment reels. Bedknives are surface ground on the top and front edge and straightened three times before being packaged with oil for rust prevention. All R&R Bedknives now have an increased front edge grind for added life. All R&R Bedknives are guaranteed against defects in material and workmanship under normal use for the life of the part.:

3	R94-6392	62-2500, 94-6392	Bedknife - High Cut .312 - 1.00 HOC	1	
---	-----------------	---------------------	--	---	--

Detail Description: R&R Bedknives are manufactured from high carbon-boron alloy steel and then hardened to RC46-49 to match the temper of our reel blades and original equipment reels. Bedknives are surface ground on the top and front edge and straightened three times before being packaged with oil for rust prevention. All R&R Bedknives now have an increased front edge grind for added life. All R&R Bedknives are guaranteed against defects in material and workmanship under normal use for the life of the part.:

3	R63-8610	63-8610	Bedknife - Fairway Cut .375 - 1.00 HOC	1	
---	-----------------	---------	---	---	--

Detail Description: R&R Bedknives are manufactured from high carbon-boron alloy steel and then hardened to RC46-49 to match the temper of our reel blades and original equipment reels. Bedknives are surface ground on the top and front edge and straightened three times before being packaged with oil for rust prevention. All R&R Bedknives now have an increased front edge grind for added life. All R&R Bedknives are guaranteed against defects in material and workmanship under normal use for the life of the part.:

3	R94-6396	10-4900, 54-9150, 94-6396, Oct-00	Bedknife - High Cut 5/16"-1" HOC	1	
---	-----------------	--	-------------------------------------	---	--

All original equipment manufacturers names and part numbers are used for identification purposes only, and we are in no way implying that our products are original equipment parts. Prices subject to change without notice.



Replaces Toro Greensmaster TriFlex

3420 Parts

DPA Cutting Unit - Models 04651, 04653 & 04655
Reel & Bedknife



Item No	R&R Part No.	OEM Part No.	Description	Qty Req	Order Quantity
---------	--------------	--------------	-------------	---------	----------------

Detail Description: R&R Bedknives are manufactured from high carbon-boron alloy steel and then hardened to RC46-49 to match the temper of our reel blades and original equipment reels. Bedknives are surface ground on the top and front edge and straightened three times before being packaged with oil for rust prevention. All R&R Bedknives now have an increased front edge grind for added life. All R&R Bedknives are guaranteed against defects in material and workmanship under normal use for the life of the part.:

3	R150462	63-8610, 94-6396	Bedknife - 7 Hole Thick 5/16	1	
---	----------------	---------------------	------------------------------	---	--

Detail Description: R&R Bedknives are manufactured from high carbon-boron alloy steel and then hardened to RC46-49 to match the temper of our reel blades and original equipment reels. Bedknives are surface ground on the top and front edge and straightened three times before being packaged with oil for rust prevention. All R&R Bedknives now have an increased front edge grind for added life. All R&R Bedknives are guaranteed against defects in material and workmanship under normal use for the life of the part.:

R&R Razor Tool Steel Bedknives, Lifetime Guaranteed

3	R115-1881	115-1881	Bedknife - Razor Tool Steel - 21 Tournament Cut .125 - .500 HOC	1	
---	------------------	----------	---	---	--

Detail Description: R&R Razor bedknives are manufactured from premium alloy tool steel steel and then hardened to RC48-51 to match the temper of our Razor reel blades and original equipment premium series reels. Bedknives are surface ground on the top and front edge and specially packaged for rust prevention. All R&R Bedknives now have an increased front edge grind for added life. All R&R Bedknives are guaranteed against defects in material and workmanship under normal use for the life of the part. You can expect up to double the life over standard bedknives.:

3	R115-1880	115-1880	Bedknife - Razor Tool Steel - 21 Micro Cut .062 - .187 HOC	1	
---	------------------	----------	---	---	--

Detail Description: R&R Razor bedknives are manufactured from premium alloy tool steel steel and then hardened to RC48-51 to match the temper of our Razor reel blades and original equipment premium series reels. Bedknives are surface ground on the top and front edge and specially packaged for rust prevention. All R&R Bedknives now have an increased front edge grind for added life. All R&R Bedknives are guaranteed against defects in material and workmanship under normal use for the life of the part. You can expect up to double the life over standard bedknives.:

3	R150492	150492	Bedknife - Razor Tool Steel - 21 Micro Cut Ext	1	
---	----------------	--------	---	---	--

All original equipment manufacturers names and part numbers are used for identification purposes only, and we are in no way implying that our products are original equipment parts. Prices subject to change without notice.



Replaces Toro Greensmaster TriFlex 3420 Parts

DPA Cutting Unit - Models 04651, 04653 & 04655
Reel & Bedknife



Item No	R&R Part No.	OEM Part No.	Description	Qty Req	Order Quantity
---------	--------------	--------------	-------------	---------	----------------

Detail Description: R&R Razor bedknives are manufactured from premium alloy tool steel steel and then hardened to RC48-51 to match the temper of our Razor reel blades and original equipment premium series reels. Bedknives are surface ground on the top and front edge and specially packaged for rust prevention. All R&R Bedknives now have an increased front edge grind for added life. All R&R Bedknives are guaranteed against defects in material and workmanship under normal use for the life of the part. You can expect up to double the life over standard bedknives.:

3	R112-7475	112-7475	Bedknife - Razor Tool Steel - 22 x 3/8 Fairway	1	
---	------------------	----------	---	---	--

Detail Description: R&R Razor bedknives are manufactured from premium alloy tool steel steel and then hardened to RC48-51 to match the temper of our Razor reel blades and original equipment premium series reels. Bedknives are surface ground on the top and front edge and specially packaged for rust prevention. All R&R Bedknives now have an increased front edge grind for added life. All R&R Bedknives are guaranteed against defects in material and workmanship under normal use for the life of the part. You can expect up to double the life over standard bedknives.:

Overhaul Kit

4	R121-2637	121-2637	Overhaul Kit - DPA Adjusters	1	
---	------------------	----------	------------------------------	---	--

Service Tools

5	R51-0880	51-0880	Bedknife Screw Driver Tool	0	
---	-----------------	---------	----------------------------	---	--

Detail Description: Easily install and remove bed knife screws with the help of a ratchet with 3/8" drive. Tool manufactured with hardened alloy steel.:

Other Parts Available

10	R106-2648-01	106-2648-01	Bed Bar	1	
----	---------------------	-------------	---------	---	--

10	R99-3794-01	99-3794-01, 99-3794-03	Bed Bar - Aggressive	1	
----	--------------------	---------------------------	----------------------	---	--

11	R106-2619	106-2619	Seal - Strip	1	
----	------------------	----------	--------------	---	--

12	R106-5363	106-5363	Shaft - Adjusting - Bed Bar - Stainless	2	
----	------------------	----------	--	---	--

13	R106-5344	106-5344	Bushing - Flanged and Keyed	4	
----	------------------	----------	-----------------------------	---	--

14	R99-2097	99-2097	Detent - Bed Bar Adjuster	2	
----	-----------------	---------	---------------------------	---	--

All original equipment manufacturers names and part numbers are used for identification purposes only, and we are in no way implying that our products are original equipment parts. Prices subject to change without notice.



Replaces Toro Greensmaster TriFlex 3420 Parts

DPA Cutting Unit - Models 04651, 04653 & 04655
Reel & Bedknife



Item No	R&R Part No.	OEM Part No.	Description	Qty Req	Order Quantity
15	R105-5708	105-5708, 121-4609	Plug - Expansion	1	
16	R119-4151	119-4151	Screw - Bedknife 5/16-18 x 17/32	13	
17	R52-2900	52-2900	Washer - Nylon	4	
18	R52-2890	52-2890	Bushing - Flanged	2	
19	R32120-93	32120-93	Snap Ring - HD	2	
20	R110-7352	110-7352	Screw - HOC 2 5/8 Stainless	2	
<i>Tech Note: Ser# 313000001-315999999:</i>					
20	R132-4586	132-4586	Screw - HOC - Stainless	2	
<i>Tech Note: Ser#316000001-400527132:</i>					
21	R52-2860	119-4150, 52-2860	Washer - Bed Bar Pivot	4	
22	R117-9493	117-9493	Bolt - Bed Bar - Hardened	2	
23	R119-4155	119-4155	Washer - Hardened	2	
24	R115-7039	115-7039	Screw - Adjuster - Bedbar	2	
<i>Tech Note: Ser# 316000001-999999999:</i>					
24	R137-6130	137-6130	Screw - Adjuster - Hardened - Bedbar	2	
<i>Tech Note: Ser# 405700000-999999999:</i>					
25	R3296-48	119-4039, 32146-7, 3296-34, 3296-48	Locknut - 7/16-14 ESNA	2	
26	R114-9396	114-9396, 119-4067	Bolt - Hex HD 5/16-18 x 3/8	4	

All original equipment manufacturers names and part numbers are used for identification purposes only, and we are in no way implying that our products are original equipment parts. Prices subject to change without notice.



Replaces Toro Greensmaster TriFlex 3420 Parts

DPA Cutting Unit - Models 04651, 04653 & 04655
Reel & Bedknife



Item No	R&R Part No.	OEM Part No.	Description	Qty Req	Order Quantity
27	R115-7041	115-7041	Bracket - Front Roller 5 1/4 in	2	
28	R115-7263	115-7263	Bolt - Bearing Lock	1	
29	R115-3296	115-3296	Bearing	2	
<i>Tech Note: Ser# 316000001-999999999:</i>					
29	R140-5510	140-5510	Bearing - Sealed Stainless	2	
<i>Tech Note: Ser# 408000000-999999999:</i>					
30	R110-2343	110-2343	Groomer Blade - Carbide Tipped - Helix 1.5mm	42	
31	R70-1350	70-1350	Spacer - 1/4 Fits Groomer Shaft	82	
32	R115-3303-03	115-3303-03	Bar - Cutoff	1	
33	R3296-28	119-4154, 140-9234, 32127-34, 32128-7, 32128-8, 32136-7, 3296-28	Nut - 1/2-20 ESNA Jam	2	
34	R119-4153	119-4153	Bushing - Rubber	2	
35	R119-4164	119-4164	Washer - Wave	2	
36	R119-4156	119-4156	Spring - Compression	2	
37	R105-5700	105-5700, 115-5258	Wave Washer - Bearing	1	
38	R115-3299	115-3299	Seal- Flocked	2	
39	R119-4095	119-4095	Grass Shield Assy	1	
40	R354083	104-7729, 354083	Decal - Danger	1	

All original equipment manufacturers names and part numbers are used for identification purposes only, and we are in no way implying that our products are original equipment parts. Prices subject to change without notice.



Replaces Toro Greensmaster TriFlex 3420 Parts

DPA Cutting Unit - Models 04651, 04653 & 04655
Reel & Bedknife



Item No	R&R Part No.	OEM Part No.	Description	Qty Req	Order Quantity
<i>Tech Note: Ser# 316000001-999999999:</i>					
40	R137-9706	137-9706	Decal- Warning	1	
<i>Tech Note: Ser# 403460001-999999999:</i>					
41	R119-4035	119-4035	Bolt - 1/4-20 x 1 3/4 Soc HD Cap Scr	4	
42	R119-4040	119-4040	Nut - 1/4-20 Fl Locknut	4	
43	R105-5712	105-5712, 119-4157	Retainer - Roller	2	
44	R105-5711	105-5711, 119-4165	Shim - Roller	2	
45	R105-5710	105-5710, 119-4166	Spacer - Roller	2	
46	R106-9095-01	106-9095-01	Scraper - Assy	1	
47	R256-239	256-239	Bearing	2	
48	R106-9091	106-9091	Pin - Scraper	2	
49	R33113-016	33113-016, 48-7620	Bolt - Hex Washer M6-1.0 x 12	4	
50	R6050-103	48-8010, 48-8030	Washer - Flat	4	
51	R33023-00	33023-00, 48-7900, 49-7810	Locknut - ESNA 6mm x 1.0	4	
52	R33094-00	33094-00, 93-5914	Washer - Flat - 8mm Hardened	2	
53	R33024-00	33024-00	Locknut - 8mm x 1.25	2	
54	R115-7042	115-7042	Bolt-Shoulder, Flange	4	

All original equipment manufacturers names and part numbers are used for identification purposes only, and we are in no way implying that our products are original equipment parts. Prices subject to change without notice.



Replaces Toro Greensmaster TriFlex 3420 Parts

*DPA Cutting Unit - Models 04651, 04653 & 04655
Reel & Bedknife*



Item No	R&R Part No.	OEM Part No.	Description	Qty Req	Order Quantity
55	R131-6150	131-6150	Screw- 1/4-20 x 3/4 Hx Wh Thread Forming	4	
56	R119-4012	119-4012	Screw - Hx Washer HD Self Threading	3	
57	R106-9094	106-9094	Spring - LH - SS	1	
58	R106-9093	106-9093	Spring - RH - SS	1	
59	R104-2603	104-2603, 119-4158	Washer - HOC Bracket	2	
60	R119-9303	105-5799, 119-9303	Frame - Crossmember	1	
61	R119-9307-01	119-9307-01	Arm - Pitch	2	
62	R120-3221	120-3221	Reel Nut Assy - LH	1	
63	R120-3220	120-3220	Plug - Plastic	1	
64	R117-6706	117-6706	Clamp - Motor	1	
65	R119-4005	119-4005	Side Plate Assy-LH Incl R117-6619	1	
66	R119-4007	119-4007	Side Plate Assy-RH Incl R117-6619	1	
67	R117-6619	117-6619	Bushing	2	
68	R99-3773	99-3773	Bolt- Plow 3/8-16 x 1 3/4	2	
69	R115-5227	115-5227	Motor Adapter Assy	1	
70	R360-0398	360-0398	O-Ring	1	
71	R237-22	107-8844, 237-22, 237-78	O-Ring	2	
72	R115-3294	115-3294	Adaptor - Hyd Motor	1	

All original equipment manufacturers names and part numbers are used for identification purposes only, and we are in no way implying that our products are original equipment parts. Prices subject to change without notice.



Replaces Toro Greensmaster TriFlex 3420 Parts

*DPA Cutting Unit - Models 04651, 04653 & 04655
Reel & Bedknife*



Item No	R&R Part No.	OEM Part No.	Description	Qty Req	Order Quantity
73	R434036	3274-18	Screw - Soc HD 5/16-18 x 1-1/4	2	

All original equipment manufacturers names and part numbers are used for identification purposes only, and we are in no way implying that our products are original equipment parts. Prices subject to change without notice.