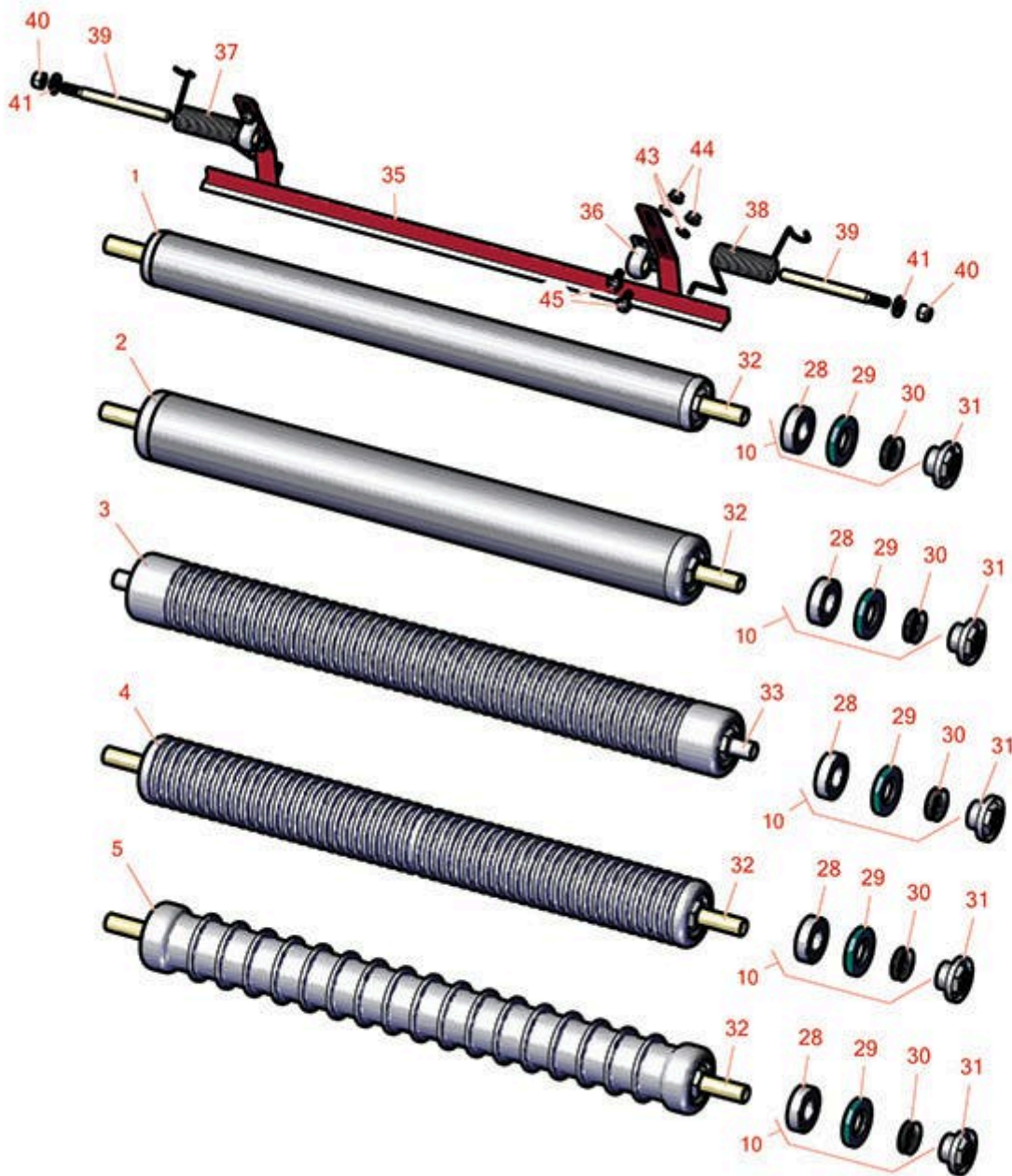




Replaces Toro Greensmaster TriFlex

3320 Parts

DPA Cutting Unit - Models 04613, 04614 & 04615
Rollers



All original equipment manufacturers names and part numbers are used for identification purposes only, and we are in no way implying that our products are original equipment parts. Prices subject to change without notice.



Replaces Toro Greensmaster TriFlex

3320 Parts

DPA Cutting Unit - Models 04613, 04614 & 04615
Rollers



| Item No | R&R Part No. | OEM Part No. | Description | Qty Req | Order Quantity |
|---------|--------------|--------------|-------------|---------|----------------|
|---------|--------------|--------------|-------------|---------|----------------|

Overhaul Kits and Service Tools

| | | | | | |
|----|------------------|----------|-----------------------|---|--|
| 10 | R107-1594 | 107-1594 | Overhaul Kit - Roller | 1 | |
|----|------------------|----------|-----------------------|---|--|

Detail Description: Includes 2 ea.: R106-6941 Seals, R106-6942 V-Rings & R251-347 Bearings:

Rollers

| | | | | | |
|---|------------------|---|---------------------------------|---|--|
| 1 | R140-5560 | 105-5776, 106-6945, 107-3509, 119-4093, 120-9595, 140-5560 | Roller - Smooth 2 in Steel Rear | 3 | |
|---|------------------|---|---------------------------------|---|--|

| | | | | | |
|---|------------------|-----------------------|---|---|--|
| 2 | R115-7388 | 115-7388, 140-5681 | Roller - Smooth Tubular Steel 2-1/2 in Dia | 3 | |
|---|------------------|-----------------------|---|---|--|

Detail Description: Constructed with a through shaft, this steel roller uses a through shaft and ball bearings.:

| | | | | | |
|---|------------------|----------|---------------------------------------|---|--|
| 3 | R121-4675 | 121-4675 | Roller - Extended Machined Grooved | 3 | |
|---|------------------|----------|---------------------------------------|---|--|

| | | | | | |
|---|------------------|----------|--|---|--|
| 4 | R115-7360 | 115-7360 | Roller - Narrow Grooved Machined Aluminum - 2 1/2 | 3 | |
|---|------------------|----------|--|---|--|

Detail Description: Constructed with a through shaft, this aluminum roller is machined with narrow grooves and uses ball bearings.:

| | | | | | |
|---|------------------|----------|---|---|--|
| 5 | R115-7386 | 115-7386 | Roller - Wide Grooved Machined Aluminum - 2-1/2 Dia | 3 | |
|---|------------------|----------|---|---|--|

Detail Description: Constructed with a through shaft, this aluminum roller is machined with 1-1/8" wide grooves for the least amount of ground contact and uses ball bearings.:

Other Parts Available

| | | | | | |
|----|-----------------|---------------------|----------------|---|--|
| 28 | R251-347 | 251-347, 72-5690 | Bearing - Ball | 2 | |
|----|-----------------|---------------------|----------------|---|--|

| | | | | | |
|----|------------------|----------|-------------------|---|--|
| 29 | R106-6941 | 106-6941 | Seal - Double Lip | 2 | |
|----|------------------|----------|-------------------|---|--|

All original equipment manufacturers names and part numbers are used for identification purposes only, and we are in no way implying that our products are original equipment parts. Prices subject to change without notice.



Replaces Toro Greensmaster TriFlex 3320 Parts

DPA Cutting Unit - Models 04613, 04614 & 04615
Rollers



| Item No | R&R Part No. | OEM Part No. | Description | Qty Req | Order Quantity |
|---------|--------------|---|-------------------------------|---------|----------------|
| 30 | R106-6942 | 106-6942 | V-Ring - Roller | 2 | |
| 31 | R114-3745 | 106-6939, 108-3151, 114-3745, 114-5411 | Locknut - Bearing - Stainless | 2 | |
| 32 | R119-4090 | 119-4090 | Shaft - Roller - Hardened | 1 | |
| 33 | R120-5404 | 120-5404 | Shaft- Roller | 1 | |
| 35 | R106-9095-01 | 106-9095-01 | Scraper - Assy | 3 | |
| 36 | R256-239 | 256-239 | Bearing | 6 | |
| 37 | R106-9093 | 106-9093 | Spring - RH - SS | 3 | |
| 38 | R106-9094 | 106-9094 | Spring - LH - SS | 3 | |
| 39 | R106-9091 | 106-9091 | Pin - Scraper | 6 | |
| 40 | R33024-00 | 33024-00 | Locknut - 8mm x 1.25 | 2 | |
| 41 | R33094-00 | 33094-00, 93-5914 | Washer - Flat - 8mm Hardened | 2 | |
| 43 | R24M7139 | 24M7139, 3256-16, 33093-00, 43-5930 | Washer - Flat 6mm | 12 | |
| 44 | R33003-00 | 33003-00, 65-7980 | Hex Nut - Flanged 6-1.0mm | 6 | |
| 45 | R33113-016 | 33113-016, 48-7620 | Bolt - Hex Washer M6-1.0 x 12 | 12 | |

All original equipment manufacturers names and part numbers are used for identification purposes only, and we are in no way implying that our products are original equipment parts. Prices subject to change without notice.