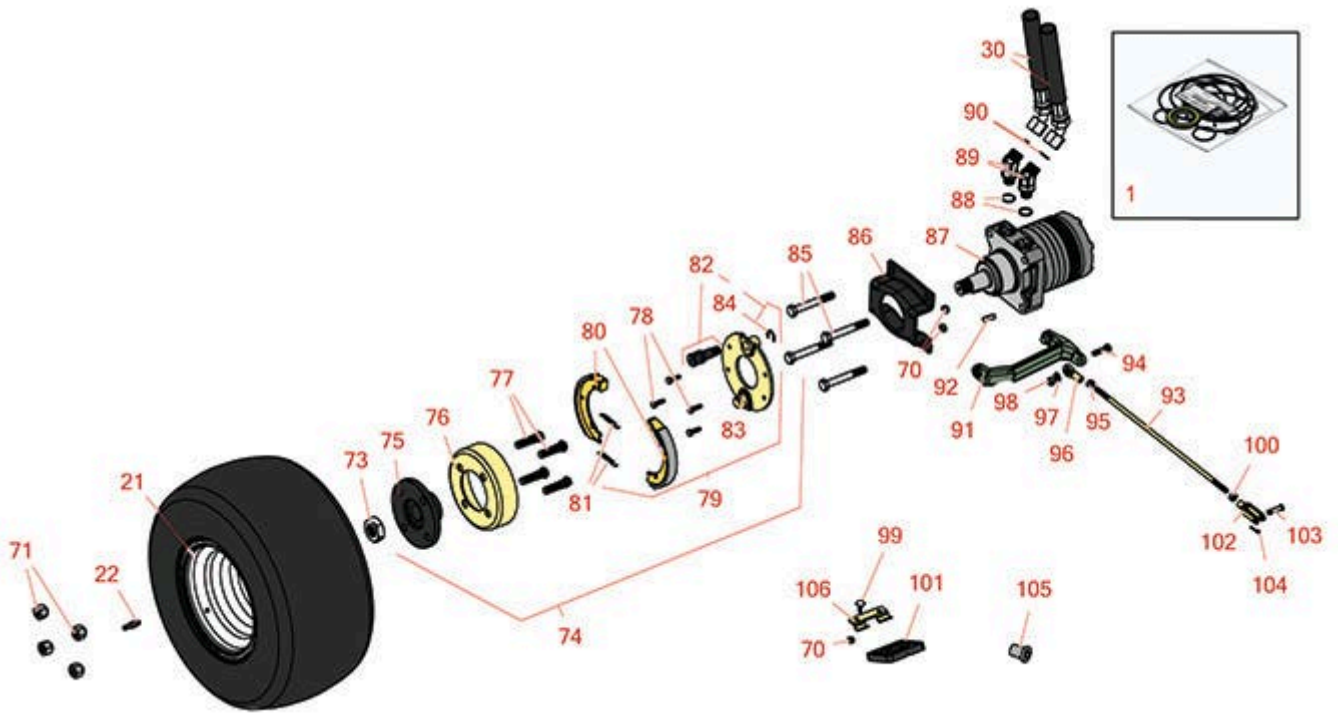




# Replaces Toro Greensmaster 3200 & 3200-D Parts

Traction Unit  
Front Wheel, Pedals & Steering



All original equipment manufacturers names and part numbers are used for identification purposes only, and we are in no way implying that our products are original equipment parts. Prices subject to change without notice.



# Replaces Toro Greensmaster 3200 & 3200-D Parts

Traction Unit  
Front Wheel, Pedals & Steering



Item No	R&R Part No.	OEM Part No.	Description	Qty Req	Order Quantity
<b>Overhaul Kit</b>					
1	<b>R76-0800</b>	100-6131, 76-0800, 94-8178	Seal Kit - Hyd Wheel Motor	1	
21	<b>R217-60</b>	217-60, 242-49	Wheel - with Valve Stem - White	3	
22	<b>R232-27</b>	232-27, 232-31	Stem - Valve w/ Cap	1	
22	<b>R232-24</b>	232-24, 232-35	Stem - Valve w/ Cap	2	
<b>Hoses</b>					
30	<b>R94-5357</b>	94-5357	Hydraulic Hose Assy	2	
30	<b>R94-5358</b>	94-5358	Hydraulic Hose Assy	2	
<b>Other Parts Available</b>					
70	<b>R33023-00</b>	33023-00, 48-7900, 49-7810	Locknut - ESNA 6mm x 1.0	10	
71	<b>R242-50</b>	242-50	Nut - 1/2-20 Wheel	8	
73	<b>R26-3790</b>	26-3790	Nut - Hex - Wheel Motor 1-20	2	
74	<b>R10-6821</b>	10-6820, 10-6821, Oct-20	Hub and Drum Assy	2	
75	<b>R10-6870-03</b>	10-6870, 10-6870-03, Oct-70	Hub - Wheel	2	
76	<b>R10-6850</b>	10-6850	Drum - Brake	2	
77	<b>R85-6540</b>	85-6540	Stud - Drive 1/2-20 x 2	8	

All original equipment manufacturers names and part numbers are used for identification purposes only, and we are in no way implying that our products are original equipment parts. Prices subject to change without notice.



# Replaces Toro Greensmaster 3200 & 3200-D Parts

*Traction Unit  
Front Wheel, Pedals & Steering*



Item No	R&R Part No.	OEM Part No.	Description	Qty Req	Order Quantity
78	<b>R321-5</b>	321-31, 321-5	Bolt - Hex HD 1/4-20 x 7/8	8	
79	<b>R71-1500</b>	104-7705, 71-1500	Brake Assy	4	
80	<b>R70-9840</b>	70-9840	Shoe - Brake	2	
81	<b>R70-9880</b>	70-9880	Spring - Brake Shoe	2	
81	<b>R70-9880S</b>		Spring - Brake Shoe - Stainless	2	
82	<b>R104-7707</b>	104-7707, 104-7708, 70-9850, 70-9860	Cam - Brake	2	
83	<b>R70-9870</b>	70-9870	Plate - Backing	1	
84	<b>R150223</b>		Clip - Retaining - Brake Cam	2	
84	<b>R150513</b>	104-7706	E - Clip - Brake Assy	2	
85	<b>R19M7819</b>		Bolt - Hex HD M12 x 90	8	
85	<b>R33116-060</b>	33116-060	Bolt - Hx HD M12 x 60	8	
86	<b>R84-2000-03</b>	84-2000, 84-2000-03	Bracket - Brake	2	
87	<b>R92-9199</b>	92-9199	Hydraulic Motor - RH/LH Wheel	2	
88	<b>R237-80</b>	237-80, 327-80	O-Ring	4	
89	<b>R340-14</b>	340-14, 96-0861	Hydraulic Fitting - 45 Deg	4	
90	<b>R237-65</b>	237-65, 237.65	O-Ring	4	
91	<b>R93-2096</b>	71-1510, 93-2096	Arm - Brake	2	

All original equipment manufacturers names and part numbers are used for identification purposes only, and we are in no way implying that our products are original equipment parts. Prices subject to change without notice.



# Replaces Toro Greensmaster 3200 & 3200-D Parts

*Traction Unit  
Front Wheel, Pedals & Steering*



Item No	R&R Part No.	OEM Part No.	Description	Qty Req	Order Quantity
92	<b>R3257-42</b>	3257-42	Key - Woodruff 5/16 x 1	2	
93	<b>R93-2069</b>	93-2069	Rod - Brake	2	
94	<b>R33114-030</b>	33114-030, 42-9520, 48-7730	Bolt - Hex HD M8-1.25 x 30	2	
95	<b>R3220-20</b>	3220-20	Nut - Jam - 5/16-24 LH	2	
96	<b>R93-2070</b>	93-2070	Bearing - Rod End	2	
97	<b>R453009</b>	01-166-0400, 24-10-BD, 24-9-AD, 32-9650, 3256-2, 3256-23, 3256-3, 3256-67, 3290-217, 3556-3, 4-2390, 7-0152	Washer - Flat 5/16 SAE	2	
98	<b>R33024-00</b>	33024-00	Locknut - 8mm x 1.25	2	
99	<b>R33123-016</b>	33123-016, 33123-020	Bolt - Carriage M6 x 20	2	
100	<b>R3220-2</b>	01-191-0524, 3220-2	Nut - Jam - 5/16-24	2	
101	<b>R93-7629</b>	27-7570, 27-7580, 49-6170, 93-7629, 93-8743	Rubber Foot Pad - Brake	1	
102	<b>R282-2</b>	1-303105, 282-2	Yoke	2	

All original equipment manufacturers names and part numbers are used for identification purposes only, and we are in no way implying that our products are original equipment parts. Prices subject to change without notice.



# Replaces Toro Greensmaster 3200 & 3200-D Parts

*Traction Unit  
Front Wheel, Pedals & Steering*



Item No	R&R Part No.	OEM Part No.	Description	Qty Req	Order Quantity
103	<b>R283-61</b>	283-61, 86-2140, N/A, R3296-12	Pin - Clevis 5/16 x 1-1/8	2	
104	<b>R1023-4</b>	01-151-0150, 1023-4, 19-6220, 214-14, 215-54, 28-9-D, 3272-4, 3272-6, 513567, 932008P	Pin - Cotter 3/32 x 3/4	2	
105	<b>R83-1700</b>	83-1700	Bushing - Flanged - Plastic	3	
106	<b>R95-1629</b>	95-1629	Hinge-Lower	1	

All original equipment manufacturers names and part numbers are used for identification purposes only, and we are in no way implying that our products are original equipment parts. Prices subject to change without notice.