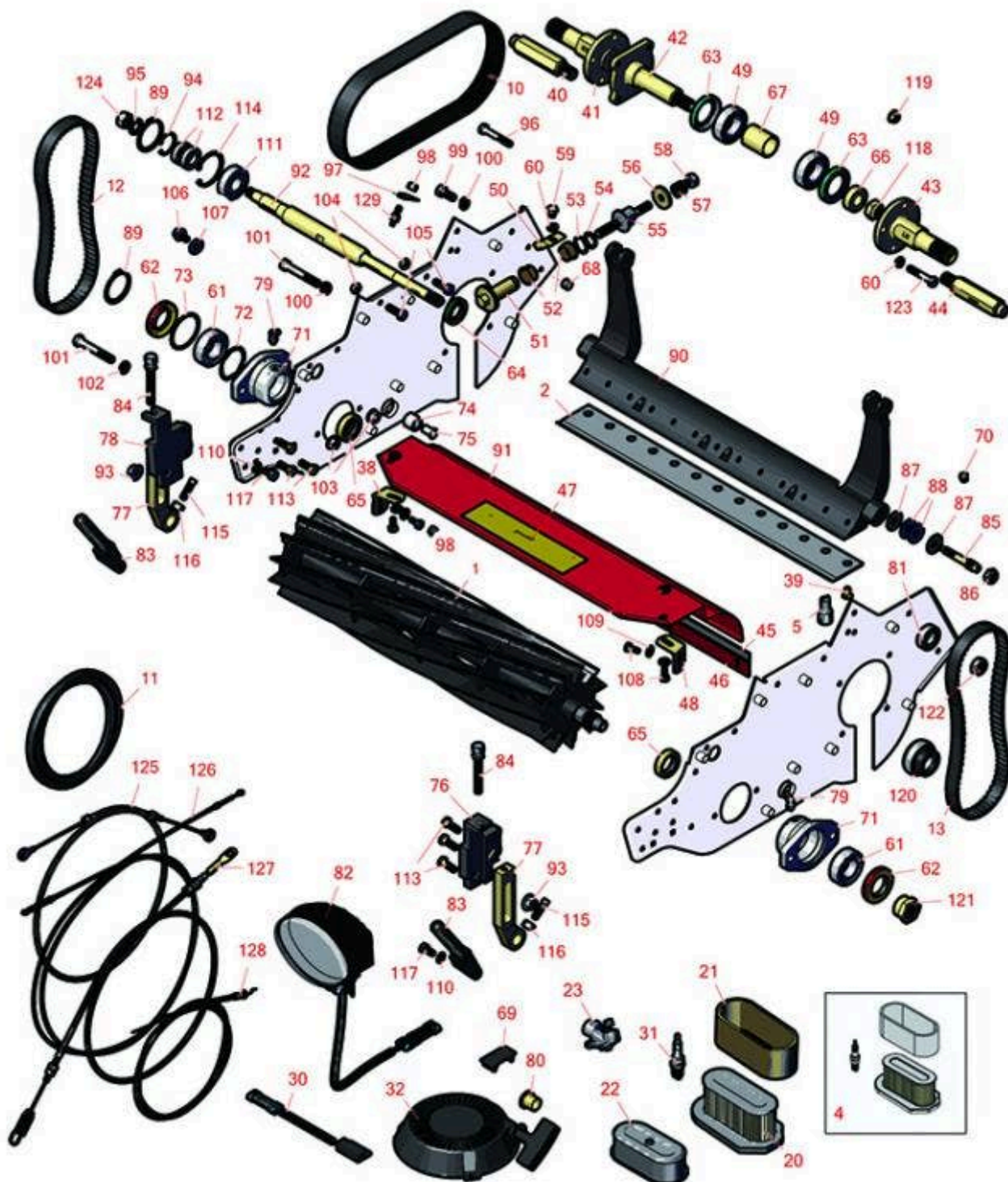




# Replaces Toro Greensmaster 1010 Parts

Mower - Model 04038

Reel & Bedknife



All original equipment manufacturers names and part numbers are used for identification purposes only, and we are in no way implying that our products are original equipment parts. Prices subject to change without notice.



# Replaces Toro Greensmaster 1010 Parts

Mower - Model 04038

Reel & Bedknife



Item No	R&R Part No.	OEM Part No.	Description	Qty Req	Order Quantity
---------	--------------	--------------	-------------	---------	----------------

## R&R Reels, Lifetime Guaranteed

1	<b>R92-9672</b>	92-9672, 93-6087	Reel - 8 Blade	0	
---	-----------------	---------------------	----------------	---	--

*Detail Description: R&R Reel blades are expertly crafted from premium high carbon-boron alloy steel, heat-treated to perfectly complement both R&R and OEM bedknives. Each reel undergoes precision cylindrical grinding on bearing surfaces, followed by relief grinding for optimal performance. Advanced computer balancing ensures extended reel and bearing life. Backed by our lifetime guarantee against defects in materials and craftsmanship under normal use, R&R Reels deliver unmatched durability and cutting precision you can trust.:*

1	<b>R13-8519</b>	13-8519, 14-0839, 65-8200, 92-8653, 93-6097	Reel - 11 Blade	1	
---	-----------------	---	-----------------	---	--

*Detail Description: R&R Reel blades are expertly crafted from premium high carbon-boron alloy steel, heat-treated to perfectly complement both R&R and OEM bedknives. Each reel undergoes precision cylindrical grinding on bearing surfaces, followed by relief grinding for optimal performance. Advanced computer balancing ensures extended reel and bearing life. Backed by our lifetime guarantee against defects in materials and craftsmanship under normal use, R&R Reels deliver unmatched durability and cutting precision you can trust.:*

1	<b>R150755</b>	117-1449	Reel - 14 Blade	1	
---	----------------	----------	-----------------	---	--

*Detail Description: R&R Reel blades are expertly crafted from premium high carbon-boron alloy steel, heat-treated to perfectly complement both R&R and OEM bedknives. Each reel undergoes precision cylindrical grinding on bearing surfaces, followed by relief grinding for optimal performance. Advanced computer balancing ensures extended reel and bearing life. Backed by our lifetime guarantee against defects in materials and craftsmanship under normal use, R&R Reels deliver unmatched durability and cutting precision you can trust.:*

## R&R Bedknives, Lifetime Guaranteed

2	<b>R93-4262</b>	65-8250, 93-4262, 93-4263	Bedknife - Micro Cut .062 - .187 HOC	1	
---	-----------------	---------------------------------	---	---	--

*Detail Description: R&R Bedknives are manufactured from high carbon-boron alloy steel and then hardened to RC46-49 to match the temper of our reel blades and original equipment reels. Bedknives are surface ground on the top and front edge and straightened three times before being packaged with oil for rust prevention. All R&R Bedknives now have an increased front edge grind for added life. All R&R Bedknives are guaranteed against defects in material and workmanship under normal use for the life of the part.:*

All original equipment manufacturers names and part numbers are used for identification purposes only, and we are in no way implying that our products are original equipment parts. Prices subject to change without notice.



## Replaces Toro Greensmaster 1010 Parts

Mower - Model 04038

Reel & Bedknife



Item No	R&R Part No.	OEM Part No.	Description	Qty Req	Order Quantity
2	<b>R108-4303</b>	104-7720, 108-4303	Bedknife - Micro Cut Extended .062 - .187 HOC	1	
<i>Detail Description: R&amp;R Bedknives are manufactured from high carbon-boron alloy steel and then hardened to RC46-49 to match the temper of our reel blades and original equipment reels. Bedknives are surface ground on the top and front edge and straightened three times before being packaged with oil for rust prevention. All R&amp;R Bedknives now have an increased front edge grind for added life. All R&amp;R Bedknives are guaranteed against defects in material and workmanship under normal use for the life of the part.:</i>					
2	<b>R93-4263</b>	63-8560, 66-9320, 93-4263, 93-6039	Bedknife - Tournament Cut .125 - .500 HOC	0	
<i>Detail Description: R&amp;R Bedknives are manufactured from high carbon-boron alloy steel and then hardened to RC46-49 to match the temper of our reel blades and original equipment reels. Bedknives are surface ground on the top and front edge and straightened three times before being packaged with oil for rust prevention. All R&amp;R Bedknives now have an increased front edge grind for added life. All R&amp;R Bedknives are guaranteed against defects in material and workmanship under normal use for the life of the part.:</i>					
2	<b>R108-4302</b>	108-4301, 108-4302	Bedknife - Tournament Cut Extended .125 - .500 HOC	1	
<i>Detail Description: R&amp;R Bedknives are manufactured from high carbon-boron alloy steel and then hardened to RC46-49 to match the temper of our reel blades and original equipment reels. Bedknives are surface ground on the top and front edge and straightened three times before being packaged with oil for rust prevention. All R&amp;R Bedknives now have an increased front edge grind for added life. All R&amp;R Bedknives are guaranteed against defects in material and workmanship under normal use for the life of the part.:</i>					
2	<b>R93-4264</b>	57-4960, 63-8470, 93-4264	Bedknife - Low Cut .187 - 1.00 HOC	1	
<i>Detail Description: R&amp;R Bedknives are manufactured from high carbon-boron alloy steel and then hardened to RC46-49 to match the temper of our reel blades and original equipment reels. Bedknives are surface ground on the top and front edge and straightened three times before being packaged with oil for rust prevention. All R&amp;R Bedknives now have an increased front edge grind for added life. All R&amp;R Bedknives are guaranteed against defects in material and workmanship under normal use for the life of the part.:</i>					
2	<b>R150466</b>	63-8600, 64-6393, 94-6393	Bedknife - Super Thick .312 - 1.00 HOC	1	

All original equipment manufacturers names and part numbers are used for identification purposes only, and we are in no way implying that our products are original equipment parts. Prices subject to change without notice.



# Replaces Toro Greensmaster 1010 Parts

Mower - Model 04038

Reel & Bedknife



Item No	R&R Part No.	OEM Part No.	Description	Qty Req	Order Quantity
---------	--------------	--------------	-------------	---------	----------------

*Detail Description: R&R Bedknives are manufactured from high carbon-boron alloy steel and then hardened to RC46-49 to match the temper of our reel blades and original equipment reels. Bedknives are surface ground on the top and front edge and straightened three times before being packaged with oil for rust prevention. All R&R Bedknives now have an increased front edge grind for added life. All R&R Bedknives are guaranteed against defects in material and workmanship under normal use for the life of the part.:*

2	<b>R94-6392</b>	62-2500, 94-6392	Bedknife - High Cut .312 - 1.00 HOC	1	
---	-----------------	---------------------	--	---	--

*Detail Description: R&R Bedknives are manufactured from high carbon-boron alloy steel and then hardened to RC46-49 to match the temper of our reel blades and original equipment reels. Bedknives are surface ground on the top and front edge and straightened three times before being packaged with oil for rust prevention. All R&R Bedknives now have an increased front edge grind for added life. All R&R Bedknives are guaranteed against defects in material and workmanship under normal use for the life of the part.:*

## R&R Razor Tool Steel, Lifetime Guaranteed

2	<b>R115-1880</b>	115-1880	Bedknife - Razor Tool Steel - 21 Micro Cut .062 - .187 HOC	1	
---	------------------	----------	---	---	--

*Detail Description: R&R Razor bedknives are manufactured from premium alloy tool steel steel and then hardened to RC48-51 to match the temper of our Razor reel blades and original equipment premium series reels. Bedknives are surface ground on the top and front edge and specially packaged for rust prevention. All R&R Bedknives now have an increased front edge grind for added life. All R&R Bedknives are guaranteed against defects in material and workmanship under normal use for the life of the part. You can expect up to double the life over standard bedknives.:*

2	<b>R115-1881</b>	115-1881	Bedknife - Razor Tool Steel - 21 Tournament Cut .125 - .500 HOC	1	
---	------------------	----------	---	---	--

*Detail Description: R&R Razor bedknives are manufactured from premium alloy tool steel steel and then hardened to RC48-51 to match the temper of our Razor reel blades and original equipment premium series reels. Bedknives are surface ground on the top and front edge and specially packaged for rust prevention. All R&R Bedknives now have an increased front edge grind for added life. All R&R Bedknives are guaranteed against defects in material and workmanship under normal use for the life of the part. You can expect up to double the life over standard bedknives.:*

2	<b>R112-7475</b>	112-7475	Bedknife - Razor Tool Steel - 22 x 3/8 Fairway	1	
---	------------------	----------	---	---	--

All original equipment manufacturers names and part numbers are used for identification purposes only, and we are in no way implying that our products are original equipment parts. Prices subject to change without notice.





# Replaces Toro Greensmaster 1010 Parts

Mower - Model 04038

Reel & Bedknife



Item No	R&R Part No.	OEM Part No.	Description	Qty Req	Order Quantity
---------	--------------	--------------	-------------	---------	----------------

*Detail Description: R&R Razor bedknives are manufactured from premium alloy tool steel steel and then hardened to RC48-51 to match the temper of our Razor reel blades and original equipment premium series reels. Bedknives are surface ground on the top and front edge and specially packaged for rust prevention. All R&R Bedknives now have an increased front edge grind for added life. All R&R Bedknives are guaranteed against defects in material and workmanship under normal use for the life of the part. You can expect up to double the life over standard bedknives.:*

## Overhaul Kits and Service Tools

4	<b>R30067</b>	30067	Filter Kit - 400 Hour Maintenance	0
---	---------------	-------	-----------------------------------	---

*Detail Description: Includes: 1 ea: RAK11013-2132 Air Filter, RAK11013-2133 Air Filter & RN7734 NGK Spark Plug:*

5	<b>R51-0880</b>	51-0880	Bedknife Screw Driver Tool	0
---	-----------------	---------	----------------------------	---

*Detail Description: Easily install and remove bed knife screws with the help of a ratchet with 3/8" drive. Tool manufactured with hardened alloy steel.:*

## Belts

10	<b>R65-9080</b>	65-9080	Belt - Countershaft	1
11	<b>R92-9218</b>	92-9218	Belt - Engine Set of 2	1
12	<b>R150525</b>	65-6200	Belt - Reel Drive	1
13	<b>R150527</b>	65-6210	Belt - Drum Drive	2

## Filters

20	<b>RAK11013-2132</b>	93-8636	Kawasaki Element-Air Filter	1
20	<b>RRF10182</b>	93-8636	SilverGuard Air Filter	1
21	<b>RAK11013-2133</b>	93-8637	Kawasaki Pre Cleaner Foam - Air Filter	1
21	<b>RRF10410</b>	93-8637	SilverGuard Foam Filter	1
22	<b>RRF10204</b>	121-0618	SilverGuard Air Filter - Inner	1

All original equipment manufacturers names and part numbers are used for identification purposes only, and we are in no way implying that our products are original equipment parts. Prices subject to change without notice.



# Replaces Toro Greensmaster 1010 Parts

Mower - Model 04038

Reel & Bedknife



Item No	R&R Part No.	OEM Part No.	Description	Qty Req	Order Quantity
23	<b>R121-0675</b>	121-0675	Fuel Strainer Assy	1	
<b>Other Parts Available</b>					
30	<b>R100-1270</b>	100-1270	Sensor - Proximity	1	
31	<b>RN3922</b>	121-0547	NGK Spark Plug - BR6HS	1	
32	<b>R133-8897</b>	121-6355, 133-8897	Recoil Starter Assy	1	
38	<b>R65-6460</b>	65-6460	Bracket - RH	1	
39	<b>R119-4151</b>	119-4151	Screw - Bedknife 5/16-18 x 17/32	13	
39	<b>R150476</b>	3-3816, 3-6462, 57-4910	Screw - Bedknife 5/16-18 x 5/8	13	
40	<b>R88-7590</b>	88-7590	Shaft - Transport Wheel RH	1	
41	<b>R88-7510</b>	88-7510	Shaft - Extension RH Drum	1	
42	<b>R94-5850</b>	94-5850	Spindle - Rear Roller Drum	1	
43	<b>R88-7520</b>	88-7520	Shaft - Extension LH Drum	1	
44	<b>R88-7580</b>	88-7580	Shaft - Transport Wheel LH	1	
45	<b>R106-2619</b>	106-2619	Seal - Strip	1	
46	<b>R36-7260</b>	36-7260	Bar - Cut Off Grass Shield	1	
47	<b>R93-8064</b>	93-8064	Decal - Warning	1	
48	<b>R65-6450</b>	65-6450	Bracket - LH	1	
49	<b>RA203605</b>	251-82, 6610	Bearing	2	
50	<b>R99-2097</b>	99-2097	Detent - Bed Bar Adjuster	2	

All original equipment manufacturers names and part numbers are used for identification purposes only, and we are in no way implying that our products are original equipment parts. Prices subject to change without notice.



# Replaces Toro Greensmaster 1010 Parts

Mower - Model 04038

Reel & Bedknife



Item No	R&R Part No.	OEM Part No.	Description	Qty Req	Order Quantity
51	<b>R106-5363</b>	106-5363	Shaft - Adjusting - Bed Bar - Stainless	2	
52	<b>R106-5344</b>	106-5344	Bushing - Flanged and Keyed	4	
53	<b>R106-5335</b>	106-5335	Wave Washer - Reel Adjusting	2	
53	<b>R119-4164</b>	119-4164	Washer - Wave	2	
54	<b>R32120-93</b>	32120-93	Snap Ring - HD	2	
55	<b>R99-2096</b>	99-2096	Screw - Bed Bar Adjustment - M10 Thrd 1 End	2	
56	<b>R99-2098</b>	99-2098	Washer - Bed Bar Adjuster	2	
57	<b>R119-4156</b>	119-4156	Spring - Compression	2	
58	<b>R33025-00</b>	32025-00, 33025-00	Locknut - 10mm x 1.5 Jam	2	
59	<b>R322-26</b>	322-26	Bolt - Hx HD 5/16-18 x 3/8	2	
60	<b>R3253-4</b>	01-166-0110, 01-166-0510, 23-10-GD, 24-7170, 30-8520, 3253-4, 48-9350, 48-9360, 48-9570, 68-9420, 99-7577	Washer - Lock 5/16 Zinc	2	
61	<b>R251-342</b>	251-342	Bearing - Reel	2	
62	<b>R253-163</b>	253-163	Seal - Reel	2	
63	<b>R253-159</b>	253-159	Seal - Drum	2	
64	<b>R364170</b>	253-118, 62-3400	Seal	1	

All original equipment manufacturers names and part numbers are used for identification purposes only, and we are in no way implying that our products are original equipment parts. Prices subject to change without notice.



# Replaces Toro Greensmaster 1010 Parts

Mower - Model 04038

Reel & Bedknife



Item No	R&R Part No.	OEM Part No.	Description	Qty Req	Order Quantity
65	<b>R253-96</b>	253-96	Seal - Oil Single Lip Reel	1	
66	<b>R65-6530</b>	65-6530	Spacer - Seal	1	
67	<b>R65-6520</b>	65-6520	Spacer	1	
68	<b>R65-7910</b>	65-7910	Spacer - Latch	2	
69	<b>R99-7420</b>	100-8493, 99-7420	Plug-Hole	1	
70	<b>R170714</b>	302-34, 302-39, 62-3520	Fitting - Pressure Relief	2	
71	<b>R65-8640</b>	65-6090, 65-8640	Housing - Bearing	1	
72	<b>R3290-485</b>	3290-485	Washer - Wave	1	
73	<b>R32151-92</b>	32151-92	Retaining Ring	1	
74	<b>R63-9510</b>	63-9480, 63-9510	Bushing - Rubber For Bed Bar	2	
75	<b>R52-2890</b>	52-2890	Bushing - Flanged	2	
76	<b>R93-6049</b>	93-6049	Bracket - HOC LH	1	
77	<b>R93-6090</b>	93-6090	Arm - Roller HOC	2	
78	<b>R93-6048</b>	93-6048	Bracket - HOC RH	1	
79	<b>R700414</b>	302-11, 302-19, 302-4, 32-8170	Zerk - Grease 1/4-28 45 Deg	2	
80	<b>R65-8770</b>	65-8770	Bushing	2	
81	<b>R251-338</b>	251-338	Bearing - Ball	2	

All original equipment manufacturers names and part numbers are used for identification purposes only, and we are in no way implying that our products are original equipment parts. Prices subject to change without notice.





## Replaces Toro Greensmaster 1010 Parts

Mower - Model 04038

Reel & Bedknife



Item No	R&R Part No.	OEM Part No.	Description	Qty Req	Order Quantity
82	R151712	108-6471, 112-9177, 94-9024	LED Oval Work Light - 12 LED 30w	2	
83	R65-8570	65-7250, 65-8570	Rod - Mounting Grass Basket	2	
84	R93-6051	93-6051	Bolt - HOC	2	
85	R117-9493	117-9493	Bolt - Bed Bar - Hardened	2	
86	R3296-28	119-4154, 140-9234, 32127-34, 32128-7, 32128-8, 32136-7, 3296-28	Nut - 1/2-20 ESNA Jam	2	
87	R52-2860	119-4150, 52-2860	Washer - Bed Bar Pivot	4	
88	R52-2900	52-2900	Washer - Nylon	4	
89	R32151-95	32151-90, 32151-95	Retaining Ring	2	
90	R112-9279-03	112-9279-03	Bedbar - Aggressive	1	
91	R112-9471	112-9471	Grass Shield	1	
92	R93-6056	93-6056	Shaft - Power	1	
93	R32128-21	32128-21	Locknut - Flanged 3/8-16 Whiz Top Lock	2	
94	R32151-89	32151-89	Retaining Ring - Bowed	1	
95	R3254-4	21-3890, 26-8050, 3254-4	Washer - Lock 1/2 Z Int Star	1	

All original equipment manufacturers names and part numbers are used for identification purposes only, and we are in no way implying that our products are original equipment parts. Prices subject to change without notice.



# Replaces Toro Greensmaster 1010 Parts

Mower - Model 04038

Reel & Bedknife



Item No	R&R Part No.	OEM Part No.	Description	Qty Req	Order Quantity
96	R322-10	20-30-AD, 24-7180, 322-10, 322-10 , 3223-6, 513347	Bolt - Hex HD 5/16-18 x 2	1	
97	R65-6290	65-6259, 65-6290	Spring-Detent	1	
98	R301504	2296-42, 301504, 32127-24, 32128-33, 32146-17, 3296-16, 3296-42, 3296-42 , 915661P	Locknut - ESNA 1/4-20	6	
99	R400260	01-178-0605, 18-4100, 19-8270, 323-3, 323-33, 323-34, 323-5	Bolt - Hex HD 3/8-16 x 7/8	2	
100	R3253-21	215-51, 30-8470, 3253-21, Jul-12	Washer - Lock 3/8	2	
101	R400258	01-150-0800, 01-178-0600, 01-178-0606, 20-45-AD, 31-0200, 31-9910, 3224-1, 323-4	Bolt - Hex HD 3/8-16 x 3/4	2	

All original equipment manufacturers names and part numbers are used for identification purposes only, and we are in no way implying that our products are original equipment parts. Prices subject to change without notice.



# Replaces Toro Greensmaster 1010 Parts

Mower - Model 04038

Reel & Bedknife



Item No	R&R Part No.	OEM Part No.	Description	Qty Req	Order Quantity
102	R3254-6	01-166-0010, 01-166-0280, 01-166-0610, 3253-5, 3254-18, 3254-6, 3290-223, 48-9370	Washer - Lock 3/8	1	
103	R3296-39	32127-25, 32128-36, 3290-357, 3296-17, 3296-22, 3296-39, 915663P, 99-7443	Locknut - 3/8-16 Nylon	2	
104	R3296-29	1-804256, 3290-357, 3296-29, 915662P	Locknut - 5/16-18 ESNA	2	
105	R322-5	01-178-0508, 20-26-AD, 20-26-AGD, 30-9000, 322-5, 513341, 519755, 908019P, N/A	Bolt - Hex HD 5/16-18 x 1	2	
106	R3234-14	3234-14, 3234-23	Bolt - Hex Serrated Washer HD	1	
107	R88-7200	88-7200	Washer - Flat	1	
108	R400106	321-3, 513315, 908002P	Bolt - Hex HD 1/4-20 x 5/8	4	

All original equipment manufacturers names and part numbers are used for identification purposes only, and we are in no way implying that our products are original equipment parts. Prices subject to change without notice.



# Replaces Toro Greensmaster 1010 Parts

Mower - Model 04038

Reel & Bedknife



Item No	R&R Part No.	OEM Part No.	Description	Qty Req	Order Quantity
109	R3256-22	24-9-BD, 3-1032, 3256-1, 3256-22, 93-0954, 93-0989	Washer - Flat 1/4 Yellow	6	
110	R3255-8	3255-8	Washer - Lock 5/16 Ext	4	
111	R251-318	251-11, 251-204, 251-318, 251-38, 251-89	Bearing - Ball	1	
112	R251-336	251-336	Bearing	2	
113	R92-8914	3231-5, 65-8530, 92-8914	Bolt - Tapered Face 5/16-18 x 7/8	6	
114	R32151-75	100-6594, 19-4590, 32120-11, 32120-75, 32151-75	Retaining Ring	1	
115	R3242-4	3242-4	Screw - Set Sq HD 5/16-18 x 1	2	
116	R443106	01-188-0518, 22-12-AJD, 32111-4, 3217-4, 3217-6, 3218-2, 513295, 513412, 915112P, 915978, 915979	Nut - 5/16-18 Y/Zinc Plated	2	
117	R322-2	322-2, 513338P	Bolt - Hex HD 5/16-18 x 5/8	2	
118	R3296-33	3296-33	Locknut - 5/8-18 ESNA Jam	1	

All original equipment manufacturers names and part numbers are used for identification purposes only, and we are in no way implying that our products are original equipment parts. Prices subject to change without notice.



# Replaces Toro Greensmaster 1010 Parts

Mower - Model 04038

Reel & Bedknife



Item No	R&R Part No.	OEM Part No.	Description	Qty Req	Order Quantity
119	<b>R104-8300</b>	104-8300, 104-8300 , 119-4041	Locknut - 5/16-18 Flanged Y/Zinc	4	
120	<b>R71-1360</b>	251-219, 251-253, 251-254, 251-320, 71-1360, 88-7880, 94-3405	Bearing	2	
121	<b>R92-7302</b>	65-8240, 86-7160, 92-7302	Locknut - Reel	1	
122	<b>R3296-57</b>	3296-57	Locknut - Nylon Zinc Jam	2	
123	<b>R19H3130</b>	322-9, 3223-5	Bolt - Hex HD 5/16-18 x 1-3/4	8	
124	<b>R3219-5</b>	01-188-0820, 22-15-BJD, 22-15-BJKD, 3219-5	Nut - 1/2-20	1	
125	<b>R94-5870</b>	94-5870	Cable - Clutch Assy	1	
126	<b>R115-1714</b>	115-1714	Cable - Brake	1	
127	<b>R130-0107</b>	130-0107	Cable Assy - Clutch Control	1	
128	<b>R120-2709</b>	120-2709	Cable- Throttle	1	
129	<b>R93-9014</b>	65-7020, 92-7676, 93-9014	Pin-Clutch, Actuat	2	

All original equipment manufacturers names and part numbers are used for identification purposes only, and we are in no way implying that our products are original equipment parts. Prices subject to change without notice.