

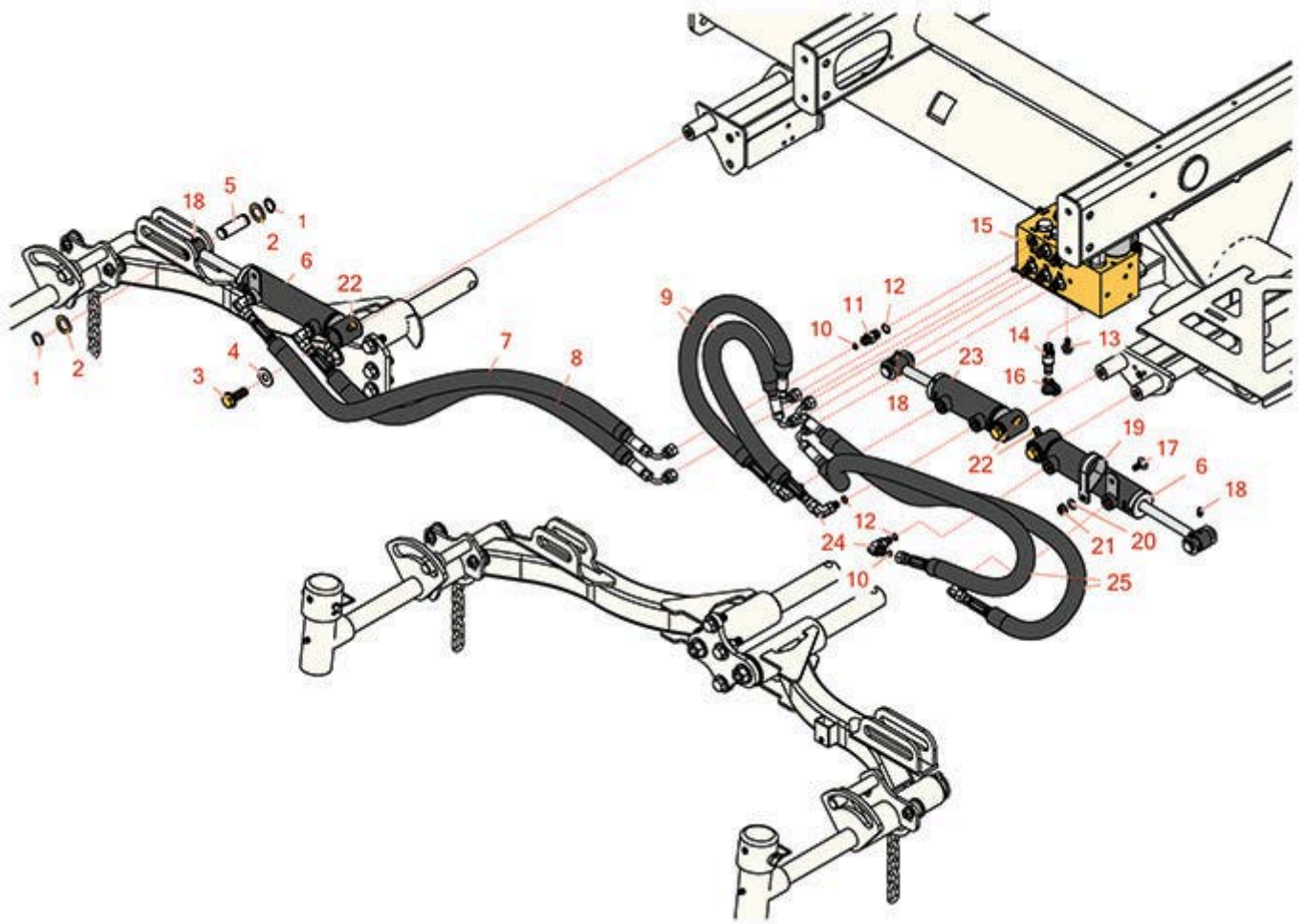


# Replaces R&R Products Reel Max 744LP

## Parts

*Traction Unit*

*Front Lift Arm Hydraulics*



All original equipment manufacturers names and part numbers are used for identification purposes only, and we are in no way implying that our products are original equipment parts. Prices subject to change without notice.



# Replaces R&R Products Reel Max 744LP

## Parts

*Traction Unit*

*Front Lift Arm Hydraulics*



Item No	R&R Part No.	OEM Part No.	Description	Qty Req	Order Quantity
1	<b>R32120-93</b>		Snap Ring - HD	6	
2	<b>R3-6498</b>	R47-8270	Washer - Thrust	6	
3	<b>R3234-38</b>		Bolt - Flanged Hex 1/2-13 x 1-1/4	3	
4	<b>R453017</b>	3256-26, R01-166-0050, R01-166-0240, R01-166-0800, R24-13-AD, R24-14-AD, R32-8110, R3256-6, R452012, R69-8980	Washer - Flat 1/2	1	
5	<b>R104-0046</b>		Pin - Slide - Cylinder	3	
6	<b>R107-2033</b>	R110-9033	Hydraulic Cylinder	2	
7	<b>R106-3692</b>		Hydraulic Hose Assy	1	
8	<b>R106-3693</b>		Hydraulic Hose Assy	1	
9	<b>R93-6887</b>		Hydraulic Hose Assy	2	
10	<b>R237-21</b>		O-Ring	12	
11	<b>R340-92</b>		Hydraulic Fitting - Striaght	6	
12	<b>R237-22</b>	R107-8844, R232-72, R237-78	O-Ring	12	
13	<b>R3234-14</b>	R3234-23	Bolt - Hex Serrated Washer HD	2	
14	<b>R59-7410</b>		Tip-Nipple	1	
15	<b>R105-7577</b>		Manifold Assy - Lift Blocks	1	
16	<b>R354-79</b>		Cap-Dust	1	

All original equipment manufacturers names and part numbers are used for identification purposes only, and we are in no way implying that our products are original equipment parts. Prices subject to change without notice.



# Replaces R&R Products Reel Max 744LP

## Parts

*Traction Unit*

*Front Lift Arm Hydraulics*



Item No	R&R Part No.	OEM Part No.	Description	Qty Req	Order Quantity
17	<b>R3230-23</b>	R3-5861	Bolt - 5/16-18x3/4 - Carriage	1	
18	<b>R302-5</b>	R173-0, R21-6010, R255825, R302-37, R302-47, R302-57, R302-58, R302-6, R31-0300, R32-9660, R471214, R471223, R471226, R60-0800, R62-3880, R92-4181, RJD7797, RJD7842, RJD7844, RM0004, RZS48114-04	Fitting - Grease	4	
19	<b>R2412-137</b>		Clamp-R, Double	1	
20	<b>R453009</b>	3256-3, R01-166-0400, R24-10-BD, R24-9-AD, R24H1136, R32-9650, R3256-2, R3256-23, R3256-67, R3290-217, R3556-3, R4-2390, R452006, R7-0152	Washer - Flat 5/16 SAE	1	
21	<b>R104-8300</b>	R119-4041	Locknut - 5/16-18 Flanged Y/Zinc	1	
22	<b>R302-60</b>		Zerk - Grease 90 Deg.	3	
23	<b>R107-2034</b>	R110-9034	Hydraulic Cylinder	1	

All original equipment manufacturers names and part numbers are used for identification purposes only, and we are in no way implying that our products are original equipment parts. Prices subject to change without notice.



# Replaces R&R Products Reel Max 744LP Parts

*Traction Unit  
Front Lift Arm Hydraulics*



Item No	R&R Part No.	OEM Part No.	Description	Qty Req	Order Quantity
24	<b>R340-132</b>		Hydraulic Fitting - 90 Deg	6	
25	<b>R85-4940</b>		Hydraulic Hose Assy	2	

All original equipment manufacturers names and part numbers are used for identification purposes only, and we are in no way implying that our products are original equipment parts. Prices subject to change without notice.