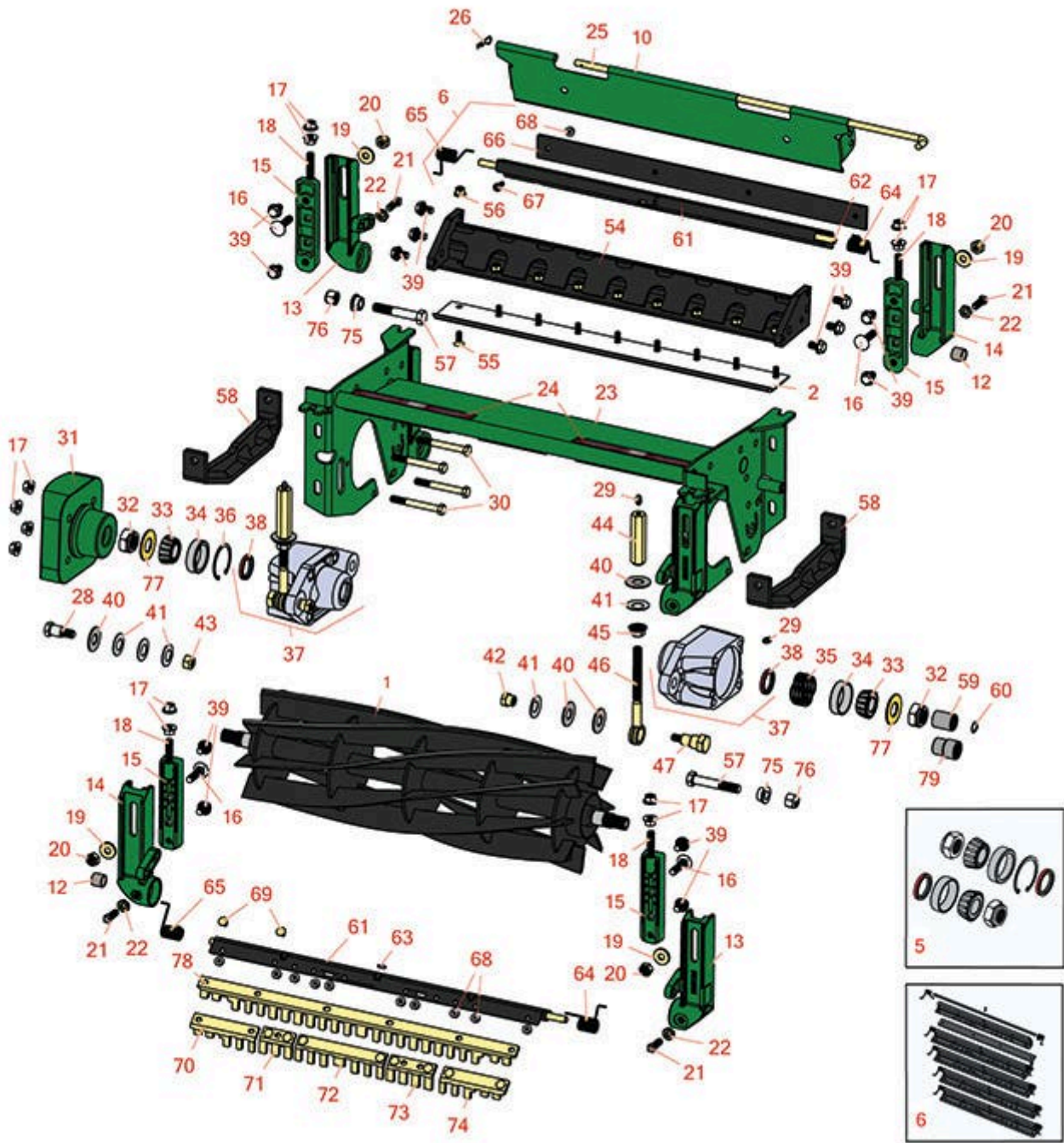




Replaces John Deere 3225B Reel Mower

Parts

Heavy Cutting Unit
Reel & Bedknife



All original equipment manufacturers names and part numbers are used for identification purposes only, and we are in no way implying that our products are original equipment parts. Prices subject to change without notice.



Replaces John Deere 3225B Reel Mower Parts

Heavy Cutting Unit
Reel & Bedknife



| Item No | R&R Part No. | OEM Part No. | Description | Qty Req | Order Quantity |
|---------|--------------|--------------|-------------|---------|----------------|
|---------|--------------|--------------|-------------|---------|----------------|

R&R Reels, Lifetime Guaranteed

| | | | | | |
|---|-----------|---------|-----------------|---|--|
| 1 | RAET11159 | AMT2893 | Reel - 8 Blade | 1 | |
| 1 | RAMT2895 | AMT2895 | Reel - 5 Blade | 1 | |
| 1 | RAMT2894 | AMT2894 | Reel - 10 Blade | 1 | |

R&R Bedknives, Lifetime Guaranteed

| | | | | | |
|---|----------|---------|--------------------------|---|--|
| 2 | RET17751 | ET17751 | Bedknife - Standard 12mm | 1 | |
| 2 | RMT1928 | MT1928 | Bedknife - 9.5mm (3/8) | 1 | |
| 2 | RMT3983 | MT3983 | Bedknife - 6.3 mm (1/4) | 1 | |

R&R Razor Tool Steel Bedknife, Lifetime Guaranteed

| | | | | | |
|---|---------|--|---|---|--|
| 2 | R130135 | | Bedknife - Razor Tool Steel - 22 High Cut | 1 | |
|---|---------|--|---|---|--|

Overhaul Kits

| | | | | | |
|--|---------|--|-----------------------------|---|--|
| 5 | R100174 | | Overhaul Kit - Cutting Unit | 1 | |
| <i>Tech Note: Includes 2 ea.: R254-90 Bearing Cups, RJD8960 Bearing Cones, RMT1115 Seals, RMT1211 Locknuts; 1 ea.: R32120-65 Retaining Ring;</i> | | | | | |

| | | | | | |
|--|----------|---------|----------------------------------|---|--|
| 6 | RBM17684 | BM17684 | Scraper Kit - Solid Roller SET/5 | 1 | |
| <i>Tech Note: Includes 20 ea: R03M7221 Bolt, R14M7303 Nut; 5 ea: R34M7010 Pin, R500571 Scraper Bar, RET17629 LH Spring, RET17630 RH Spring, RET17757 Pin, RMT2595 Scraper Blade;</i> | | | | | |

Other Parts Available

| | | | | | |
|----|----------|---------|-------------------------------|---|--|
| 10 | RET17753 | ET17753 | Shield - Rear | 1 | |
| 12 | RMT74 | MT74 | Bushing - Roller Bkt | 4 | |
| 13 | RMT6595 | MT6595 | Adjuster - L. Front / R. Rear | 2 | |
| 13 | RET17633 | ET17633 | Adjuster - L. Front / R. Rear | 2 | |

All original equipment manufacturers names and part numbers are used for identification purposes only, and we are in no way implying that our products are original equipment parts. Prices subject to change without notice.



Replaces John Deere 3225B Reel Mower Parts

*Heavy Cutting Unit
Reel & Bedknife*



| Item No | R&R Part No. | OEM Part No. | Description | Qty Req | Order Quantity |
|---------|------------------|------------------------------|-------------------------------|---------|----------------|
| 14 | RAMT100 | AMT100, ET17632 | Adjuster - R. Front / L. Rear | 2 | |
| 15 | RAET11311 | AET11311 | Clamp - Roller Bkt | 4 | |
| 16 | R03M7194 | 03M7194 | Bolt | 4 | |
| 17 | R14M7296 | 14M7296 | Nut - 10mm x 1.5 Flanged | 8 | |
| 18 | RET17646 | ET17646 | Stud - Clamp | 4 | |
| 19 | R24H1308 | 24H1308 | Washer | 4 | |
| 20 | R14M7400 | 14M7400 | Locknut - 10mm | 4 | |
| 21 | RH138435 | H138435 | Screw - Set | 2 | |
| 22 | R14M7152 | 14M7152 | Nut - 10mm x 1.5 Jam | 2 | |
| 23 | RAET11305 | AET11305 | Frame | 1 | |
| 24 | RMT6517 | MT6517 | Label - Warning | 2 | |
| 25 | RET17759 | ET17759 | Pin | 1 | |
| 26 | RR50647 | J16931, R50647 | Pin - Hair Cotter | 2 | |
| 28 | RMT6338 | MT6338 | Bolt - Shoulder | 2 | |
| 29 | R302-5 | JD7797, JD7842, JD7844 | Fitting - Grease | 4 | |
| 30 | R19M8197 | 19M8197 | Bolt - Hx HD | 8 | |
| 31 | RMT761 | MT761 | Weight | 1 | |
| 32 | RMT1211 | MT1211 | Locknut - 7/8-14 All Metal | 2 | |
| 33 | RJD8960 | JD8960 | Tapered Bearing Cone | 2 | |
| 34 | R254-90 | JD8239 | Tapered Bearing Cup | 2 | |

All original equipment manufacturers names and part numbers are used for identification purposes only, and we are in no way implying that our products are original equipment parts. Prices subject to change without notice.



Replaces John Deere 3225B Reel Mower Parts

*Heavy Cutting Unit
Reel & Bedknife*



| Item No | R&R Part No. | OEM Part No. | Description | Qty Req | Order Quantity |
|---------|------------------|----------------------|-----------------------------------|---------|----------------|
| 35 | RET17510 | ET17510 | Spring | 1 | |
| 36 | R32120-65 | N51168 | Ring - Retaining | 1 | |
| 37 | RAMT683 | AMT683 | Housing - Bearing w/Zerk and Seal | 2 | |
| 38 | RMT1115 | MT1115 | Seal - Reel | 2 | |
| 39 | R19M7783 | 19M7783 | Screw - Bed Bar Mount | 14 | |
| 40 | RET16424 | ET16424 | Washer | 6 | |
| 41 | RET16678 | ET16678 | Washer - Spring | 10 | |
| 42 | RET16572 | ET16572 | Nut - Hex | 2 | |
| 43 | RA31867 | A31867 | Locknut | 2 | |
| 44 | RAET10880 | AET10880, AMT2965 | Adjuster - Reel | 2 | |
| 45 | RET17361 | ET17361 | Nut - Flanged Eyebolt | 2 | |
| 46 | RET16897 | ET16897 | Eyebolt | 2 | |
| 47 | RET16896 | ET16896 | Bolt - Shoulder | 2 | |
| 54 | RAMT2973 | AMT2973 | Backing Bar - Bed Knife | 1 | |
| 55 | R19M7573 | 19M7573 | Screw - Bedknife M8-1.25 x 20 | 9 | |
| 56 | R14M7396 | 14M7396 | Locknut - Flanged Nyloc | 9 | |
| 57 | R19H1820 | 19H1820 | Cap Screw - 1/2-13 x 3 | 2 | |
| 58 | RMT2527 | MT2527 | Shoe - Skid | 2 | |
| 59 | RTCA12581 | TCA12581 | Coupling - Reel 11 Tooth | 1 | |
| 60 | RMT2745 | MT2745 | Snap Ring | 1 | |
| 61 | R500571 | MT2369 | Bar - Scraper | 2 | |

All original equipment manufacturers names and part numbers are used for identification purposes only, and we are in no way implying that our products are original equipment parts. Prices subject to change without notice.



Replaces John Deere 3225B Reel Mower Parts

Heavy Cutting Unit
Reel & Bedknife



| Item No | R&R Part No. | OEM Part No. | Description | Qty Req | Order Quantity |
|---|-----------------|---------------------|--|---------|----------------|
| 62 | RET17757 | ET11757, ET17757 | Pin - Scraper | 2 | |
| 63 | R34M7010 | 34M7010 | Pin - Spring | 2 | |
| 64 | RET17629 | ET17629 | Spring - Torsion LH | 2 | |
| 65 | RET17630 | ET17630 | Spring - Torsion RH | 2 | |
| 66 | RMT2595 | MT2595, MT2895 | Scraper Blade - Solid Roller | 1 | |
| 67 | R21M7246 | 21M7246 | Screw | 4 | |
| 68 | R14M7303 | 14M7303 | Nut - 6mm x 1.0 Flanged | 10 | |
| 69 | R03M7251 | 03M7251 | Bolt - Gr. Roller Scraper | 10 | |
| 70 | RMT5158 | MT5158 | Scraper - Fits J.D. RH End | 1 | |
| 71 | RMT2342 | MT2342 | Section - Grooved Scraper 3 Tooth | 1 | |
| 72 | RMT2340 | MT2340 | Scraper - Fits J.D. Center | 1 | |
| 73 | RMT2341 | MT2341 | Section - Grooved Scraper 4 Tooth | 1 | |
| 74 | RMT5159 | MT5159 | Scraper - Fits J.D. LH End | 1 | |
| 75 | RM71076 | M71076 | Bushing | 2 | |
| 76 | RK40014 | K40014 | Locknut - 1/2-13 All Metal Top Lock | 2 | |
| 77 | RM81551 | M81551 | Washer - 1.840 OD | 2 | |
| 78 | R500558 | | Scraper - Grooved Roller | 2 | |
| <i>Tech Note: 1 Piece Scraper fits OEM AET11262 & AMT2966 Grooved Roller:</i> | | | | | |
| 79 | RMT7067 | MT7067 | Coupling - Splined 9/11 Tooth | 1 | |

All original equipment manufacturers names and part numbers are used for identification purposes only, and we are in no way implying that our products are original equipment parts. Prices subject to change without notice.