

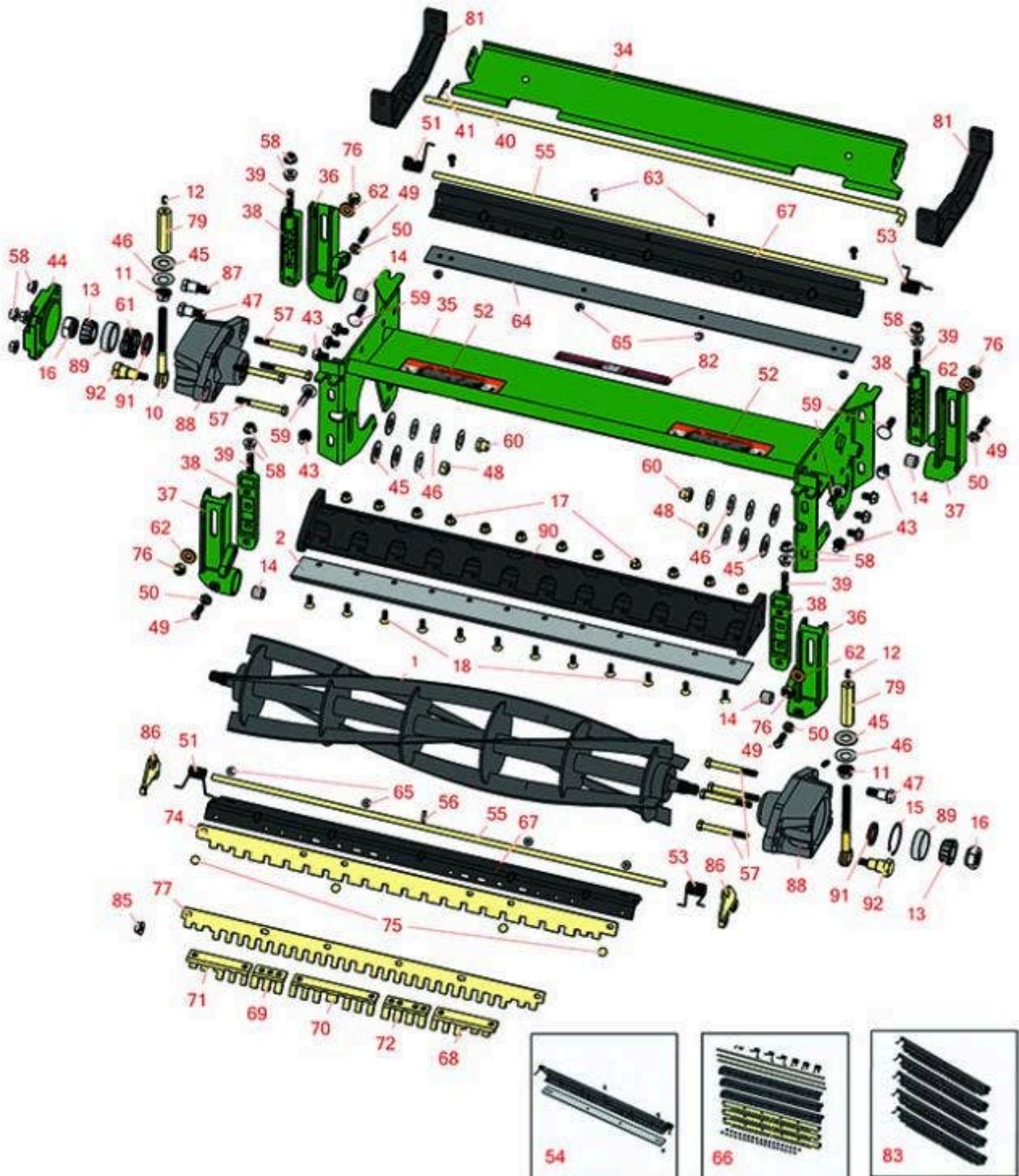


# Replaces John Deere 2653B Reel Mower

## Parts

Cutting Unit - Serial up to 030000

Reel & Bedknife



All original equipment manufacturers names and part numbers are used for identification purposes only, and we are in no way implying that our products are original equipment parts. Prices subject to change without notice.



# Replaces John Deere 2653B Reel Mower Parts

Cutting Unit - Serial up to 030000  
Reel & Bedknife



Item No	R&R Part No.	OEM Part No.	Description	Qty Req	Order Quantity
---------	--------------	--------------	-------------	---------	----------------

## R&R Reels, Lifetime Guaranteed

1	<b>RAET11157</b>	AET11157, AMT2868, AMT2870	Reel - 5 Blade	1	
---	------------------	----------------------------------	----------------	---	--

*Tech Note: Fits 26" 2653:*

1	<b>RAET11158</b>	AET11158, AMT2869	Reel - 8 Blade	1	
---	------------------	----------------------	----------------	---	--

*Tech Note: Fits 26" 2653:*

1	<b>RAMT1015</b>	AMT1015	Reel - 5 Blade	1	
---	-----------------	---------	----------------	---	--

*Tech Note: Fits 26" 2653A & 2653B:*

1	<b>RAMT1016</b>	AMT1016, AMT2871	Reel - 8 Blade	1	
---	-----------------	---------------------	----------------	---	--

*Tech Note: Fits 26" 2653A & 2653B:*

1	<b>RAMT1052</b>	AMT1052	Reel - 5 Blade	1	
---	-----------------	---------	----------------	---	--

*Tech Note: Fits 30" 2653A & 2653B:*

1	<b>RAMT1053</b>	AMT1053, AMT2890	Reel - 8 Blade	1	
---	-----------------	---------------------	----------------	---	--

*Tech Note: Fits 30" 2653A & 2653B:*

## R&R Bedknives, Lifetime Guaranteed

2	<b>RET17752</b>	ET17752	Bedknife - 26 in 10 Hole	1	
---	-----------------	---------	--------------------------	---	--

2	<b>RMT2396</b>	MT2396, MT6949	Bedknife - 26 in Low Cut 10 Hole	1	
---	----------------	-------------------	----------------------------------	---	--

2	<b>RMT1973</b>	MT1973	Bedknife - 30 in 12 Hole	1	
---	----------------	--------	--------------------------	---	--

## Other Parts Available

10	<b>RET16897</b>	ET16897	Eyebolt	2	
----	-----------------	---------	---------	---	--

All original equipment manufacturers names and part numbers are used for identification purposes only, and we are in no way implying that our products are original equipment parts. Prices subject to change without notice.



# Replaces John Deere 2653B Reel Mower Parts

Cutting Unit - Serial up to 030000  
Reel & Bedknife



Item No	R&R Part No.	OEM Part No.	Description	Qty Req	Order Quantity
11	<b>RET17361</b>	ET17361	Nut - Flanged Eyebolt	2	
12	<b>R302-5</b>	JD7797, JD7842, JD7844	Fitting - Grease	4	
13	<b>RJD8905</b>	JD8905	Bearing	2	
13	<b>RJD8960</b>	JD8960	Tapered Bearing Cone	2	
14	<b>RMT74</b>	MT74	Bushing - Roller Bkt	4	
15	<b>R32120-65</b>	N51168	Ring - Retaining	1	
16	<b>RP48362</b>	P48362	Locknut - Reel	2	
16	<b>RMT1211</b>	MT1211	Locknut - 7/8-14 All Metal	2	
17	<b>R14M7396</b>	14M7396	Locknut - Flanged Nyloc	12	
18	<b>R19M7573</b>	19M7573	Screw - Bedknife M8-1.25 x 20	12	
34	<b>RET17754</b>	ET17754	Deflector - 26 Grass	1	
34	<b>RMT1979</b>	MT1979	Deflector - 30 Grass	1	
35	<b>RAET11300</b>	AET11300	Frame - 26 in	1	
35	<b>RAMT1054</b>	AMT1054	Frame - 30 in	1	
35	<b>RAET11305</b>	AET11305	Frame	1	
<i>Tech Note: Fits 2653B:</i>					
36	<b>RET17633</b>	ET17633	Adjuster - L. Front / R. Rear	2	
36	<b>RMT6595</b>	MT6595	Adjuster - L. Front / R. Rear	2	
37	<b>RAMT100</b>	AMT100, ET17632	Adjuster - R. Front / L. Rear	2	
38	<b>RAET11311</b>	AET11311	Clamp - Roller Bkt	4	

All original equipment manufacturers names and part numbers are used for identification purposes only, and we are in no way implying that our products are original equipment parts. Prices subject to change without notice.



# Replaces John Deere 2653B Reel Mower Parts

Cutting Unit - Serial up to 030000  
Reel & Bedknife



Item No	R&R Part No.	OEM Part No.	Description	Qty Req	Order Quantity
39	<b>RET17646</b>	ET17646	Stud - Clamp	4	
40	<b>RET17760</b>	ET17760	Pin - 26 Deflector	1	
40	<b>RMT1980</b>	MT1980	Pin - 30 Deflector	1	
41	<b>RR50647</b>	J16931, R50647	Pin - Hair Cotter	1	
43	<b>R19M7783</b>	19M7783	Screw - Bed Bar Mount	10	
44	<b>RET17645</b>	MT7001	Cap - Reel Bearing Housing	1	
45	<b>RET16424</b>	ET16424	Washer	6	
46	<b>RET16678</b>	ET16678	Washer - Spring	10	
47	<b>RET16425</b>	ET16425	Bolt	2	
48	<b>RA31867</b>	A31867	Locknut	2	
49	<b>RH138435</b>	H138435	Screw - Set	4	
50	<b>R14M7152</b>	14M7152	Nut - 10mm x 1.5 Jam	4	
51	<b>RET17630</b>	ET17630	Spring - Torsion RH	1	
52	<b>RMT1520</b>	MT1520	Label	2	
53	<b>RET17629</b>	ET17629	Spring - Torsion LH	1	
54	<b>RMT2368</b>	MT2368	Scraper - Assy 26 Solid Roller	1	
<i>Tech Note: Includes: RET17630, RET17629, RET17758, R34M7010 RMT2594 R14M7303 &amp; R21M7246:</i>					
54	<b>RAMT1379</b>	AMT1379	Scraper - Assy Solid Roller 30	1	
55	<b>RET17758</b>	ET17758	Pin - 26 Scrapers	1	
55	<b>RMT1982</b>	MT1982	Pin - 30 Scrapers	1	
55	<b>RET16931</b>	ET16931	Pin - 30 Scraper	1	

All original equipment manufacturers names and part numbers are used for identification purposes only, and we are in no way implying that our products are original equipment parts. Prices subject to change without notice.



# Replaces John Deere 2653B Reel Mower Parts

Cutting Unit - Serial up to 030000  
Reel & Bedknife



Item No	R&R Part No.	OEM Part No.	Description	Qty Req	Order Quantity
56	<b>R34M7010</b>	34M7010	Pin - Spring	1	
57	<b>R19M8197</b>	19M8197	Bolt - Hx HD	4	
58	<b>R14M7296</b>	14M7296	Nut - 10mm x 1.5 Flanged	8	
59	<b>R03M7194</b>	03M7194	Bolt	4	
60	<b>RET16572</b>	ET16572	Nut - Hex	2	
61	<b>RET17510</b>	ET17510	Spring	1	
62	<b>R24H1308</b>	24H1308	Washer	4	
63	<b>R21M7246</b>	21M7246	Screw	4	
64	<b>RMT2594</b>	MT2594	Blade - 26 Scraper	1	
64	<b>RMT2593</b>	MT2593	Blade - 30 Scraper	1	
65	<b>R14M7303</b>	14M7303	Nut - 6mm x 1.0 Flanged	4	
66	<b>RBM18555</b>	BM18555	Scraper Kit - 26in SET/3	1	
<i>Tech Note: Fits J.D. 26" Grooved Rollers. Includes 18 ea: R03M7251 Bolt, R14M7303 Nut; 3 ea: R34M7010 Pin, R500563 Scraper, R500565 Scraper Bar, RET17629 LH Spring, RET17630 RH Spring, RET17758 Pin:</i>					
66	<b>RBM18554</b>	BM18554	Scraper Kit - 30in SET/3	1	
<i>Tech Note: Fits J.D. 30" Grooved Rollers. Includes 18 ea: R03M7251 Bolt, R14M7303 Nut; 3 ea: R34M7010 Pin, R500562 Bar, R500564 Scraper, RET17629 LH Spring, RET17630 RH Spring, RMT1982 Pin:</i>					
67	<b>R500565</b>	MT2368	Bar - Scraper 26	1	
67	<b>R500562</b>		Bar - 30 Scraper	1	
68	<b>RMT5159</b>	MT5159	Scraper - Fits J.D. LH End	1	
69	<b>RMT2342</b>	MT2342	Section - Grooved Scraper 3 Tooth	1	

All original equipment manufacturers names and part numbers are used for identification purposes only, and we are in no way implying that our products are original equipment parts. Prices subject to change without notice.



# Replaces John Deere 2653B Reel Mower Parts

Cutting Unit - Serial up to 030000  
Reel & Bedknife



Item No	R&R Part No.	OEM Part No.	Description	Qty Req	Order Quantity
70	<b>RMT2340</b>	MT2340	Scraper - Fits J.D. Center	1	
71	<b>RMT5158</b>	MT5158	Scraper - Fits J.D. RH End	1	
72	<b>RMT2341</b>	MT2341	Section - Grooved Scraper 4 Tooth	2	
74	<b>R500560</b>		Scraper - Fits 26 Rlr	1	
<i>Tech Note: Fits R&amp;R Grooved Rollers Only:</i>					
74	<b>R500561</b>		Scraper - Fits 30 Rlr	1	
<i>Tech Note: Fits R&amp;R Grooved Rollers Only:</i>					
75	<b>R03M7251</b>	03M7251	Bolt - Gr. Roller Scraper	4	
76	<b>R14M7400</b>	14M7400	Locknut - 10mm	4	
77	<b>R500563</b>		Scraper - Fits 26 OEM Grooved Rlr	1	
77	<b>R500564</b>		Scraper - Fits 30 OEM Grooved Rlr	1	
79	<b>RAET10880</b>	AET10880, AMT2965	Adjuster - Reel	2	
81	<b>RMT2527</b>	MT2527	Shoe - Skid	2	
82	<b>RMT6517</b>	MT6517	Label - Warning	1	
83	<b>RBM18607</b>	BM18607	Scraper Kit - OEM Grooved Roller Set / 5	1	
<i>Tech Note: Includes 30 ea: R03M7251 Bolt, R14M7303 Bolt; 5 ea: R34M7010 Pin, R500569 Scraper, R500570 Bar, RET16931 Pin, RET17629 LH Spring, RET17630 RH Spring:</i>					
85	<b>RH135891</b>	H135891	Locknut - 10mm x 1.5 Flanged 10.9	2	
<i>Tech Note: High Strength:</i>					
86	<b>RMT2407</b>	MT2407	Bracket - Roller Scraper	5	

All original equipment manufacturers names and part numbers are used for identification purposes only, and we are in no way implying that our products are original equipment parts. Prices subject to change without notice.



# Replaces John Deere 2653B Reel Mower Parts

*Cutting Unit - Serial up to 030000  
Reel & Bedknife*



Item No	R&R Part No.	OEM Part No.	Description	Qty Req	Order Quantity
87	<b>RMT6338</b>	MT6338	Bolt - Shoulder	2	
88	<b>RAMT683</b>	AMT683	Housing - Bearing w/Zerk and Seal	2	
88	<b>RAET11203</b>	AET11203	Housing - Bearing w/Seal and Zerk	2	
89	<b>R254-90</b>	JD8239	Tapered Bearing Cup	2	
90	<b>RAET11303</b>	AET11303	Backing Bar - 26 Bedknife	1	
90	<b>RAMT1051</b>	AMT1051	Backing Bar - 30 Bedknife	1	
91	<b>RAN50688</b>	AN50688	Seal - Reel - Fits 2653	2	
91	<b>RMT1115</b>	MT1115	Seal - Reel	2	
92	<b>RET16896</b>	ET16896	Bolt - Shoulder	2	

All original equipment manufacturers names and part numbers are used for identification purposes only, and we are in no way implying that our products are original equipment parts. Prices subject to change without notice.