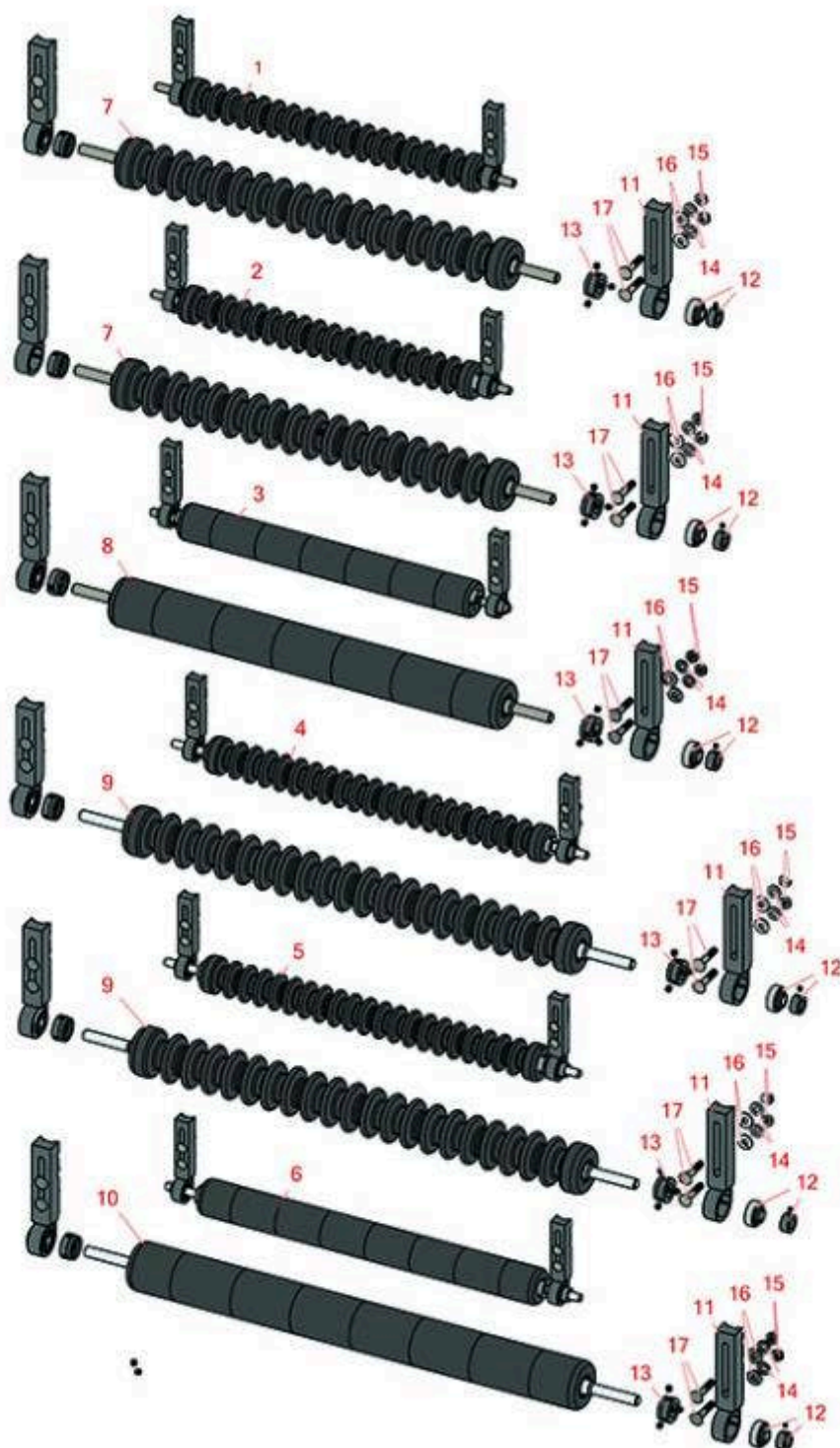




# Replaces John Deere 2653 Reel Mower Parts

Cutting Unit - Serial up to 030000  
Minuteman Roller System



All original equipment manufacturers names and part numbers are used for identification purposes only, and we are in no way implying that our products are original equipment parts. Prices subject to change without notice.



# Replaces John Deere 2653 Reel Mower Parts

Cutting Unit - Serial up to 030000  
Minuteman Roller System



Item No	R&R Part No.	OEM Part No.	Description	Qty Req	Order Quantity
---------	--------------	--------------	-------------	---------	----------------

## Complete Minuteman Roller Systems

1	<b>RMD3001</b>		Minuteman Front Grooved Roller System	0	
<i>Tech Note: Fits 26" Units.:</i>					
<i>Detail Description: Complete roller systems include roller and two brackets with bearings.:</i>					
2	<b>RMD3002</b>		Minuteman Rear Grooved Roller System	0	
<i>Tech Note: Fits 26" Units.:</i>					
<i>Detail Description: Complete roller systems include roller and two brackets with bearings.:</i>					
3	<b>RMD3003</b>		Minuteman Rear Smooth Roller System	0	
<i>Tech Note: Fits 26" Units.:</i>					
<i>Detail Description: Complete roller systems include roller and two brackets with bearings.:</i>					
4	<b>RMD3004</b>		Minuteman Front Grooved Roller System	0	
<i>Tech Note: Fits 30" Units.:</i>					
<i>Detail Description: Complete roller systems include roller and two brackets with bearings.:</i>					
5	<b>RMD3005</b>		Minuteman Rear Grooved Roller System	0	
<i>Tech Note: Fits 30" Units.:</i>					
<i>Detail Description: Complete roller systems include roller and two brackets with bearings.:</i>					
6	<b>RMD3006</b>		Minuteman Rear Smooth Roller System	0	
<i>Tech Note: Fits 30" Units.:</i>					
<i>Detail Description: Complete roller systems include roller and two brackets with bearings.:</i>					
<b>Minuteman Rollers Only</b>					
7	<b>RM524</b>		Minuteman Grooved Roller Only	0	
<i>Detail Description: Use with Minuteman Roller Bracket System Only:</i>					

All original equipment manufacturers names and part numbers are used for identification purposes only, and we are in no way implying that our products are original equipment parts. Prices subject to change without notice.



# Replaces John Deere 2653 Reel Mower Parts

Cutting Unit - Serial up to 030000  
Minuteman Roller System



Item No	R&R Part No.	OEM Part No.	Description	Qty Req	Order Quantity
8	RM525		Minuteman Smooth Roller Only	0	
<i>Detail Description: Use with Minuteman Roller Bracket System Only:</i>					
9	RM522		Minuteman Grooved Roller Only	0	
<i>Detail Description: Fits 30" Units. Use with Minuteman Roller Bracket System Only:</i>					
10	RM523		Minuteman Smooth Roller Only	0	
<i>Detail Description: Fits 30" Units. Use with Minuteman Roller Bracket System Only:</i>					
<b>Other Parts Available</b>					
11	RD121		Bracket Assy - Front/Rear RH/LH	0	
12	RMMB157		Bearing w/Locking Collar	0	
13	RMM3		End Hub - 7/8 ID	0	
14	R453011	24M7096	Washer - Flat 3/8 SAE Y/Zinc	0	
15	R443110		Nut - 3/8-16 Hex	0	
16	R120177		Washer - Lock 3/8	0	
17	RMM604		Bolt - Carriage 3/8-16 x 2 Gr 5	0	

All original equipment manufacturers names and part numbers are used for identification purposes only, and we are in no way implying that our products are original equipment parts. Prices subject to change without notice.