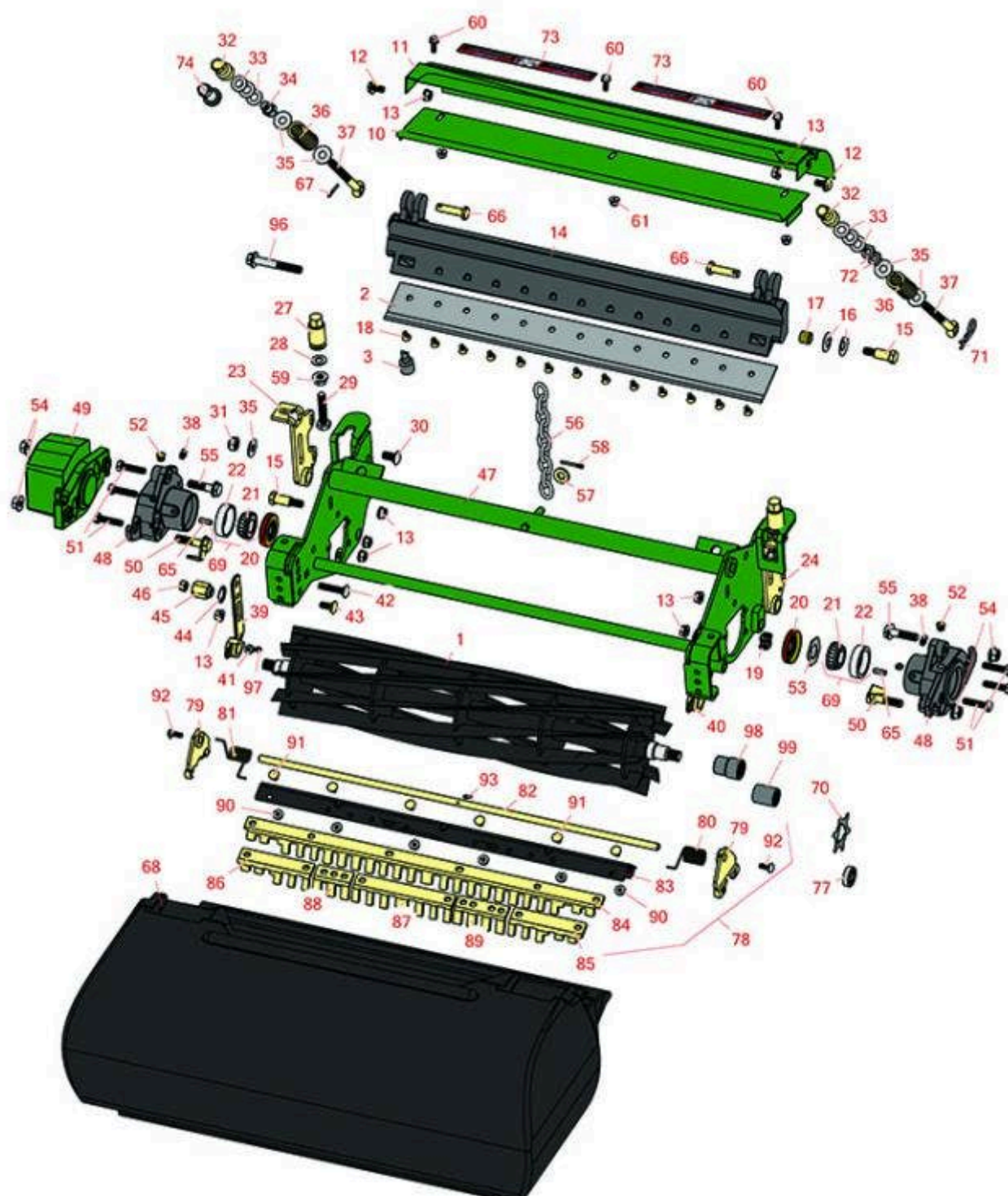




# Replaces John Deere 2500A Riding Greens Mower Parts

Cutting Unit - Serial up to 030000  
Reel & Bedknife



All original equipment manufacturers names and part numbers are used for identification purposes only, and we are in no way implying that our products are original equipment parts. Prices subject to change without notice.



# Replaces John Deere 2500A Riding Greens Mower Parts

Cutting Unit - Serial up to 030000  
Reel & Bedknife



Item No	R&R Part No.	OEM Part No.	Description	Qty Req	Order Quantity
---------	--------------	--------------	-------------	---------	----------------

## R&R Reels, Lifetime Guaranteed

1	<b>R101274</b>	AMT2885, AMT538	Reel - 11 Blade - External Spline	1	
---	----------------	--------------------	-----------------------------------	---	--

*Detail Description: R&R Reel blades are manufactured from high carbon-boron alloy steel and then hardened to RC46-49 to match the temper of our bedknives and original equipment bedknives. All R&R Reels are cylindrically ground on bearing surfaces and then relief ground. Reels are then precision computer balanced for extended bearing and reel life. R&R Products Reels are guaranteed against defects in material and workmanship for the life of the reel under normal use.:*

1	<b>RAET10826</b>	AET10826, AET11347	Reel - 9 Blade - External Spline	1	
---	------------------	-----------------------	----------------------------------	---	--

*Detail Description: R&R Reel blades are expertly crafted from premium high carbon-boron alloy steel, heat-treated to perfectly complement both R&R and OEM bedknives. Each reel undergoes precision cylindrical grinding on bearing surfaces, followed by relief grinding for optimal performance. Advanced computer balancing ensures extended reel and bearing life. Backed by our lifetime guarantee against defects in materials and craftsmanship under normal use, R&R Reels deliver unmatched durability and cutting precision you can trust.:*

1	<b>RAET11237</b>	AET11237, AMT2883	Reel - 7 Blade Heavy Duty - External Spline	1	
---	------------------	----------------------	---	---	--

*Detail Description: R&R Reel blades are expertly crafted from premium high carbon-boron alloy steel, heat-treated to perfectly complement both R&R and OEM bedknives. Each reel undergoes precision cylindrical grinding on bearing surfaces, followed by relief grinding for optimal performance. Advanced computer balancing ensures extended reel and bearing life. Backed by our lifetime guarantee against defects in materials and craftsmanship under normal use, R&R Reels deliver unmatched durability and cutting precision you can trust.:*

## R&R Bedknives, Lifetime Guaranteed

2	<b>RET17767</b>	ET17767, UC23562	Bedknife - High Cut 5/16	1	
---	-----------------	---------------------	--------------------------	---	--

*Detail Description: R&R Bedknives are manufactured from high carbon-boron alloy steel and then hardened to RC46-49 to match the temper of our reel blades and original equipment reels. Bedknives are surface ground on the top and front edge and straightened three times before being packaged with oil for rust prevention. All R&R Bedknives now have an increased front edge grind for added life. All R&R Bedknives are guaranteed against defects in material and workmanship under normal use for the life of the part.:*

2	<b>RET17532</b>	ET11066, ET17532	Bedknife - Fairway .189 Min	1	
---	-----------------	---------------------	-----------------------------	---	--

All original equipment manufacturers names and part numbers are used for identification purposes only, and we are in no way implying that our products are original equipment parts. Prices subject to change without notice.



# Replaces John Deere 2500A Riding Greens Mower Parts

Cutting Unit - Serial up to 030000  
Reel & Bedknife



Item No	R&R Part No.	OEM Part No.	Description	Qty Req	Order Quantity
---------	--------------	--------------	-------------	---------	----------------

*Detail Description: R&R Bedknives are manufactured from high carbon-boron alloy steel and then hardened to RC46-49 to match the temper of our reel blades and original equipment reels. Bedknives are surface ground on the top and front edge and straightened three times before being packaged with oil for rust prevention. All R&R Bedknives now have an increased front edge grind for added life. All R&R Bedknives are guaranteed against defects in material and workmanship under normal use for the life of the part.:*

2	<b>RET17533</b>	ET14402, ET17533, ET17767, MT4869, MT7351, UC18873	Bedknife - 22in Standard- .126 Min. HOC	1	
---	-----------------	---	---	---	--

*Detail Description: R&R Bedknives are manufactured from high carbon-boron alloy steel and then hardened to RC46-49 to match the temper of our reel blades and original equipment reels. Bedknives are surface ground on the top and front edge and straightened three times before being packaged with oil for rust prevention. All R&R Bedknives now have an increased front edge grind for added life. All R&R Bedknives are guaranteed against defects in material and workmanship under normal use for the life of the part.:*

2	<b>RET17534</b>	ET17534	Bedknife - 22in Tounament- .098 Min HOC	1	
---	-----------------	---------	---	---	--

*Detail Description: R&R Bedknives are manufactured from high carbon-boron alloy steel and then hardened to RC46-49 to match the temper of our reel blades and original equipment reels. Bedknives are surface ground on the top and front edge and straightened three times before being packaged with oil for rust prevention. All R&R Bedknives now have an increased front edge grind for added life. All R&R Bedknives are guaranteed against defects in material and workmanship under normal use for the life of the part.:*

2	<b>RMT7351</b>	ET17489, MT7351, UC19154, UC28163	Bedknife - 22in Lo-Cut .079 Min. HOC	1	
---	----------------	--	--------------------------------------	---	--

*Detail Description: R&R Bedknives are manufactured from high carbon-boron alloy steel and then hardened to RC46-49 to match the temper of our reel blades and original equipment reels. Bedknives are surface ground on the top and front edge and straightened three times before being packaged with oil for rust prevention. All R&R Bedknives now have an increased front edge grind for added life. All R&R Bedknives are guaranteed against defects in material and workmanship under normal use for the life of the part.:*

**R&R Razor Tool Steel Bedknives, Lifetime Guaranteed**

All original equipment manufacturers names and part numbers are used for identification purposes only, and we are in no way implying that our products are original equipment parts. Prices subject to change without notice.



# Replaces John Deere 2500A Riding Greens Mower Parts

Cutting Unit - Serial up to 030000  
Reel & Bedknife



Item No	R&R Part No.	OEM Part No.	Description	Qty Req	Order Quantity
---------	--------------	--------------	-------------	---------	----------------

2	R130130		Bedknife - Razor Tool Steel - 22 High Cut	1	
---	---------	--	---	---	--

*Detail Description: R&R Razor bedknives are manufactured from premium alloy tool steel steel and then hardened to RC48-51 to match the temper of our Razor reel blades and original equipment premium series reels. Bedknives are surface ground on the top and front edge and specially packaged for rust prevention. All R&R Bedknives now have an increased front edge grind for added life. All R&R Bedknives are guaranteed against defects in material and workmanship under normal use for the life of the part. You can expect up to double the life over standard bedknives.:*

2	R130116	MT4846, UC18877	Bedknife - Razor Tool Steel - 22 Tournament Cut	1	
---	---------	--------------------	---	---	--

*Detail Description: R&R Razor bedknives are manufactured from premium alloy tool steel steel and then hardened to RC48-51 to match the temper of our Razor reel blades and original equipment premium series reels. Bedknives are surface ground on the top and front edge and specially packaged for rust prevention. All R&R Bedknives now have an increased front edge grind for added life. All R&R Bedknives are guaranteed against defects in material and workmanship under normal use for the life of the part. You can expect up to double the life over standard bedknives.:*

2	R130115		Bedknife - Razor Tool Steel - 22 Micro Cut	1	
---	---------	--	--	---	--

*Detail Description: R&R Razor bedknives are manufactured from premium alloy tool steel steel and then hardened to RC48-51 to match the temper of our Razor reel blades and original equipment premium series reels. Bedknives are surface ground on the top and front edge and specially packaged for rust prevention. All R&R Bedknives now have an increased front edge grind for added life. All R&R Bedknives are guaranteed against defects in material and workmanship under normal use for the life of the part. You can expect up to double the life over standard bedknives.:*

## Service Tools

3	R101278T		Bedknife Screw Driver Tool	0	
---	----------	--	----------------------------	---	--

*Tech Note: Easily install and remove bed knife screws with the help of a ratchet. Tool manufactured with hardened alloy steel.:*

*Detail Description: Easily install and remove bed knife screws with the help of a ratchet. Tool manufactured with hardened alloy steel.:*

## Other Parts Available

10	RMT2127	MT2127	Shield - Grass	1	
----	---------	--------	----------------	---	--

All original equipment manufacturers names and part numbers are used for identification purposes only, and we are in no way implying that our products are original equipment parts. Prices subject to change without notice.



# Replaces John Deere 2500A Riding Greens Mower Parts

Cutting Unit - Serial up to 030000  
Reel & Bedknife



Item No	R&R Part No.	OEM Part No.	Description	Qty Req	Order Quantity
11	<b>RAMT2495</b>	AMT2495, AMT554	Shield - Grass	1	
12	<b>R19M7865</b>	19M7865	Bolt - Hex Washer M8 x 16	2	
13	<b>R14M7298</b>	14M7298	Nut - 8mm x 1.25 Flanged	10	
14	<b>RMT2694</b>	MT2694	Bed Bar	1	
15	<b>RMT3016</b>	MT3016	Bolt - Bed Bar	2	
16	<b>RN168012</b>	N168012	Washer - Spring	4	
17	<b>RB30499</b>	B30499	Bushing - Bed Bar	2	
18	<b>R101278</b>	21M7194	Screw - Bedknife	13	
19	<b>RET14592</b>	ET14592	Spring - Reel Bearing	1	
20	<b>RET14566</b>	ET14566	Seal - Reel	2	
21	<b>R254-78</b>	JD8188	Tapered Bearing Cone	2	
22	<b>R254-79</b>	JD8226	Cup - Bearing	2	
<i>Detail Description: Use R254-79M installation mandrel to properly install race.:</i>					
23	<b>RAMT5112</b>	AMT5112	Bracket - Roller RH Rear	1	
24	<b>RAMT5113</b>	AMT5113	Bracket - Roller LH Rear	1	
27	<b>RMT6483</b>	MT6483	Nut - Adjusting Rear Roller	2	
28	<b>R453011</b>	24M7096	Washer - Flat 3/8 SAE Y/Zinc	2	
29	<b>R19M7383</b>	19M7383	Bolt - Rear Roller Adj 55 mm Long	2	
29	<b>R19M7385</b>	19M7385	Bolt - Rear Roller Adj 70mm Long	2	
30	<b>R03M7307</b>	03M7307	Bolt - Carriage M10	2	
31	<b>R14M7517</b>	14M7517	Locknut - 10mm x 1.5 ESNA	2	

All original equipment manufacturers names and part numbers are used for identification purposes only, and we are in no way implying that our products are original equipment parts. Prices subject to change without notice.





# Replaces John Deere 2500A Riding Greens Mower Parts

Cutting Unit - Serial up to 030000  
Reel & Bedknife



Item No	R&R Part No.	OEM Part No.	Description	Qty Req	Order Quantity
32	RMT4991	MT4991	Nut - Adjusting Bedknife	2	
33	RET16679	ET16679	Washer - Spring	6	
34	RMT6486	MT6486	Nut - Bed Bar Adjusting	2	
35	R24H1307	24H1307	Washer - Flat 13/32 x 1 x 1/16	4	
36	RET11070	ET11070	Spring - Bed Bar	2	
37	RMT3074	MT3074	Eyebolt - Bed Bar	2	
38	R302-5	JD7797, JD7842, JD7844	Fitting - Grease	2	
39	RMT3015	MT3015	Bracket - RH - Extended	1	
<i>Tech Note: Use with 7 &amp; 9 Blade Reel:</i>					
40	RMT3072	MT3072	Bracket - LH - Extended	1	
<i>Tech Note: Use with 7 &amp; 9 Blade Reel:</i>					
39	RMT7259	MT7259	Bracket - RH	1	
<i>Tech Note: Use with 11 Blade Reel:</i>					
40	RMT7260	MT7260	Bracket - LH	1	
<i>Tech Note: Use with 11 Blade Reel:</i>					
41	R3219-1	14H860	Nut - 1/4-28	2	
42	R03M7188	03M7188	Bolt - Carriage M8 x 40	1	
43	R03M7184	03M7184	Bolt - Carriage M8	3	
44	R12M7052	12M7052	Washer - Rib Lock	1	
45	RMT3881	MT3881	Nut - Eccentric Front Roller Bkt	1	
46	R14M7166	14M7166	Locknut - 8mm x 1.25 ESNA	1	

All original equipment manufacturers names and part numbers are used for identification purposes only, and we are in no way implying that our products are original equipment parts. Prices subject to change without notice.



# Replaces John Deere 2500A Riding Greens Mower Parts

Cutting Unit - Serial up to 030000  
Reel & Bedknife



Item No	R&R Part No.	OEM Part No.	Description	Qty Req	Order Quantity
47	<b>R130121</b>	AMT1415	Frame - Cutting Unit	1	
48	<b>RMT7294</b>	MT2647, MT7294	Housing - Reel	2	
49	<b>RMT6476</b>	MT6476	Counterweight	1	
50	<b>RAMT2261</b>	AMT2261	Kit - Bolt w/Clip	2	
51	<b>R19M8008</b>	19M8008	Bolt - Hex HD M8-1.25 x 35	6	
52	<b>R170714</b>	E14814	Fitting - Pressure Relief	2	
53	<b>RET16704</b>	ET16704	Retainer	1	
54	<b>RH135891</b>	H135891	Locknut - 10mm x 1.5 Flanged 10.9	4	
<i>Detail Description: High Strength:</i>					
55	<b>R19M7804</b>	19M7804	Bolt - Flanged Hex M10-1.5 x 40	2	
56	<b>RAMT1479</b>	AMT1479	Chain - Link	1	
57	<b>R24H1682</b>	24H1682	Washer - 13/32 x 7/8 x 1/8	1	
58	<b>R460028</b>	11M7059, 460028	Pin - Cotter 1/8 x 1	1	
59	<b>R14M7296</b>	14M7296	Nut - 10mm x 1.5 Flanged	2	
60	<b>R19M7775</b>	19M7775	Bolt - Flanged Hex M6-1.0 x 16	3	
61	<b>R14M7397</b>	14M7397, 14M7463	Locknut - 6mm x 1.0 ESNA Flanged	3	
65	<b>RR30587</b>	30587, R30587	Pin - Dowell 1/4 Dia. x .75	4	
66	<b>R45M7060</b>	45M7060	Pin	2	
67	<b>R11M7012</b>	11M7012	Pin - Cotter 1/8 x 5/8	2	

All original equipment manufacturers names and part numbers are used for identification purposes only, and we are in no way implying that our products are original equipment parts. Prices subject to change without notice.



# Replaces John Deere 2500A Riding Greens Mower Parts

Cutting Unit - Serial up to 030000  
Reel & Bedknife



Item No	R&R Part No.	OEM Part No.	Description	Qty Req	Order Quantity
68	<b>RMT6671</b>	MT6671	Grass Basket	1	
<i>Detail Description: &lt;BR&gt;Please note: Due to excessive air freight charges, this item will be shipped ground freight.:</i>					
69	<b>R500534</b>		Bearing - with Cup	0	
<i>Detail Description: Kit includes: 1 ea R254-78- Bearing Cone &amp; R254-79 Bearing Cone:</i>					
70	<b>RET14707</b>	ET14707	Verti-Cut Blade - .025 x 2.375	0	
70	<b>RET14707C</b>		Verti-Cut Blade - .025 x 2.375 Carbide Tipped	0	
71	<b>R130122</b>		Clip - Hitch Pin	2	
72	<b>R130123</b>	130123	Nut - Hex 10mm x 1.0	4	
73	<b>RMT6517</b>	MT6517	Label - Warning	2	
74	<b>RMT6990</b>	MT6990	Nut - Adjusting	2	
77	<b>RET16026</b>	ET16026	Bearing	2	
78	<b>R500559</b>	BM18680, MT18680	Scraper Kit - Grooved Roller	1	
<i>Detail Description: Fits John Deere AET11262 &amp; AMT2966 Grooved Roller Only:</i>					
79	<b>RMT2407</b>	MT2407	Bracket - Roller Scraper	2	
80	<b>RET17629</b>	ET17629	Spring - Torsion LH	1	
81	<b>RET17630</b>	ET17630	Spring - Torsion RH	1	
82	<b>RET17757</b>	ET11757, ET17757	Pin - Scraper	1	
83	<b>R500571</b>	MT2369	Bar - Scraper	1	
84	<b>R500558</b>		Scraper - Grooved Roller	1	
<i>Detail Description: 1 Piece Scraper fits OEM AET11262 &amp; AMT2966 Grooved Roller:</i>					

All original equipment manufacturers names and part numbers are used for identification purposes only, and we are in no way implying that our products are original equipment parts. Prices subject to change without notice.





# Replaces John Deere 2500A Riding Greens Mower Parts

*Cutting Unit - Serial up to 030000  
Reel & Bedknife*



Item No	R&R Part No.	OEM Part No.	Description	Qty Req	Order Quantity
85	<b>RMT5159</b>	MT5159	Scraper - Fits J.D. LH End	1	
86	<b>RMT5158</b>	MT5158	Scraper - Fits J.D. RH End	1	
87	<b>RMT2340</b>	MT2340	Scraper - Fits J.D. Center	1	
88	<b>RMT2342</b>	MT2342	Section - Grooved Scraper 3 Tooth	1	
89	<b>RMT2341</b>	MT2341	Section - Grooved Scraper 4 Tooth	1	
90	<b>R14M7303</b>	14M7303	Nut - 6mm x 1.0 Flanged	6	
91	<b>R03M7191</b>	03M7191	Bolt - Carriage M10 x 25	6	
92	<b>R03M7221</b>	03M7221	Bolt - Carriage M6 x 16	2	
93	<b>R34M7010</b>	34M7010	Pin - Spring	1	
96	<b>R19M7809</b>	19M7809	Screw	2	
97	<b>R22H1004</b>	19H3003	Screw - Set 1/4-28 x 1/2	2	
98	<b>RMT7067</b>	MT7067	Coupling - Splined 9/11 Tooth	1	
99	<b>RTCA12581</b>	TCA12581	Coupling - Reel 11 Tooth	1	

All original equipment manufacturers names and part numbers are used for identification purposes only, and we are in no way implying that our products are original equipment parts. Prices subject to change without notice.