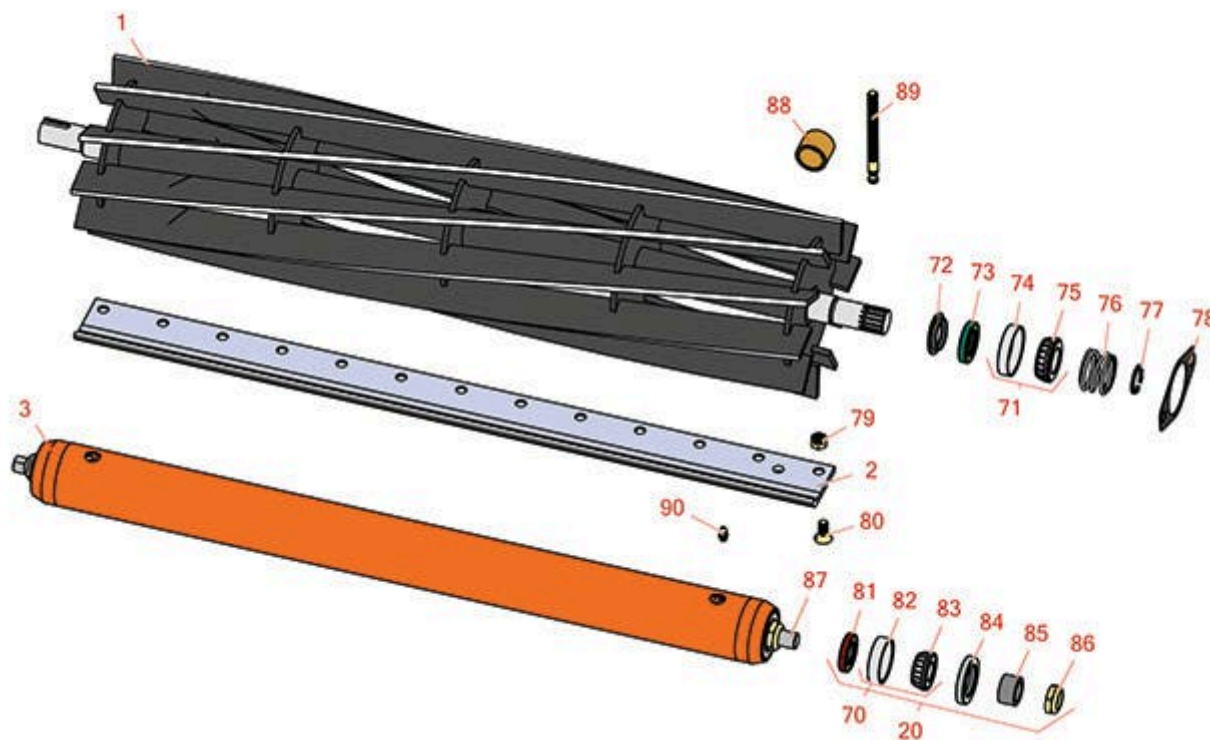




Replaces Jacobsen Tri-King 1884D Parts

Cutting Unit
Reel & Bedknife



All original equipment manufacturers names and part numbers are used for identification purposes only, and we are in no way implying that our products are original equipment parts. Prices subject to change without notice.



Replaces Jacobsen Tri-King 1884D Parts

Cutting Unit
Reel & Bedknife



Item No	R&R Part No.	OEM Part No.	Description	Qty Req	Order Quantity
---------	--------------	--------------	-------------	---------	----------------

R&R Reels, Lifetime Guaranteed

1	R503359	503359	Reel - 5 Blade LH/Center - 30 in	2	
---	----------------	--------	----------------------------------	---	--

Detail Description: R&R Reel blades are expertly crafted from premium high carbon-boron alloy steel, heat-treated to perfectly complement both R&R and OEM bedknives. Each reel undergoes precision cylindrical grinding on bearing surfaces, followed by relief grinding for optimal performance. Advanced computer balancing ensures extended reel and bearing life. Backed by our lifetime guarantee against defects in materials and craftsmanship under normal use, R&R Reels deliver unmatched durability and cutting precision you can trust.:

1	R503360	503360	Reel - 5 Blade RH 30 in	1	
---	----------------	--------	-------------------------	---	--

Detail Description: R&R Reel blades are expertly crafted from premium high carbon-boron alloy steel, heat-treated to perfectly complement both R&R and OEM bedknives. Each reel undergoes precision cylindrical grinding on bearing surfaces, followed by relief grinding for optimal performance. Advanced computer balancing ensures extended reel and bearing life. Backed by our lifetime guarantee against defects in materials and craftsmanship under normal use, R&R Reels deliver unmatched durability and cutting precision you can trust.:

1	R503361	503361	Reel - 10 Blade LH/Center - 30 in	2	
---	----------------	--------	-----------------------------------	---	--

Detail Description: R&R Reel blades are expertly crafted from premium high carbon-boron alloy steel, heat-treated to perfectly complement both R&R and OEM bedknives. Each reel undergoes precision cylindrical grinding on bearing surfaces, followed by relief grinding for optimal performance. Advanced computer balancing ensures extended reel and bearing life. Backed by our lifetime guarantee against defects in materials and craftsmanship under normal use, R&R Reels deliver unmatched durability and cutting precision you can trust.:

1	R503362	503362	Reel - 10 Blade RH - 30 in	1	
---	----------------	--------	----------------------------	---	--

Detail Description: R&R Reel blades are expertly crafted from premium high carbon-boron alloy steel, heat-treated to perfectly complement both R&R and OEM bedknives. Each reel undergoes precision cylindrical grinding on bearing surfaces, followed by relief grinding for optimal performance. Advanced computer balancing ensures extended reel and bearing life. Backed by our lifetime guarantee against defects in materials and craftsmanship under normal use, R&R Reels deliver unmatched durability and cutting precision you can trust.:

R&R Bedknives, Lifetime Guaranteed

2	R503550	331692, 503363, 503550	Bedknife - 30 in (13 Hole)	1	
---	----------------	------------------------------	----------------------------	---	--

All original equipment manufacturers names and part numbers are used for identification purposes only, and we are in no way implying that our products are original equipment parts. Prices subject to change without notice.



Replaces Jacobsen Tri-King 1884D Parts

Cutting Unit
Reel & Bedknife



Item No	R&R Part No.	OEM Part No.	Description	Qty Req	Order Quantity
---------	--------------	--------------	-------------	---------	----------------

Detail Description: R&R Bedknives are manufactured from high carbon-boron alloy steel and then hardened to RC46-49 to match the temper of our reel blades and original equipment reels. Bedknives are surface ground on the top and front edge and straightened three times before being packaged with oil for rust prevention. All R&R Bedknives now have an increased front edge grind for added life. All R&R Bedknives are guaranteed against defects in material and workmanship under normal use for the life of the part.:

R&R Rollers

3	R104130	116933, 132640	Roller - Smooth Tubular Steel	1
---	----------------	-------------------	-------------------------------	---

Detail Description: Constructed with a through shaft, this heavy duty roller uses greasable tapered bearings for extended life.:

Overhaul Kits

20	R100138		Overhaul Kit - Roller	0
----	----------------	--	-----------------------	---

Detail Description: Includes 2 ea.: R3296-15 Locknuts, R253-152 Seals, R253-117 Seals, R5-4038 Wear Sleeves, R254-78 Bearings, R254-79 Bearing Cups, & R302-5 Grease Fittings:

Other Parts Available

70	R500534	500534, R500534	Bearing - with Cup	0
----	----------------	--------------------	--------------------	---

Detail Description: Kit includes: 1 ea R254-78- Bearing Cone & R254-79 Bearing Cone:

71	R500596	500596	Tapered Bearing Set - Cup and Cone	2
----	----------------	--------	------------------------------------	---

72	R364275	364275	Disc - Reel Shaft	2
----	----------------	--------	-------------------	---

73	R337593	3000983, 337593	Seal	2
----	----------------	--------------------	------	---

74	R254-72	313456	Cup - Bearing	2
----	----------------	--------	---------------	---

75	R254-94	313089	Tapered Bearing Cone	2
----	----------------	--------	----------------------	---

76	R364148	364148	Spring - Reel Brg Tension	1
----	----------------	--------	---------------------------	---

77	R458039	458039	Ring - Retaining	1
----	----------------	--------	------------------	---

All original equipment manufacturers names and part numbers are used for identification purposes only, and we are in no way implying that our products are original equipment parts. Prices subject to change without notice.



Replaces Jacobsen Tri-King 1884D Parts

Cutting Unit
Reel & Bedknife



Item No	R&R Part No.	OEM Part No.	Description	Qty Req	Order Quantity
78	R364777	364777	Gasket - Motor End	1	
79	R101271	445684	Nut - Bedknife	13	
80	R101270	402698, 403757	Screw - Bedknife 3/8-24 x 13/16	13	
81	R253-152	3001656	Seal - Inner Roller	2	
82	R254-79	254-79, 4121175	Cup - Bearing	2	
<i>Detail Description: Use R254-79M installation mandrel to properly install race.:</i>					
83	R254-78	254-78, 385174, 4121174, 4135152	Tapered Bearing Cone	2	
84	R253-117	253-117, 3004882	Seal - Outer Triple Lip	2	
85	R5-4038	5-4038	Sleeve - Wear Reel Shaft	2	
86	R3296-15	3296-15, 367029, 444742	Locknut - 3/4-16 Nylon Jam	2	
87	R1013820		Shaft - 1 SS Roller 2 Pc	1	
88	R364140	364140	Bushing	2	
<i>Tech Note: Pull Frame:</i>					
89	R364265	364265	Screw - Adjusting Reel 3/8-16 Thd	2	
90	R302-5	302-5, 471214, 471223, 471226	Fitting - Grease	2	

All original equipment manufacturers names and part numbers are used for identification purposes only, and we are in no way implying that our products are original equipment parts. Prices subject to change without notice.