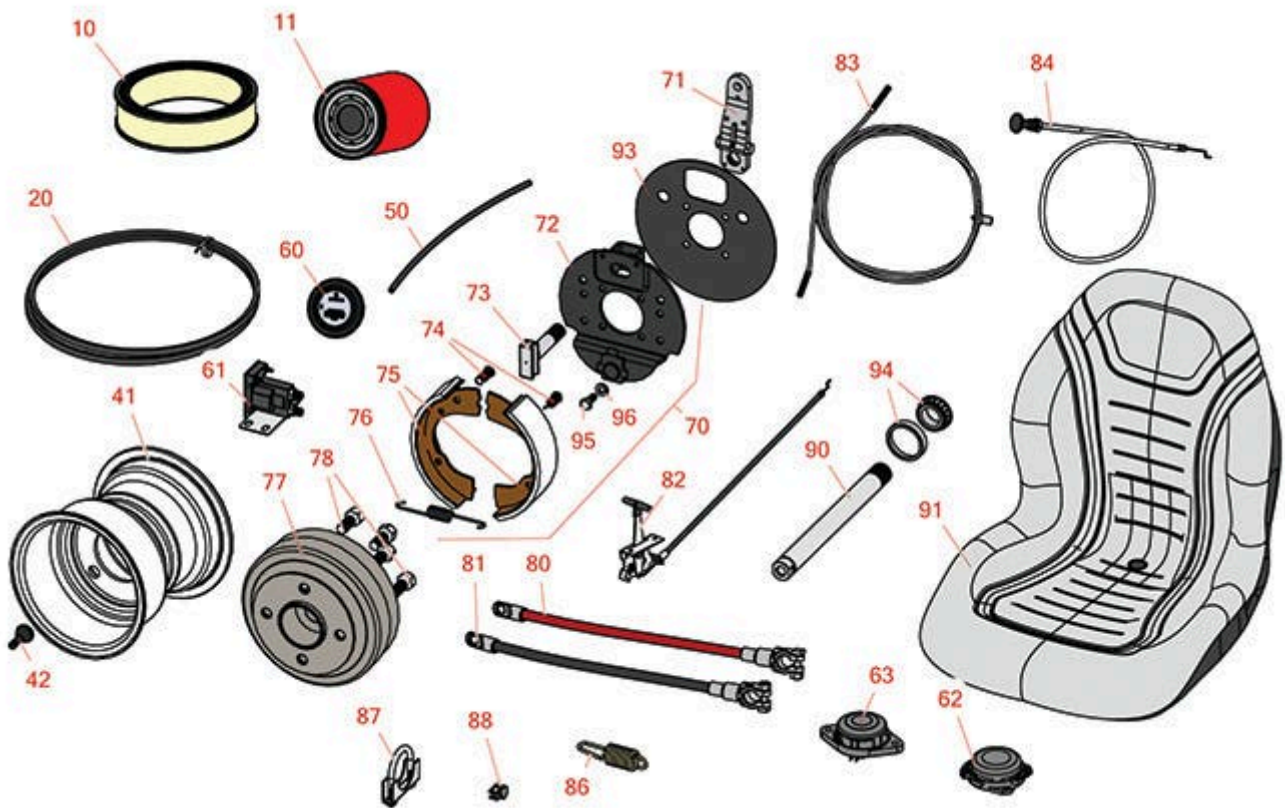




Replaces Jacobsen Tri-King 1471 Parts

Traction Unit
Traction Unit



All original equipment manufacturers names and part numbers are used for identification purposes only, and we are in no way implying that our products are original equipment parts. Prices subject to change without notice.



Replaces Jacobsen Tri-King 1471 Parts

Traction Unit

Traction Unit



Item No	R&R Part No.	OEM Part No.	Description	Qty Req	Order Quantity
---------	--------------	--------------	-------------	---------	----------------

Filters

10	R4708301	4708301	Air Filter	1	
11	R86-3010	108046, 281370, 522972, 549587, 549597, 925023	Baldwin Hydraulic Oil Filter	1	

Belts

20	R390707	390707	Belt - Drive Set/2	1	
41	R121704	121704	Wheel - with Valve Stem	3	
42	R232-27	232-27, 360111	Stem - Valve w/ Cap	3	

Hoses

50	R554751	554751	Hose - Fuel 1/4 in 10 ft	1	
----	----------------	--------	--------------------------	---	--

Gauges & Controls

60	R162723	162723, 358825	Meter - Hour	1	
61	R131905	126070, 131905	Solenoid - Starter	1	
62	R151541		Delta Seat Switch - Twist Mount 1 Pole Normally Open	1	
63	R92-6282	554390	Switch - Kill - Seat	1	

Other Parts Available

70	R501307	501307	Brake Assy	2	
----	----------------	--------	------------	---	--

Tech Note: Includes: 2ea: R353868 Spring; 1 ea: R130191 Plate, R353869 Spring, R501150 Shoes, R546516 Camshaft & R554526 Lever:

All original equipment manufacturers names and part numbers are used for identification purposes only, and we are in no way implying that our products are original equipment parts. Prices subject to change without notice.



Replaces Jacobsen Tri-King 1471 Parts

Traction Unit

Traction Unit



Item No	R&R Part No.	OEM Part No.	Description	Qty Req	Order Quantity
71	R554526	501151, 554526	Lever - Brake	2	
72	R130191	130191	Plate - Brake Support	2	
73	R546516	546516	Camshaft - Brake	2	
74	R353868	353868	Spring - Shoe Hold Down	4	
75	R501150	501150	Shoe - Brake Set / 2	2	
76	R353869	353869, 555714	Spring - Shoe Return	2	
77	R207461	207461	Drum - Brake	2	
78	R353914	353914	Bolt - Wheel	8	
80	R364162	364162	Cable - Battery Positive	1	
81	R364006	364006	Cable - Battery Negative	1	
82	R338381	338381	Control - Throttle	1	
83	R364226	364226	Cable - Steering	1	
83	R1004293	1004293	Cable - Steering - Heavy Duty	1	
84	R131851	131851	Control - Choke	1	
86	R364164	364164	Spring	1	
87	R348856	348856	Clamp - Muffler - 1-1/2	1	
88	R345666	345666	Clamp	2	
90	R337358	337358	Axle - Steering	1	
91	RMXB200GY	1001774, 66172	Milsco Seat XB200 - Grey	1	

Tech Note: This seat will not accept seat belts:

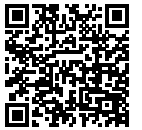
All original equipment manufacturers names and part numbers are used for identification purposes only, and we are in no way implying that our products are original equipment parts. Prices subject to change without notice.



Replaces Jacobsen Tri-King 1471 Parts

Traction Unit

Traction Unit



Item No	R&R Part No.	OEM Part No.	Description	Qty Req	Order Quantity
93	R390742	390742	Shield	2	
94	R500596	500596	Tapered Bearing Set - Cup and Cone	2	
95	R400184	400184, 400194	Screw - 5/16-18 x 3/4 Hex	8	
96	R446136	446134, 446136	Washer - Lock 5/16 Zinc	10	

All original equipment manufacturers names and part numbers are used for identification purposes only, and we are in no way implying that our products are original equipment parts. Prices subject to change without notice.