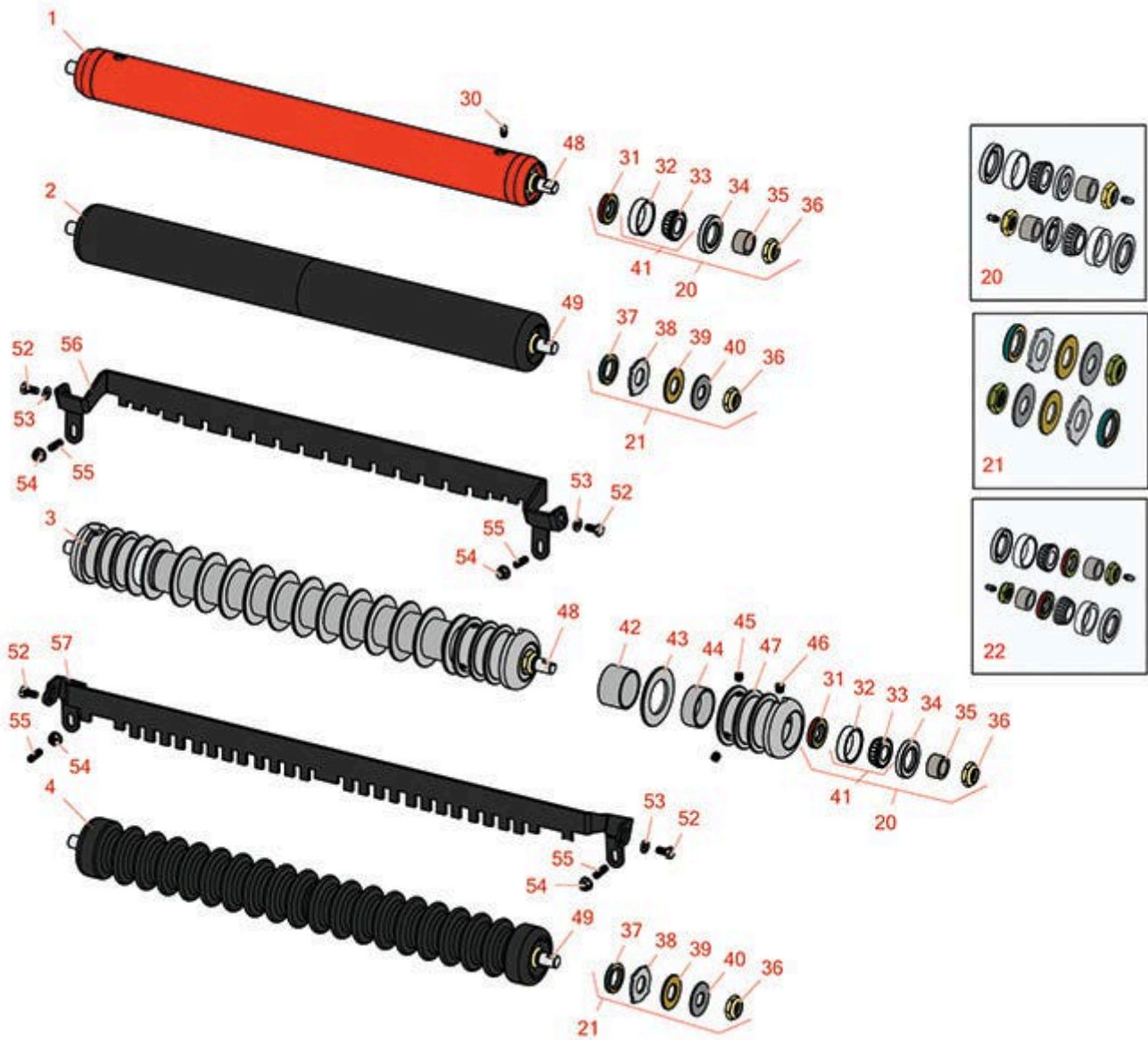




# Replaces Jacobsen Tri-King 1471 Parts

26" Belt Drive Cutting Unit  
Rollers



All original equipment manufacturers names and part numbers are used for identification purposes only, and we are in no way implying that our products are original equipment parts. Prices subject to change without notice.



# Replaces Jacobsen Tri-King 1471 Parts

26" Belt Drive Cutting Unit  
Rollers



| Item No | R&R Part No. | OEM Part No. | Description | Qty Req | Order Quantity |
|---------|--------------|--------------|-------------|---------|----------------|
|---------|--------------|--------------|-------------|---------|----------------|

## R&R Rollers

|   |                |                              |                               |   |  |
|---|----------------|------------------------------|-------------------------------|---|--|
| 1 | <b>R104125</b> | 116940,<br>131863,<br>132639 | Roller - Smooth Tubular Steel | 1 |  |
|---|----------------|------------------------------|-------------------------------|---|--|

*Tech Note: Fits Front and Rear. Constructed with a through shaft, this heavy duty roller uses greasable tapered bearings for extended life.:*

|   |                 |  |                                   |   |  |
|---|-----------------|--|-----------------------------------|---|--|
| 2 | <b>R1013630</b> |  | Roller - Smooth UHMW Polyethylene | 1 |  |
|---|-----------------|--|-----------------------------------|---|--|

*Tech Note: Fits Front and Rear. Machined from solid UHMW, this low maintenance roller uses a 1" solid stainless steel shaft and requires no grease. UHMW material prevents build-up of debris.:*

|   |                |                   |  |   |  |
|---|----------------|-------------------|--|---|--|
| 3 | <b>R104100</b> | 116906,<br>123266 | Roller - Grooved Repairable Steel - 26 | 1 |  |
|---|----------------|-------------------|--|---|--|

*Tech Note: Fits Front. Constructed with a through shaft and greasable ball bearings, this roller can be repaired by unscrewing the ends and replacing the series of washers and spacers.:*

|   |                 |        |                                    |   |  |
|---|-----------------|--------|------------------------------------|---|--|
| 4 | <b>R1013620</b> | 123266 | Roller - Grooved UHMW Polyethylene | 1 |  |
|---|-----------------|--------|------------------------------------|---|--|

*Tech Note: Fits Front. Machined from solid UHMW, this low maintenance roller rotates around a 1" solid stainless steel shaft and requires no bearings or grease. Patented groove design and smooth UHMW material prevents build-up of debris.:*

## Overhaul Kits

|    |                |  |                       |   |  |
|----|----------------|--|-----------------------|---|--|
| 20 | <b>R100137</b> |  | Overhaul Kit - Roller | 0 |  |
|----|----------------|--|-----------------------|---|--|

*Tech Note: Includes 2 ea.: R3296-15 Locknuts, R302-5 Grease Fittings, R253-122 Seals, R253-117 Seals, R5-4038 Wear Sleeves, R254-78 Bearings & R254-79 Bearing Cups:*

|    |                |  |                                 |   |  |
|----|----------------|--|---------------------------------|---|--|
| 21 | <b>R101399</b> |  | Overhaul Kit - UHMW 2 Pc Roller | 1 |  |
|----|----------------|--|---------------------------------|---|--|

*Tech Note: Fits all R&R 2-1/2" - 3-1/2" Dia. Black UHMW Plastic Rollers that do not use ball bearings.. Includes 2 ea.: R1503230 Star Washers, R1503470 Seals, R150333 Thrust Washers, R3296-15 Locknuts, R1503471 Bronze Thrust Washers:*

|    |                |  |                       |   |  |
|----|----------------|--|-----------------------|---|--|
| 22 | <b>R100138</b> |  | Overhaul Kit - Roller | 1 |  |
|----|----------------|--|-----------------------|---|--|

*Tech Note: Includes 2 ea.: R3296-15 Locknuts, R253-152 Seals, R253-117 Seals, R5-4038 Wear Sleeves, R254-78 Bearings, R254-79 Bearing Cups, & R302-5 Grease Fittings:*

All original equipment manufacturers names and part numbers are used for identification purposes only, and we are in no way implying that our products are original equipment parts. Prices subject to change without notice.



# Replaces Jacobsen Tri-King 1471 Parts

26" Belt Drive Cutting Unit  
Rollers



| Item No | R&R Part No. | OEM Part No. | Description | Qty Req | Order Quantity |
|---------|--------------|--------------|-------------|---------|----------------|
|---------|--------------|--------------|-------------|---------|----------------|

## Other Parts Available

|  |                 |   |                               |    |  |
|--|-----------------|---|-------------------------------|----|--|
| 30   | <b>R302-5</b>   | 302-5,<br>471214,<br>471223,<br>471226    | Fitting - Grease              | 4  |  |
| 31   | <b>R253-122</b> |   | Seal                          | 2  |  |
| 32   | <b>R254-79</b>  | 254-79,<br>4121175                        | Cup - Bearing                 | 2  |  |
| <i>Tech Note: Use R254-79M installation mandrel to properly install race.:</i> |                 |   |                               |    |  |
| 33   | <b>R254-78</b>  | 254-78,<br>385174,<br>4121174,<br>4135152 | Tapered Bearing Cone          | 2  |  |
| 34   | <b>R253-117</b> | 253-117,<br>3004882                       | Seal - Outer Triple Lip       | 2  |  |
| 35   | <b>R5-4038</b>  | 5-4038                                    | Sleeve - Wear Reel Shaft      | 2  |  |
| 36   | <b>R3296-15</b> | 3296-15,<br>367029,<br>444742             | Locknut - 3/4-16 Nylon Jam    | 2  |  |
| 37   | <b>R1503470</b> |   | Seal - Inner Wiper            | 2  |  |
| 38   | <b>R1503230</b> |   | Washer - Thrust Outer Keyed   | 2  |  |
| 39   | <b>R1503471</b> |   | Washer - Thrust SAE660 Bronze | 2  |  |
| 40   | <b>R150333</b>  |   | Washer - Flat Keyed Outer SS  | 2  |  |
| 41   | <b>R500534</b>  | 500534,<br>R500534                        | Bearing - with Cup            | 2  |  |
| 42   | <b>R150676</b>  | 150676                                    | Spacer - 2-3/4 Dia x 1-1/4 L  | 12 |  |
| 43   | <b>R150673</b>  | 150673                                    | Washer - 3 Repairable Roller  | 13 |  |
| 44   | <b>R150678</b>  |   | Spacer - Grooved Roller 3/4   | 2  |  |

All original equipment manufacturers names and part numbers are used for identification purposes only, and we are in no way implying that our products are original equipment parts. Prices subject to change without notice.



# Replaces Jacobsen Tri-King 1471 Parts

26" Belt Drive Cutting Unit  
Rollers



| Item No                                     | R&R Part No.    | OEM Part No.                 | Description                    | Qty Req | Order Quantity |
|---|-----------------|------------------------------|--------------------------------|---------|----------------|
| 45  | <b>R150691</b>  |                              | Screw - Set Nyloc 3/8-16 x 3/8 | 4       |                |
| 46  | <b>R170714</b>  | 170714,<br>471240,<br>471242 | Fitting - Pressure Relief      | 2       |                |
| 47  | <b>R100103</b>  |                              | Roller End - Grooved           | 2       |                |
| 48  | <b>R104102</b>  |                              | Shaft - 26 Roller              | 1       |                |
| 49  | <b>R1013810</b> |                              | Shaft - 1 SS Roller            | 1       |                |
| 52  | <b>R400182</b>  | 400182                       | Bolt - Hex HD 5/16-18 x 5/8    | 2       |                |
| 53  | <b>R446136</b>  | 446134,<br>446136            | Washer - Lock 5/16 Zinc        | 2       |                |
| 54  | <b>R445781</b>  | 445781                       | Nut - 5/16-18 Whiz             | 2       |                |
| 55  | <b>R415559</b>  | 415559                       | Screw - Set 5/16-18 x 1        | 2       |                |
| 56  | <b>R700508</b>  |                              | Scraper - 26 Grooved Roller    | 1       |                |
| <i>Tech Note: Fits R&amp;R Roller Only:</i> |                 |                              |                                |         |                |
| 57  | <b>R3001706</b> | 3001706                      | Scraper - 26 Grooved Roller    | 1       |                |
| <i>Tech Note: Fits O.E.M. Roller Only:</i>  |                 |                              |                                |         |                |

All original equipment manufacturers names and part numbers are used for identification purposes only, and we are in no way implying that our products are original equipment parts. Prices subject to change without notice.