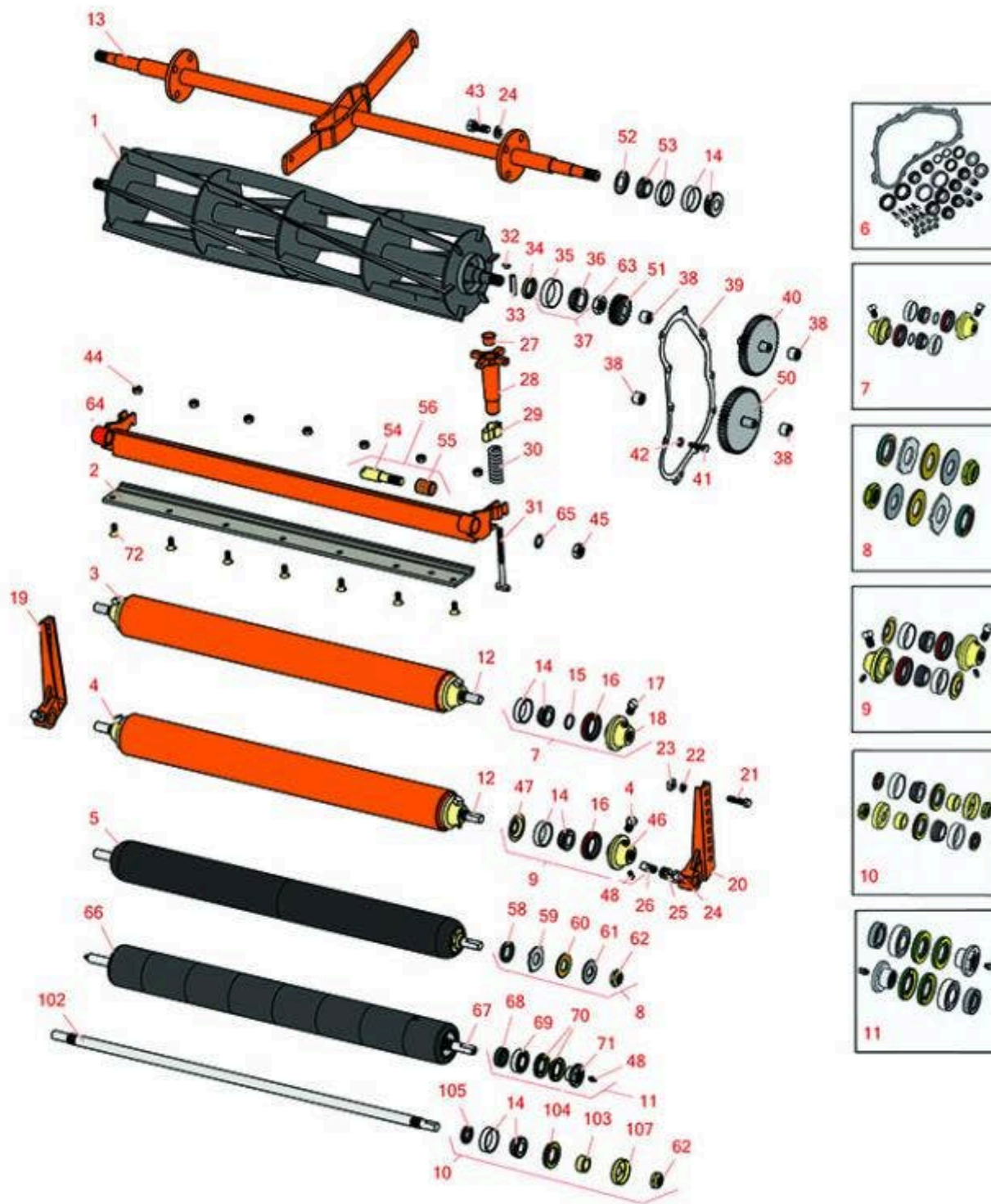




# Replaces Jacobsen HF-15 Parts

## Traction Unit



All original equipment manufacturers names and part numbers are used for identification purposes only, and we are in no way implying that our products are original equipment parts. Prices subject to change without notice.



# Replaces Jacobsen HF-15 Parts

## Traction Unit



Item No	R&R Part No.	OEM Part No.	Description	Qty Req	Order Quantity
---------	--------------	--------------	-------------	---------	----------------

### R&R Reels, Lifetime Guaranteed

1	<b>R502671</b>	108127, 502671	Reel - 6 Blade	1	
---	----------------	-------------------	----------------	---	--

*Detail Description: R&R Reel blades are expertly crafted from premium high carbon-boron alloy steel, heat-treated to perfectly complement both R&R and OEM bedknives. Each reel undergoes precision cylindrical grinding on bearing surfaces, followed by relief grinding for optimal performance. Advanced computer balancing ensures extended reel and bearing life. Backed by our lifetime guarantee against defects in materials and craftsmanship under normal use, R&R Reels deliver unmatched durability and cutting precision you can trust.:*

1	<b>R502672</b>		Reel - 8 Blade	1	
---	----------------	--	----------------	---	--

*Detail Description: R&R Reel blades are expertly crafted from premium high carbon-boron alloy steel, heat-treated to perfectly complement both R&R and OEM bedknives. Each reel undergoes precision cylindrical grinding on bearing surfaces, followed by relief grinding for optimal performance. Advanced computer balancing ensures extended reel and bearing life. Backed by our lifetime guarantee against defects in materials and craftsmanship under normal use, R&R Reels deliver unmatched durability and cutting precision you can trust.:*

1	<b>R502675</b>	108100, 502675	Reel - 10 Blade	1	
---	----------------	-------------------	-----------------	---	--

*Detail Description: R&R Reel blades are expertly crafted from premium high carbon-boron alloy steel, heat-treated to perfectly complement both R&R and OEM bedknives. Each reel undergoes precision cylindrical grinding on bearing surfaces, followed by relief grinding for optimal performance. Advanced computer balancing ensures extended reel and bearing life. Backed by our lifetime guarantee against defects in materials and craftsmanship under normal use, R&R Reels deliver unmatched durability and cutting precision you can trust.:*

### R&R Bedknives, Lifetime Guaranteed

2	<b>R325163</b>	325163	Bedknife - 30" 7 Hole	1	
---	----------------	--------	-----------------------	---	--

*Detail Description: R&R Bedknives are manufactured from high carbon-boron alloy steel and then hardened to RC46-49 to match the temper of our reel blades and original equipment reels. Bedknives are surface ground on the top and front edge and straightened three times before being packaged with oil for rust prevention. All R&R Bedknives now have an increased front edge grind for added life. All R&R Bedknives are guaranteed against defects in material and workmanship under normal use for the life of the part.:*

2	<b>R101251</b>	315834	Bedknife - Double Lip Fwy	1	
---	----------------	--------	---------------------------	---	--

All original equipment manufacturers names and part numbers are used for identification purposes only, and we are in no way implying that our products are original equipment parts. Prices subject to change without notice.



# Replaces Jacobsen HF-15 Parts

## Traction Unit



Item No	R&R Part No.	OEM Part No.	Description	Qty Req	Order Quantity
---------	--------------	--------------	-------------	---------	----------------

*Detail Description: R&R Bedknives are manufactured from high carbon-boron alloy steel and then hardened to RC46-49 to match the temper of our reel blades and original equipment reels. Bedknives are surface ground on the top and front edge and straightened three times before being packaged with oil for rust prevention. All R&R Bedknives now have an increased front edge grind for added life. All R&R Bedknives are guaranteed against defects in material and workmanship under normal use for the life of the part.:*

2	<b>R101251L</b>		Bedknife - Double Lip Low Cut	1	
---	-----------------	--	-------------------------------	---	--

*Detail Description: R&R Bedknives are manufactured from high carbon-boron alloy steel and then hardened to RC46-49 to match the temper of our reel blades and original equipment reels. Bedknives are surface ground on the top and front edge and straightened three times before being packaged with oil for rust prevention. All R&R Bedknives now have an increased front edge grind for added life. All R&R Bedknives are guaranteed against defects in material and workmanship under normal use for the life of the part.:*

### R&R Rollers

3	<b>R113897</b>	113897, 132506	Roller - Smooth Tubular Steel Oil Filled	1	
---	----------------	-------------------	--	---	--

*Tech Note: Constructed with a through shaft, this oil filled heavy-duty roller uses tapered bearings for extended life.:*

*Detail Description: Constructed with a through shaft, this oil filled heavy-duty roller uses tapered bearings for extended life.:*

4	<b>R700500</b>	700500	Roller - Smooth Tubular Steel Regreasable	1	
---	----------------	--------	---	---	--

*Tech Note: Constructed with a through shaft, this heavy duty roller uses greasable tapered bearings for extended life.:*

*Detail Description: Constructed with a through shaft, this heavy duty roller uses greasable tapered bearings for extended life.:*

5	<b>R1013902</b>		Roller - Smooth UHMW Polyethylene	1	
---	-----------------	--	-----------------------------------	---	--

*Tech Note: Machined from solid UHMW, this low maintenance roller uses a 1" solid stainless steel shaft and requires no grease. UHMW material prevents build-up of debris.:*

*Detail Description: Machined from solid UHMW, this low maintenance roller uses a 1" solid stainless steel shaft and requires no grease. UHMW material prevents build-up of debris.:*

66	<b>R1013910</b>		Roller - Fusion Smooth UHMW Polyethylene	1	
----	-----------------	--	--	---	--

All original equipment manufacturers names and part numbers are used for identification purposes only, and we are in no way implying that our products are original equipment parts. Prices subject to change without notice.



# Replaces Jacobsen HF-15 Parts

## Traction Unit



Item No	R&R Part No.	OEM Part No.	Description	Qty Req	Order Quantity
---------	--------------	--------------	-------------	---------	----------------

*Tech Note: Machined from solid UHMW plastic that prevents build-up of debris. This roller turns on precision stainless ball bearings.:*

*Detail Description: Machined from solid UHMW plastic that prevents build-up of debris. This roller turns on precision stainless ball bearings.:*

### Overhaul Kits

6	<b>R500700</b>		Overhaul Kit - Fits Hyd	1
---	----------------	--	-------------------------	---

*Tech Note: Includes 8 ea.: R400190 Bolts, R446136 Washers; 4 ea.: R359875 Bearings, R254-78 Bearings, R254-79 Bearing Cups; 2 ea.: R302755 Cups, R315872 Seals, R315914 Bearings, R328062 Seals, R359828 Rings, R459007 O-Rings, R502522 Bearings; 1 ea.: R390204 Gasket:*

*Detail Description: Includes 8 ea.: R400190 Bolts, R446136 Washers; 4 ea.: R359875 Bearings, R254-78 Bearings, R254-79 Bearing Cups; 2 ea.: R302755 Cups, R315872 Seals, R315914 Bearings, R328062 Seals, R359828 Rings, R459007 O-Rings, R502522 Bearings; 1 ea.: R390204 Gasket:*

7	<b>R100140</b>		Overhaul Kit - Oil Filled Roller	1
---	----------------	--	----------------------------------	---

*Tech Note: Includes 2 ea.: R500574 Roller Collar, R500534 Bearing Cup & Cone, R459007 O-ring, R328062 Seal, R412063 Screw:*

*Detail Description: Includes 2 ea.: R500574 Roller Collar, R500534 Bearing Cup & Cone, R459007 O-ring, R328062 Seal, R412063 Screw:*

8	<b>R101399</b>		Overhaul Kit - UHMW 2 Pc Roller	1
---	----------------	--	---------------------------------	---

*Tech Note: Fits all R&R 2-1/2" - 3-1/2" Dia. Black UHMW Plastic Rollers that do not use ball bearings.. Includes 2 ea.: R1503230 Star Washers, R1503470 Seals, R150333 Thrust Washers, R3296-15 Locknuts, R1503471 Bronze Thrust Washers:*

*Detail Description: Fits all R&R 2-1/2" - 3-1/2" Dia. Black UHMW Plastic Rollers that do not use ball bearings.. Includes 2 ea.: R1503230 Star Washers, R1503470 Seals, R150333 Thrust Washers, R3296-15 Locknuts, R1503471 Bronze Thrust Washers:*

9	<b>R700505</b>		Conversion Kit - Roller	1
---	----------------	--	-------------------------	---

*Tech Note: Includes: 2 each: R254-78 Bearing Cones, R254-79 Bearing Cups, R328062 Seals, R412063 Square Head Set Screws, R700501 Roller Ends & R700502 Grease Retainers.:*

*Detail Description: Includes: 2 each: R254-78 Bearing Cones, R254-79 Bearing Cups, R328062 Seals, R412063 Square Head Set Screws, R700501 Roller Ends & R700502 Grease Retainers.:*

10	<b>R100133</b>		Overhaul Kit - Roller	1
----	----------------	--	-----------------------	---

All original equipment manufacturers names and part numbers are used for identification purposes only, and we are in no way implying that our products are original equipment parts. Prices subject to change without notice.



# Replaces Jacobsen HF-15 Parts

## Traction Unit



Item No	R&R Part No.	OEM Part No.	Description	Qty Req	Order Quantity
---------	--------------	--------------	-------------	---------	----------------

*Tech Note: Includes: 2ea: R254-78 Bearings, R254-79 Bearing Cups, R3296-15 Locknuts, R338645 Cup Deflectors, R338646 Seals, R338647 Seals, & R366168 Wear Sleeves:*

*Detail Description: Includes: 2ea: R254-78 Bearings, R254-79 Bearing Cups, R3296-15 Locknuts, R338645 Cup Deflectors, R338646 Seals, R338647 Seals, & R366168 Wear Sleeves:*

11	<b>R114-5430</b>	114-5430	Overhaul Kit - Roller	1	
----	------------------	----------	-----------------------	---	--

*Tech Note: Includes 4 ea.: R112-7494 Seals; 2 ea.: R302-5 Grease Zerk, R114-3717 Seals, R112-5290 Bearings & R114-3745 Locknuts:*

*Detail Description: Includes 4 ea.: R112-7494 Seals; 2 ea.: R302-5 Grease Zerk, R114-3717 Seals, R112-5290 Bearings & R114-3745 Locknuts:*

### Other Parts Available

12	<b>R328058</b>	328058	Shaft - Roller	1	
----	----------------	--------	----------------	---	--

13	<b>R122038</b>	122038	Axle - Main Assy. Fits HF-15	1	
----	----------------	--------	------------------------------	---	--

14	<b>R500534</b>	500534, R500534	Bearing - with Cup	4	
----	----------------	--------------------	--------------------	---	--

*Detail Description: Kit includes: 1 ea R254-78- Bearing Cone & R254-79 Bearing Cone:*

15	<b>R459007</b>	459007	O-Ring - Roller	2	
----	----------------	--------	-----------------	---	--

16	<b>R328062</b>	328062	Seal - Roller	2	
----	----------------	--------	---------------	---	--

17	<b>R412063</b>	412063	Screw - Sq. HD. Set	2	
----	----------------	--------	---------------------	---	--

18	<b>R500574</b>	500574	Collar - Roller	2	
----	----------------	--------	-----------------	---	--

19	<b>R500763</b>	500763	Bracket - Roller LH	1	
----	----------------	--------	---------------------	---	--

20	<b>R500764</b>	500764	Bracket - Roller RH	1	
----	----------------	--------	---------------------	---	--

21	<b>R400266</b>	400266	Bolt - Hex HD 3/8-16 x 1-1/2	2	
----	----------------	--------	------------------------------	---	--

22	<b>R3254-6</b>	3254-6, 446140, 446142	Washer - Lock 3/8	2	
----	----------------	------------------------------	-------------------	---	--

23	<b>R444510</b>	444510	Nut - 3/8-16 Sq.	2	
----	----------------	--------	------------------	---	--

All original equipment manufacturers names and part numbers are used for identification purposes only, and we are in no way implying that our products are original equipment parts. Prices subject to change without notice.





## Replaces Jacobsen HF-15 Parts

Traction Unit



Item No	R&R Part No.	OEM Part No.	Description	Qty Req	Order Quantity
24	<b>R446154</b>	446152, 446154	Washer - Lock 1/2	2	
25	<b>R443818</b>	443818	Nut - 1/2-13 Hex Jam Zinc	2	
26	<b>R412003</b>	412003	Screw - 1/2-13 x 1-1/2 Sq HD	2	
27	<b>R312794</b>	312794	Plug - Adj. Handle	2	
28	<b>R500548</b>	500548	Handle - Adjusting	2	
29	<b>R315964</b>	315964	Spring - Friction	2	
30	<b>R315966</b>	315966	Spring - Adjusting	2	
<i>Tech Note: Spring overall length is 2-3/4":</i>					
<i>Detail Description: Spring overall length is 2-3/4":</i>					
31	<b>R315965</b>	315965	Screw - Adjusting Fairway	2	
<i>Tech Note: 4-1/2" overall length:</i>					
<i>Detail Description: 4-1/2" overall length:</i>					
32	<b>R315877</b>	315877	Key - Pinion Gear	4	
33	<b>R461406</b>	461406	Pin - Roll	2	
34	<b>R315872</b>	315872, 336781	Seal - Reel	2	
35	<b>R302755</b>	302755	Cup - Bearing	2	
36	<b>R315914</b>	315914	Tapered Bearing Cone	2	
37	<b>R500711</b>	500711	Bearing - with Cup	2	
38	<b>R359875</b>	359875	Bearing - Needle	4	
39	<b>R390204</b>	390204	Gasket - Cover (Fits HF-15)	1	
40	<b>R131170</b>	131170, 162219	Gear - Int (Fits HF-15)	1	

All original equipment manufacturers names and part numbers are used for identification purposes only, and we are in no way implying that our products are original equipment parts. Prices subject to change without notice.



## Replaces Jacobsen HF-15 Parts

*Traction Unit*



Item No	R&R Part No.	OEM Part No.	Description	Qty Req	Order Quantity
41	R400190	352737, 400190	Bolt - Hex HD 5/16-18 x 1-1/4 GR5	8	
42	R446136	446134, 446136	Washer - Lock 5/16 Zinc	8	
43	R400406	400406	Bolt - Hex HD 1/2-13 x 1-1/4	8	
44	R101271	445684	Nut - Bedknife	7	
45	R443828	443828	Nut - 5/8-18 Hex	2	
46	R700501	700501	Roller End - Regreasable	2	
47	R700502	700502	Retainer - Grease	2	
48	R302-5	302-5, 471214, 471223, 471226	Fitting - Grease	2	
50	R162220	162220	Gear - Idler w/Shaft	1	
51	R336825	336825	Gear - Pinion Fits HF-15	1	
52	R359828	359828	Ring - Nilos	2	
53	R502522	502522	Tapered Bearing Set - Cup and Cone	2	
54	R315909	315909	Stud - Bedknife Backing	2	
55	R545723	545723	Bushing - For Backing Stud	2	
56	R500264	500264	Stud - with Bushing	2	
58	R1503470		Seal - Inner Wiper	2	
59	R1503230		Washer - Thrust Outer Keyed	2	
60	R1503471		Washer - Thrust SAE660 Bronze	2	
61	R150333		Washer - Flat Keyed Outer SS	2	

All original equipment manufacturers names and part numbers are used for identification purposes only, and we are in no way implying that our products are original equipment parts. Prices subject to change without notice.



## Replaces Jacobsen HF-15 Parts

*Traction Unit*



Item No	R&R Part No.	OEM Part No.	Description	Qty Req	Order Quantity
62	<b>R3296-15</b>	3296-15, 367029, 444742	Locknut - 3/4-16 Nylon Jam	2	
63	<b>R444742</b>	444742	Nut - 3/4-16 Gripco Centerlock	2	
64	<b>R130304</b>	130304	Backing Bar - Bed Knife	2	

*Tech Note: Includes R545723:*

*Detail Description: Includes R545723:*

65	<b>R447224</b>	447224	Washer - Lock 5/8 Int Star Z	2	
----	----------------	--------	------------------------------	---	--

### **Replaces Jacobsen 132506 Roller Parts**

67	<b>R1013911</b>		Shaft	1	
68	<b>R114-3717</b>		Seal	2	
69	<b>R112-5290</b>		Bearing - Stainless	2	
70	<b>R112-7494</b>		Seal	4	
71	<b>R114-3745</b>		Locknut - Bearing - Stainless	2	
72	<b>R101270</b>	402698, 403757	Screw - Bedknife 3/8-24 x 13/16	7	
102	<b>R339051</b>	339051	Shaft - Roller - Fits OEM Rollers	1	
103	<b>R366168</b>	336168, 366168	Sleeve - Wear Hardened	2	
104	<b>R338646</b>	338646	Seal - Outer Roller	2	
105	<b>R338647</b>	338647	Seal - Inner Roller	2	
107	<b>R338645</b>	338645	Deflector - Cup	2	

All original equipment manufacturers names and part numbers are used for identification purposes only, and we are in no way implying that our products are original equipment parts. Prices subject to change without notice.