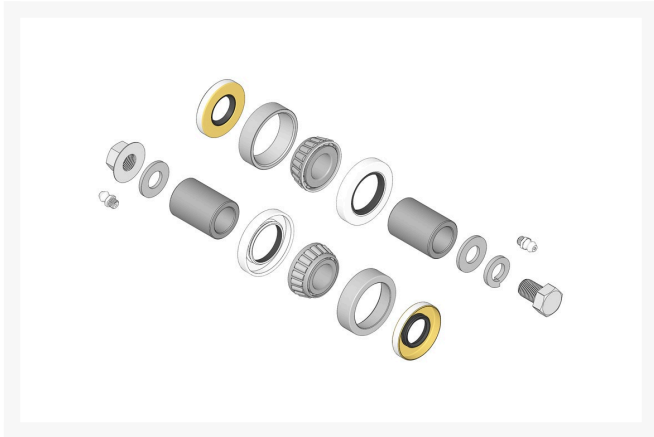




Overhaul Kit - Roller

R100155



Details

Includes: 2 ea: R253-117 Seals, R253-122 Seals, R254-78 Bearings, R254-79 Bearing Cups, R51-1440 Wear Sleeves, R302-5 Grease Fittings, R453017; 1 ea: R3253-7 Washer, R3213-20 Bolt, & R32128-31 Locknut

Specifications

Manufacturer R&R Products

Fits Models

Toro Reelmaster 350-D

Replacement Parts

R253-117	Seal - Outer Triple Lip
R253-122	Seal
R254-78	Tapered Bearing Cone
R254-79	Cup - Bearing
R302-5	Fitting - Grease
R32128-31	Locknut - 1/2-20 Flanged
R3213-20	Bolt - 1/2-20 x 3/4 Gr 5 Hex
R3253-7	Washer - Lock 1/2
R453017	Washer - Flat 1/2
R51-1440	Sleeve - Wear Rear Roller

Golfmech Ltd

Hullaghfin Balrath Navan, C15 VOFS
353 87 632 9827

<https://golfmech.rrproducts.com/>