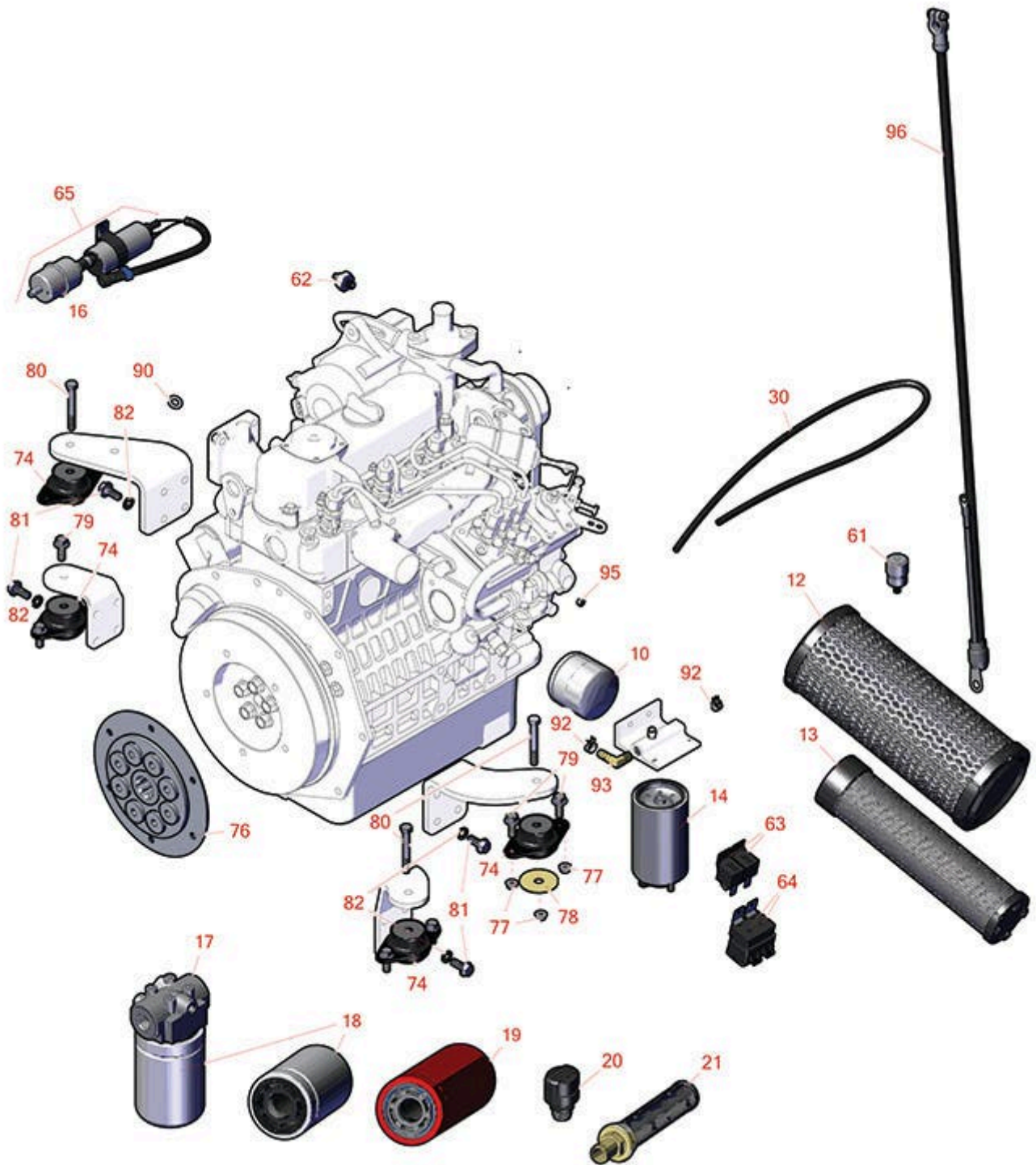




Replaces Toro Reelmaster 7000-D Parts

Traction Unit - Model 03781
Engine



All original equipment manufacturers names and part numbers are used for identification purposes only, and we are in no way implying that our products are original equipment parts. Prices subject to change without notice.



Replaces Toro Reelmaster 7000-D Parts

*Traction Unit - Model 03781
Engine*



Item No	R&R Part No.	OEM Part No.	Description	Qty Req	Order Quantity
10	RRF10641	125-7025	SilverGuard Oil Filter	1	
10	RX7000074035	104-5169	Kubota Filter - Oil	1	
10	RRF10613		SilverGuard Oil Filter	1	
10	RX7000032091	104-5169, 115-8527, 98-7431	Kubota Filter - Eng. Oil Asy	1	
10	RRF10633	104-5169, 115-8527, 98-7431	SilverGuard Oil Filter	1	
12	R108-3814	104-4260, 108-3814	Baldwin Air Filter	1	
12	RRF10179	108-3814	SilverGuard Air Filter	1	
13	R108-3816	104-4261, 108-3816	Baldwin Air Filter	1	
13	RRF10181	108-3816	SilverGuard Air Filter	1	
14	RRF10536	125-2915	SilverGuard Filter - Fuel/Water	1	
14	R110-9044	110-9044, 125-2914	Donaldson Water/Fuel Seperator Assy	0	
16	R112-7836	112-7836, RR ONLY	Baldwin Fuel Filter - in Line	1	
16	RRF10534	112-7836, RR ONLY, RRONLY	SilverGuard Fuel Filter - Inline	1	
17	R93-2242	139-1010, 93-2242	Oil Filter & Head Assy - Hyd	1	
18	R75-1310	13170210, 75-1310	Baldwin Hyd Oil Filter	1	

All original equipment manufacturers names and part numbers are used for identification purposes only, and we are in no way implying that our products are original equipment parts. Prices subject to change without notice.



Replaces Toro Reelmaster 7000-D Parts

*Traction Unit - Model 03781
Engine*



Item No	R&R Part No.	OEM Part No.	Description	Qty Req	Order Quantity
18	RRF10623	13170210, 75-1310	SilverGuard Oil Filter - Hyd	1	
19	R94-2621	94-2621	Baldwin Oil Filter - Hyd	1	
20	R115-9793	115-9793	Breather	1	
21	R104-7546	104-7546, 104-7546`	Strainer - Tank	1	

Hoses

30	R110-4113	110-4113, 63-7627	Hose-Fuel	1	
30	R110-8802	110-8802, 93-5483	Hose-Fuel	1	

Gauges & Controls

61	R104-3563	104-3563	Indicator - Service	1	
62	RX1545139012	98-9416	Kubota Sensor - Oil Pressure	1	
63	R99-7435	99-7435	Relay - 70 Amp	2	
64	R99-7430	99-7430	Relay - 30 Amp	2	
65	R110-8806	110-8806	Fuel Pump and Filter Assy	1	

Other Parts Available

74	R53-9682	53-9682	Motor Mount	4	
76	R114-3848	114-3848	Coupler- Spring - Flywheel	1	
77	R104-8301	104-8301, 104-9301, 109-6658, 133-7570	Locknut - 3/8-16 Nylon Flanged	12	
78	R63-7400	63-7400	Washer - Rebound	4	

All original equipment manufacturers names and part numbers are used for identification purposes only, and we are in no way implying that our products are original equipment parts. Prices subject to change without notice.



Replaces Toro Reelmaster 7000-D Parts

Traction Unit - Model 03781
Engine



Item No	R&R Part No.	OEM Part No.	Description	Qty Req	Order Quantity
79	R3234-11	3234-11	Bolt - Hex Washer HD	8	
80	R323-13	01-150-1020, 01-178-0622, 20-54-AD, 20-54-AGD, 323-13, 513366	Bolt - Hex HD 3/8-16 x 2-3/4 GR5	3	
81	R42-9250	42-9250	Bolt - M12-1.25 x 25mm GR8.8	16	
82	R48-9590	01-176-0040, 42-9600, 48-9590, 48-9690, 63-7780	Washer - Lock 10mm	16	
90	R453011	01-166-0100, 01-166-0120, 01-166-0270, 01-166-0500, 01-166-0600, 01-166-0620, 132-4593, 2356-3, 237-12, 24-10-AD, 24-11-AD, 24-11-BD, 24-12-AD, 24-12-BD, 30-9310, 32-8190, 3256-24, 3256-3, 3256-36, 3256-4, 453011, 47-9950, 48-9220, 513458, 7-0052	Washer - Flat 3/8 SAE Y/Zinc	2	
92	R92-2379	92-2379	Clamp - Hose	2	
93	R353-781	353-781	Fitting-Elbow	2	

All original equipment manufacturers names and part numbers are used for identification purposes only, and we are in no way implying that our products are original equipment parts. Prices subject to change without notice.



Replaces Toro Reelmaster 7000-D Parts

*Traction Unit - Model 03781
Engine*



Item No	R&R Part No.	OEM Part No.	Description	Qty Req	Order Quantity
95	R3296-2	32127-10, 3296-2, 9157404	Nut - #10 Lock	1	
96	R117-2377	117-2377	Cable-Battery, Negative	1	

All original equipment manufacturers names and part numbers are used for identification purposes only, and we are in no way implying that our products are original equipment parts. Prices subject to change without notice.