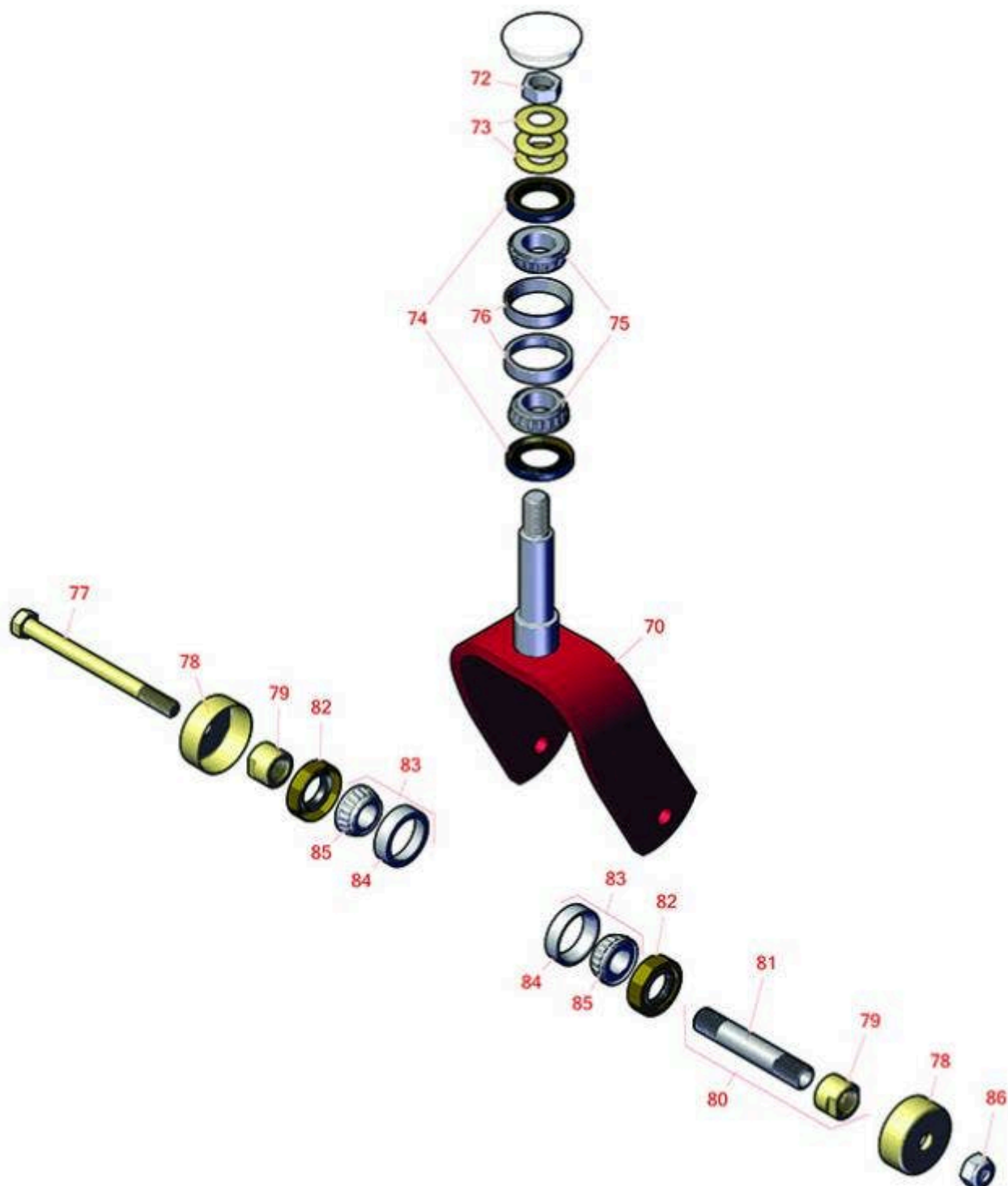




Replaces Toro GrandStand Revolution Mower Parts

Mower with 60in Deck - Model 18564
Caster Wheel



All original equipment manufacturers names and part numbers are used for identification purposes only, and we are in no way implying that our products are original equipment parts. Prices subject to change without notice.



Replaces Toro GrandStand Revolution Mower Parts

Mower with 60in Deck - Model 18564
Caster Wheel



| Item No | R&R Part No. | OEM Part No. | Description | Qty Req | Order Quantity |
|---------|---------------------|--|------------------------------|---------|----------------|
| 70 | R121-7988-01 | 121-7988-01 | Fork - Caster | 2 | |
| 72 | R3296-51 | 3296-51, 3296-81 | Nut - Nylon Lock 3/4-10 Gr 8 | 2 | |
| 73 | R1-633508 | 1-633508 | Washer - Spring Disc | 6 | |
| 74 | R116-5647 | 116-5647 | Seal - Grease | 4 | |
| 75 | R254-94 | 1-543509, 254-94, 32-8090, 32-8240, 32-9640, 40440, 62-3330 | Tapered Bearing Cone | 4 | |
| 76 | R254-72 | 01-103-0050, 01-103-0120, 01-103-0140, 1-543508, 254-71, 254-72, 40439, 62-3340, 99-4511 | Cup - Bearing | 4 | |
| 77 | R325-20 | 01-150-1250, 01-178-0848, 325-20 | Bolt - Hx HD 1/2-13 x 6 | 2 | |
| 78 | R103-2768 | 103-2768 | Guard - Seal | 4 | |
| 79 | R103-3051 | 103-3051 | Spacer - Nut - Hardened | 4 | |
| 80 | R126-5359 | 126-5359 | Caster Axle Assy w/Bushing | 2 | |
| 81 | R103-3157 | 103-3157 | Axle - Caster Wheel | 2 | |
| 82 | R103-0063 | 103-0063 | Seal - Grease | 4 | |
| 83 | R500534 | 1-633585 | Bearing - with Cup | 4 | |

All original equipment manufacturers names and part numbers are used for identification purposes only, and we are in no way implying that our products are original equipment parts. Prices subject to change without notice.



Replaces Toro GrandStand Revolution Mower Parts

Mower with 60in Deck - Model 18564
Caster Wheel



| Item No | R&R Part No. | OEM Part No. | Description | Qty Req | Order Quantity |
|---------|--------------|--------------|-------------|---------|----------------|
|---------|--------------|--------------|-------------|---------|----------------|

Detail Description: Kit includes: 1 ea R254-78- Bearing Cone & R254-79 Bearing Cone:

| | | | | | |
|----|----------------|---|---------------|---|--|
| 84 | R254-79 | 01-103-0060, 01-103-0130, 1-633584, 252-106, 254-79, 32-7800, 32-9590 | Cup - Bearing | 4 | |
|----|----------------|---|---------------|---|--|

Detail Description: Use R254-79M installation mandrel to properly install race.:

| | | | | | |
|----|----------------|---|----------------------|---|--|
| 85 | R254-78 | 01-102-0060, 01-102-0130, 1-633585, 254-78, 32-7790, 32-9580, 93-4813 | Tapered Bearing Cone | 4 | |
|----|----------------|---|----------------------|---|--|

| | | | | | |
|----|-----------------|---|-----------------------------|---|--|
| 86 | R3296-25 | 30-3380, 32127-21, 32127-31, 3290-160, 3290-33, 3296-13, 3296-25, 3296-45, 329645 | Locknut - 1/2-13 Heavy ESNA | 2 | |
|----|-----------------|---|-----------------------------|---|--|

All original equipment manufacturers names and part numbers are used for identification purposes only, and we are in no way implying that our products are original equipment parts. Prices subject to change without notice.