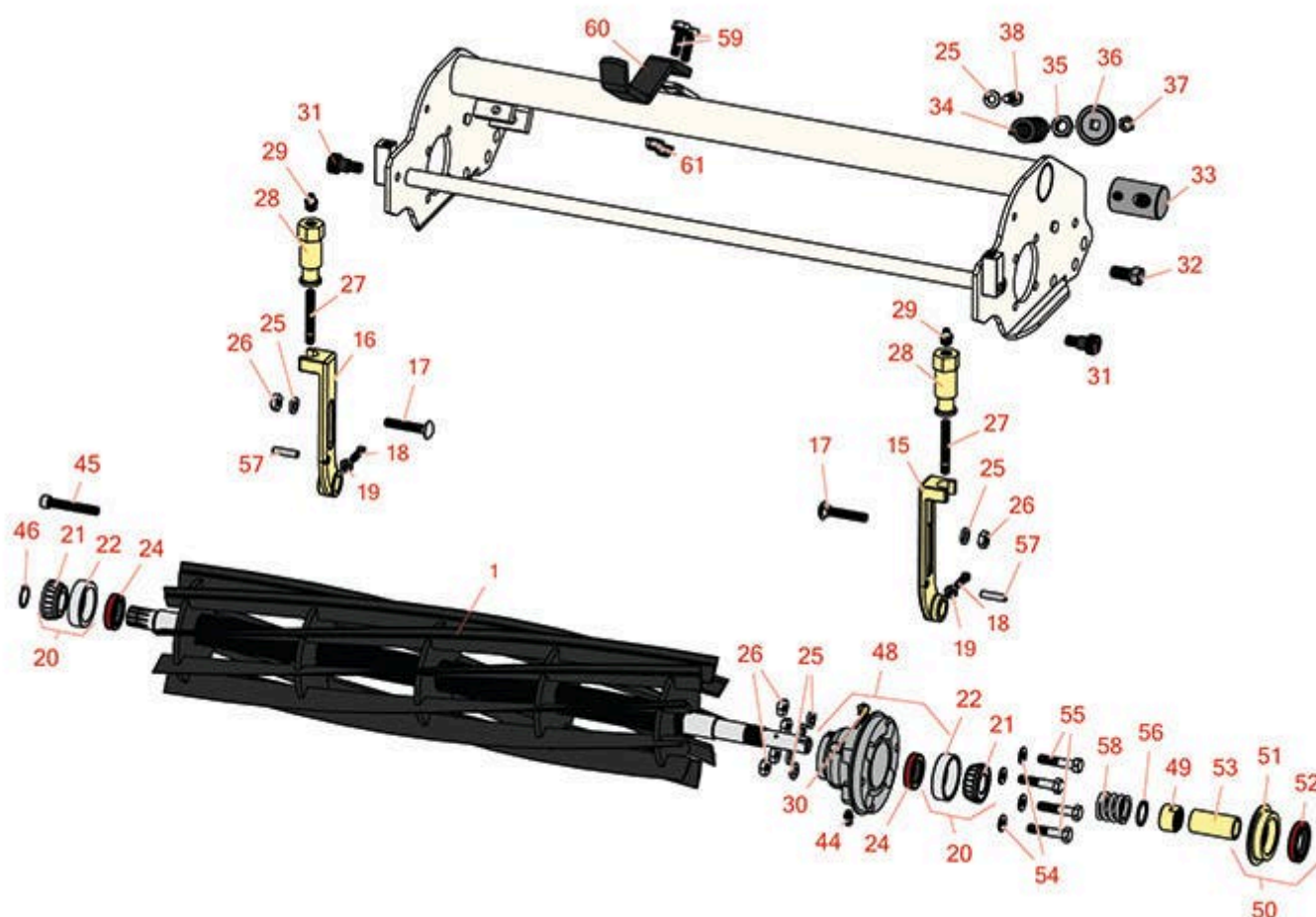




Replaces Jacobsen Eclipse 360 Elite

Parts

Cutting Unit
Reel & Bedknife



All original equipment manufacturers names and part numbers are used for identification purposes only, and we are in no way implying that our products are original equipment parts. Prices subject to change without notice.



Replaces Jacobsen Eclipse 360 Elite

Parts

Cutting Unit
Reel & Bedknife



Item No	R&R Part No.	OEM Part No.	Description	Qty Req	Order Quantity
---------	--------------	--------------	-------------	---------	----------------

R&R Reels, Lifetime Guaranteed

1	R503319	5001095, 5003053, 503319	Reel - 7 Blade LH	1	
---	----------------	--------------------------------	-------------------	---	--

Detail Description: R&R Reel blades are expertly crafted from premium high carbon-boron alloy steel, heat-treated to perfectly complement both R&R and OEM bedknives. Each reel undergoes precision cylindrical grinding on bearing surfaces, followed by relief grinding for optimal performance. Advanced computer balancing ensures extended reel and bearing life. Backed by our lifetime guarantee against defects in materials and craftsmanship under normal use, R&R Reels deliver unmatched durability and cutting precision you can trust.:

1	R503375	5001099, 503375	Reel - 9 Blade LH	1	
---	----------------	--------------------	-------------------	---	--

Detail Description: R&R Reel blades are expertly crafted from premium high carbon-boron alloy steel, heat-treated to perfectly complement both R&R and OEM bedknives. Each reel undergoes precision cylindrical grinding on bearing surfaces, followed by relief grinding for optimal performance. Advanced computer balancing ensures extended reel and bearing life. Backed by our lifetime guarantee against defects in materials and craftsmanship under normal use, R&R Reels deliver unmatched durability and cutting precision you can trust.:

1	R506636	5000028, 5001101, 506636	Reel - 11 Blade LH	1	
---	----------------	--------------------------------	--------------------	---	--

Detail Description: R&R Reel blades are expertly crafted from premium high carbon-boron alloy steel, heat-treated to perfectly complement both R&R and OEM bedknives. Each reel undergoes precision cylindrical grinding on bearing surfaces, followed by relief grinding for optimal performance. Advanced computer balancing ensures extended reel and bearing life. Backed by our lifetime guarantee against defects in materials and craftsmanship under normal use, R&R Reels deliver unmatched durability and cutting precision you can trust.:

Other Parts Available

15	R153979	153979, 3008439	Bracket - Front Roller	1	
----	----------------	--------------------	------------------------	---	--

15	R163231	163231	Bracket - Extra Long - Front Roller	1	
----	----------------	--------	-------------------------------------	---	--

16	R153980	153980, 3008438	Bracket - Front Roller	1	
----	----------------	--------------------	------------------------	---	--

16	R163232	163232	Bracket - Extra Long - Front Roller	1	
----	----------------	--------	-------------------------------------	---	--

All original equipment manufacturers names and part numbers are used for identification purposes only, and we are in no way implying that our products are original equipment parts. Prices subject to change without notice.



Replaces Jacobsen Eclipse 360 Elite

Parts

Cutting Unit
Reel & Bedknife



Item No	R&R Part No.	OEM Part No.	Description	Qty Req	Order Quantity
17	R441674	441674	Screw - 5/16-18 x 1-3/4 Carriage	2	
18	R352737	352737	Screw - Set 1/4 x 7/8 Sq Head	2	
19	R443102	443102	Nut - 1/4-20 Yellow Zinc	2	
20	R500534	500534, R500534	Bearing - with Cup	2	
<i>Detail Description: Kit includes: 1 ea R254-78- Bearing Cone & R254-79 Bearing Cone:</i>					
21	R254-78	254-78, 385174, 4121174, 4135152	Tapered Bearing Cone	2	
22	R254-79	254-79, 4121175	Cup - Bearing	2	
<i>Detail Description: Use R254-79M installation mandrel to properly install race.:</i>					
24	R336962	336962	Seal	2	
25	R446136	446134, 446136	Washer - Lock 5/16 Zinc	8	
26	R443106	443106	Nut - 5/16-18 Y/Zinc Plated	8	
27	R343616	343616, 443102	Stud	2	
28	R365009	3005692, 365009, 365170, 441674	Knob - Adjusting Roller	2	
29	R471219	366852, 471219	Zerk - Grease	2	
30	R170714	170714, 471240, 471242	Fitting - Pressure Relief	1	
31	R365246	365246	Bolt - Shoulder w/Nyloc Patch	2	

All original equipment manufacturers names and part numbers are used for identification purposes only, and we are in no way implying that our products are original equipment parts. Prices subject to change without notice.



Replaces Jacobsen Eclipse 360 Elite

Parts

Cutting Unit
Reel & Bedknife



Item No	R&R Part No.	OEM Part No.	Description	Qty Req	Order Quantity
32	R315298	315298	Bolt - Bed Bar	2	
33	R4320846	4320846	Trunnion - Internal	2	
34	R4256231	4256231	Spring - Compression	2	
35	R400050	400050	Nut - 1/2-20 Hx Jam Nyloc	2	
36	R4256233	4256233	Washer - Bedknife Adjustment	2	
37	R400053	400053	Nut - 5/16-24 Hex Slotted	2	
38	R400186	400186	Bolt - Hex HD 5/16-18 x 7/8	2	
44	R302-5	302-5, 471214, 471223, 471226	Fitting - Grease	2	
45	R434049	434049	Bolt - Soc HD Cap 5/16-18 x 2	2	
48	R164144	1000480, 163397, 164144, 2000060	Housing - Reel Bearing	1	
<i>Detail Description: Includes R336962 Seal, R302-5 Zerk, R170714 Relief Fitting & R254-79 Cup:</i>					
49	R364900	364900	Nut - Reel Tension	1	
50	R163398	163398, 163892	Seal - Spacer Assy	1	
51	R363814	163892, 363814	Spacer - Seal	1	
52	R337677	315257, 337677	Seal - Oil	2	
53	R367164	367164	Spacer - Reel	2	

All original equipment manufacturers names and part numbers are used for identification purposes only, and we are in no way implying that our products are original equipment parts. Prices subject to change without notice.



Replaces Jacobsen Eclipse 360 Elite

Parts

*Cutting Unit
Reel & Bedknife*



Item No	R&R Part No.	OEM Part No.	Description	Qty Req	Order Quantity
54	R453009	3256-23, 452004, 452006, 452008, 453009	Washer - Flat 5/16 SAE	2	
55	R400192	400192	Bolt - Hex HD 5/16-18 x 1-1/2	4	
56	R304745	304745	Washer - Reel	1	
57	R461256	461256	Pin - 1/4 x 1	2	
58	R363047	348846, 363047	Spring - Reel	1	
59	R403751	403751	Bolt - Serrated Washer HD	2	
60	R3010293	3010293	Stop - Mower	1	
61	R445722	445722	Nut - Serrated Washer	8	

All original equipment manufacturers names and part numbers are used for identification purposes only, and we are in no way implying that our products are original equipment parts. Prices subject to change without notice.