

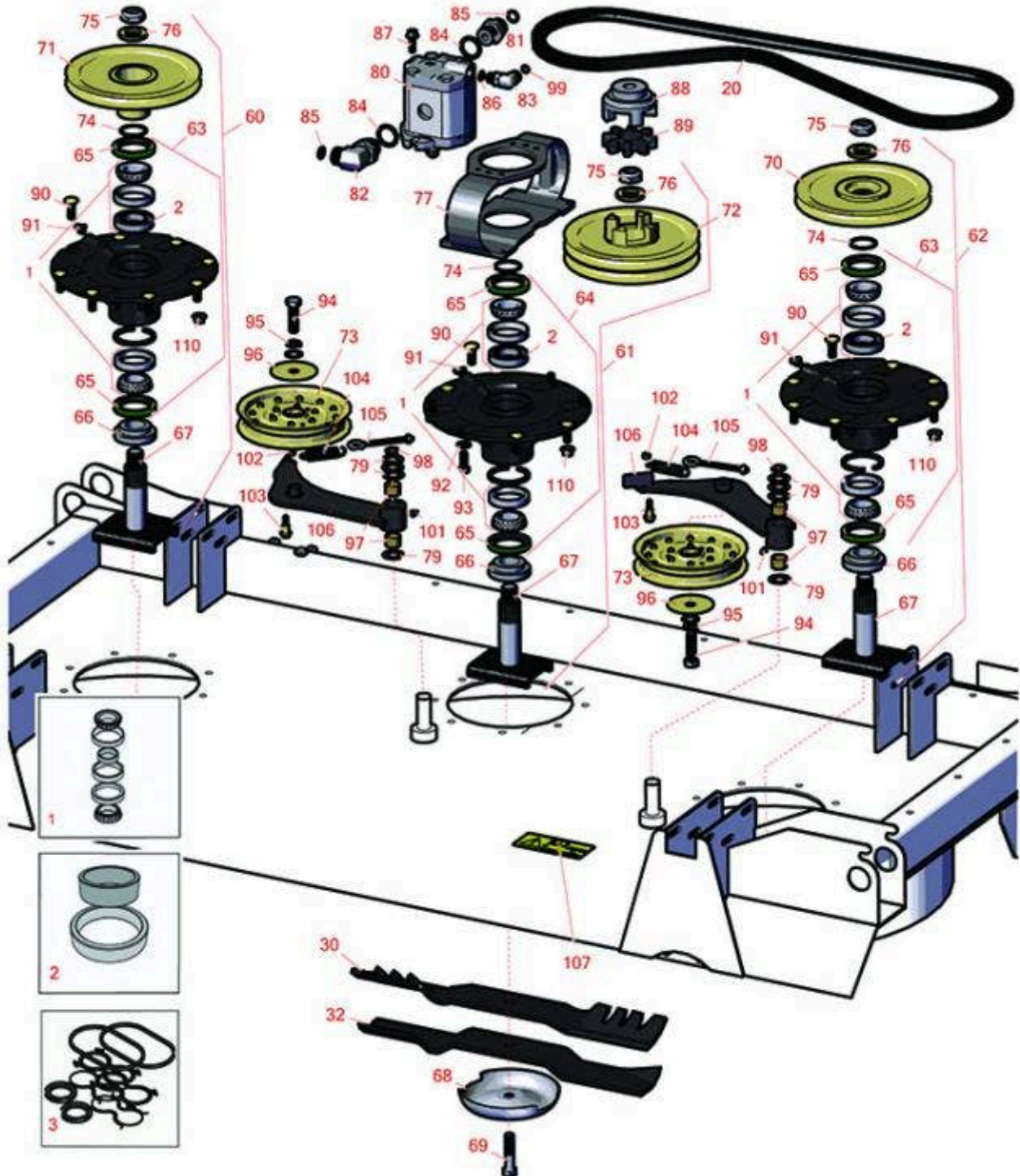


Replaces Toro Groundsmaster 4110-D

Parts

Rotary Mower - Model 30447

Front Deck Hydraulics and Spindles



All original equipment manufacturers names and part numbers are used for identification purposes only, and we are in no way implying that our products are original equipment parts. Prices subject to change without notice.



Replaces Toro Groundsmaster 4110-D Parts

Rotary Mower - Model 30447
Front Deck Hydraulics and Spindles



Item No	R&R Part No.	OEM Part No.	Description	Qty Req	Order Quantity
Overhaul Kits					
1	R110-8297	110-8297, 26-1830	Bearing Set w/Retaining Rings - Spindle	3	
2	R104-3549	104-3549	Spacer Set - Spindle Bearing	3	
3	R114-5620	114-5620	Seal Kit - Fits R127-3694 Hyd Motor	1	
Belts					
20	R108-8077	105-7438, 108-8077	V-Belt - Deck	2	
Rotary Blades					
30	R107-0215-03	107-0215-03	Mower Blade - Mulcher - 19 in	3	
<i>Detail Description: Mulching mower blades increase efficiency and productivity. The patented Faltor mulching "teeth" circulate cut grass back into the deck multiple times creating a finer cut and better looking turf.:</i>					
32	R106-7166-03	106-7166-03	Mower Blade - 19 Inch Combo	3	
Other Parts Available					
60	R119-4549	104-3531, 119-4549, 139-1038	High Driven Spindle Assy	1	
61	R119-5298	106-4270, 119-5298	Double-Driving Spindle Assy	1	
62	R119-4776	104-3532, 119-4776	Spindle Assy	1	
63	R119-4775	119-4775	Spindle Housing Assy	2	
64	R119-4546	104-3552, 119-3552, 119-4546	Spindle Housing Assy	1	
65	R253-154	253-154	Seal - Spindle	6	

All original equipment manufacturers names and part numbers are used for identification purposes only, and we are in no way implying that our products are original equipment parts. Prices subject to change without notice.



Replaces Toro Groundsmaster 4110-D Parts

*Rotary Mower - Model 30447
Front Deck Hydraulics and Spindles*



Item No	R&R Part No.	OEM Part No.	Description	Qty Req	Order Quantity
66	R92-9800	69-6950, 69-6980, 92-9800	Spacer - Spindle	3	
67	R104-3554	104-3554	Shaft - Spindle Assy.	3	
68	R72-9361	27-1000, 27-1001, 72-9360, 72-9361	Cup - Anti-Scalp	3	
69	R92-5816	92-5816	Bolt - Hex HD 1/2-20 x 2-1/4	3	
70	R104-3546	104-3546	Pulley - Lower Driven	1	
71	R104-3548	104-3548	Pulley - Higher Driven	1	
72	R106-4269	106-4269	Double Pulley Assy - Drive	1	
73	R110-9596	110-9596, 132-9421	Pulley- Flat Idler	2	
74	R106-7159	106-7159	O-Ring	3	
75	R32127-46	32127-46, 3296-60	Locknut	3	
76	R104-8322	104-8322, 120-5576	Washer - Spindle Shaft Hardened	3	
77	R106-4268	106-4268	Mount - Motor Drive	1	
79	R3-6498	3--6498, 3-6498, 47-8270	Washer - Thrust	8	
80	R99-5489	99-5489	Hydraulic Motor	1	
80	R127-3694	127-3694	Hydraulic Motor	1	
81	R340-8	340-8	Adapter	1	
82	R340-139	340-139	Hydraulic Fitting - 90 Deg	1	

All original equipment manufacturers names and part numbers are used for identification purposes only, and we are in no way implying that our products are original equipment parts. Prices subject to change without notice.



Replaces Toro Groundsmaster 4110-D Parts

*Rotary Mower - Model 30447
Front Deck Hydraulics and Spindles*



Item No	R&R Part No.	OEM Part No.	Description	Qty Req	Order Quantity
83	R340-77	340-100, 340-77, 95-7889	Hydraulic Fitting	1	
84	R237-81	237-81, 237.81, 327-81	O-Ring	2	
85	R237-65	237-65, 237.65	O-Ring	2	
86	R237-42	237-42, 31-4160	O-Ring	1	
87	R3234-42	3234-42	Bolt - 3/8-16 x 1 Hx HD Fl	2	
88	R104-3541	104-3541	Hub - Drive	1	
89	R104-3542	104-3542	Spider	1	
90	R114-8195	114-8195, R & R ONLY	Bolt- Ribbed Neck	20	
91	R302-60	302-60	Zerk - Grease 90 Deg.	3	

All original equipment manufacturers names and part numbers are used for identification purposes only, and we are in no way implying that our products are original equipment parts. Prices subject to change without notice.



Replaces Toro Groundsmaster 4110-D Parts



Rotary Mower - Model 30447
Front Deck Hydraulics and Spindles

Item No	R&R Part No.	OEM Part No.	Description	Qty Req	Order Quantity
92	R453011	01-166-0100, 01-166-0120, 01-166-0270, 01-166-0500, 01-166-0600, 01-166-0620, 132-4593, 2356-3, 237-12, 24-10-AD, 24-11-AD, 24-11-BD, 24-12-AD, 24-12-BD, 30-9310, 32-8190, 3256-24, 3256-3, 3256-36, 3256-4, 453011, 47-9950, 48-9220, 513458, 7-0052	Washer - Flat 3/8 SAE Y/Zinc	4	
93	R323-6	01-150-0010, 01-178-0608, 20-47-AD, 20-47-AGD, 3224-2, 323-6, 49-3510, 908034P, 908332	Bolt - Hex HD 3/8-16 x 1 GR5 YZ	4	
94	R325-7	01-150-0380, 01-178-0814, 3226-3, 325-7, 48-9490	Bolt - 1/2-13 x 1 3/4 Hex HD Gr 5	2	

All original equipment manufacturers names and part numbers are used for identification purposes only, and we are in no way implying that our products are original equipment parts. Prices subject to change without notice.



Replaces Toro Groundsmaster 4110-D Parts

Rotary Mower - Model 30447
Front Deck Hydraulics and Spindles



Item No	R&R Part No.	OEM Part No.	Description	Qty Req	Order Quantity
95	R3253-7	01-166-0030, 01-166-0080, 01-166-0290, 01-166-0810, 23-13-GD, 3253-7, 48-9380	Washer - Lock 1/2	2	
96	R100-3102	100-3102	Washer-Flat	2	
97	R256-76	256-76	Bushing	4	
98	R458013	30-0580, 32120-72, 458013, 93-2525, 936125	Ring - Retaining	2	
99	R237-22	107-8844, 237-22, 237-78	O-Ring	1	
101	R302-5	21-6010, 302-11, 302-37, 302-47, 302-5, 302-57, 302-58, 302-6, 31-0300, 32-9660, 60-0800, 62-3880, 92-4181	Fitting - Grease	2	
102	R3296-56	3296-56	Nut - Lock - 1/4-20 ESNA Jam	2	
103	R104-0858	104-0858	Bolt - Shoulder	2	
104	R107938	107938	Spring - Extension	2	
105	R68-0090	68-0090	Screw - Adjusting	2	
106	R110-6128	110-6128	Idler Arm Assy	2	

All original equipment manufacturers names and part numbers are used for identification purposes only, and we are in no way implying that our products are original equipment parts. Prices subject to change without notice.



Replaces Toro Groundsmaster 4110-D Parts

*Rotary Mower - Model 30447
Front Deck Hydraulics and Spindles*



Item No	R&R Part No.	OEM Part No.	Description	Qty Req	Order Quantity
107	R93-7818	93-7818	Decal - Blade Torque	1	
110	R104-8301	104-8301, 104-9301, 109-6658, 133-7570	Locknut - 3/8-16 Nylon Flanged	20	

All original equipment manufacturers names and part numbers are used for identification purposes only, and we are in no way implying that our products are original equipment parts. Prices subject to change without notice.