

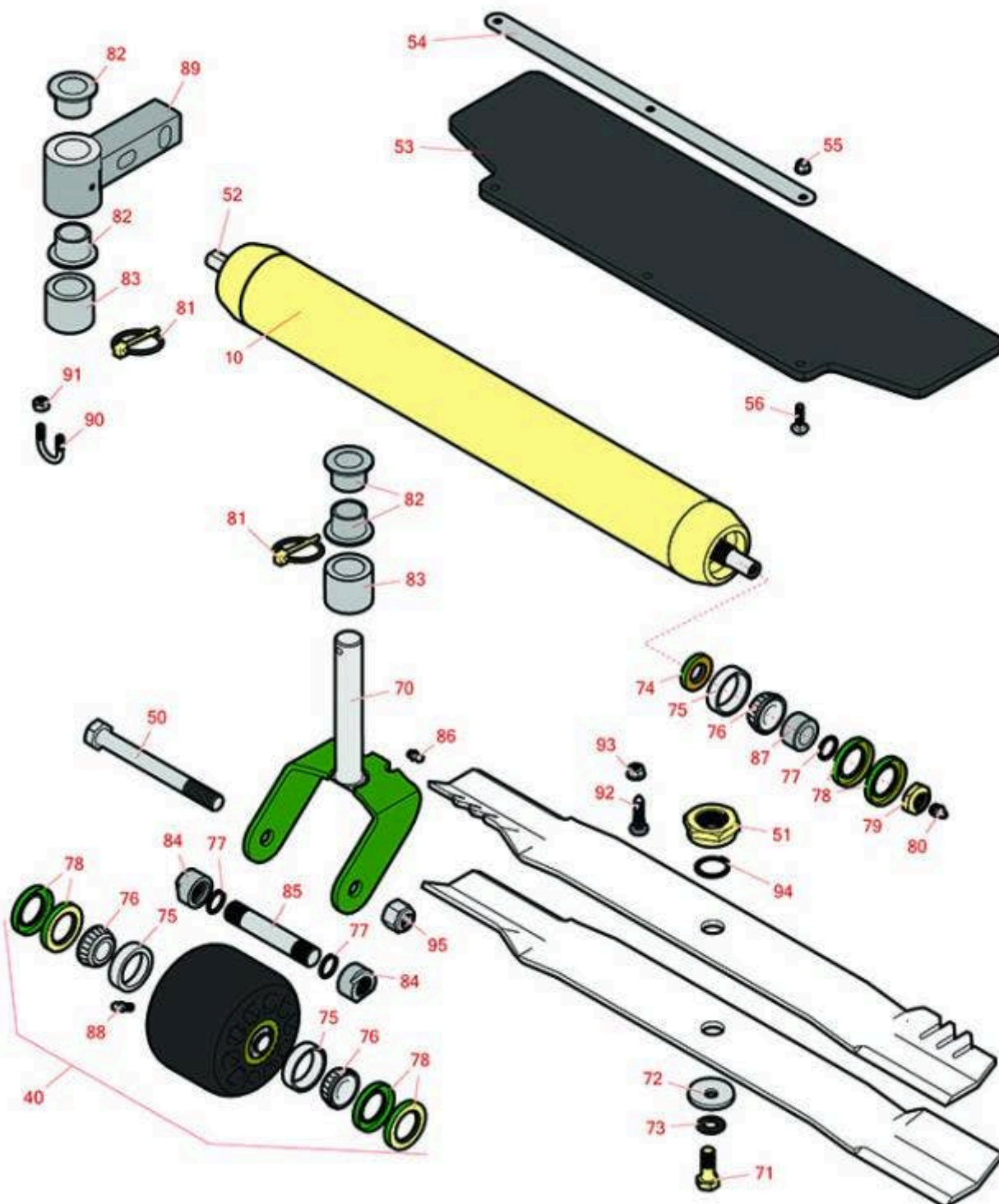


# Replaces John Deere 7400 Rotary

## Mower Parts

Rotary Cutting Unit

Rotary Cutting Unit



All original equipment manufacturers names and part numbers are used for identification purposes only, and we are in no way implying that our products are original equipment parts. Prices subject to change without notice.



# Replaces John Deere 7400 Rotary

## Mower Parts

Rotary Cutting Unit

Rotary Cutting Unit



Item No	R&R Part No.	OEM Part No.	Description	Qty Req	Order Quantity
---------	--------------	--------------	-------------	---------	----------------

### Roller

10	<b>RTCA17790</b>	TCA17790	Roller - Smooth 76 mm (3 in)	3	
----	------------------	----------	------------------------------	---	--

### Wheels

40	<b>RTCA19047</b>	TCA19047	Caster Wheel Assy	6	
----	------------------	----------	-------------------	---	--

### Other Parts Available

50	<b>R327-17</b>	19H3185	Axle - Caster Fork 5/8-11 x 6	6	
51	<b>RTCUC27862</b>	TCUC27862	Nut - Spindle	3	
52	<b>RTCUC23559</b>	TCUC23559	Shaft - Roller - 28 in	3	
53	<b>R500615</b>	TCUC23571	Rubber Guard	3	
54	<b>RTCUC23572</b>	TCUC23572	Strip - Retaining	3	
55	<b>R14M7397</b>	14M7397, 14M7463	Locknut - 6mm x 1.0 ESNA Flanged	9	
56	<b>R03M7232</b>	03M7232	Bolt - Carriage M6-1.0 x 25	9	
70	<b>RTCA17787</b>	TCA17787	Caster Fork Assy	6	
71	<b>RTCUC28104</b>	TCUC28104	Bolt - Blade 10.9 Hardness	3	
72	<b>RM147138</b>	M147138	Washer - Belville	3	
73	<b>RTCUC27937</b>	TCUC27937	Washer - Anti Friction	3	
74	<b>RET15756</b>	ET15756, MT1739, MT739	Seal	12	
75	<b>R254-79</b>	JD8226	Cup - Bearing	12	
<i>Detail Description: Use R254-79M installation mandrel to properly install race.:</i>					
76	<b>R254-78</b>	JD8188	Tapered Bearing Cone	12	

All original equipment manufacturers names and part numbers are used for identification purposes only, and we are in no way implying that our products are original equipment parts. Prices subject to change without notice.



# Replaces John Deere 7400 Rotary

## Mower Parts

Rotary Cutting Unit

Rotary Cutting Unit



Item No	R&R Part No.	OEM Part No.	Description	Qty Req	Order Quantity
77	<b>R237-54</b>	U46731, U6731	O-Ring - Small	12	
78	<b>RET15755</b>	ET15755	Seal - Oil	12	
79	<b>R3296-15</b>	N101345	Locknut - 3/4-16 Nylon Jam	6	
80	<b>R471219</b>	471219, 471231, JD7759, JD7798	Zerk - Grease	5	
81	<b>RM115827</b>	M115827	Pin - Quick Lock	6	
82	<b>RM83541</b>	M83541	Bushing - Flanged - 1 in ID	24	
83	<b>RTC24952</b>	TCU24952	Spacer	6	
84	<b>RTC26091</b>	TCU26091	Spacer	12	
85	<b>RTC26006</b>	TCU26006	Axle - (A)	6	
86	<b>R302-5</b>	JD7797, JD7842, JD7844	Fitting - Grease	6	
87	<b>RET15726</b>	ET15726, RET15726	Sleeve - Wear Hardened	6	
88	<b>R471217</b>	JD7803	Fitting - Grease	6	
89	<b>RTC25028</b>	TCU25028	Pivot	6	
90	<b>RB10937</b>	B10937	U - Bolt 1/4-20	6	
91	<b>R301504</b>	M40333	Locknut - ESNA 1/4-20	12	
92	<b>R19M7868</b>	19M7868	Bolt - M8-1.25 x 30 HHF	12	
93	<b>R14M7298</b>	14M7298	Nut - 8mm x 1.25 Flanged	12	
94	<b>R32120-2</b>	M42702	Ring - Retaining	3	

All original equipment manufacturers names and part numbers are used for identification purposes only, and we are in no way implying that our products are original equipment parts. Prices subject to change without notice.



# Replaces John Deere 7400 Rotary Mower Parts

*Rotary Cutting Unit*  
*Rotary Cutting Unit*



Item No	R&R Part No.	OEM Part No.	Description	Qty Req	Order Quantity
95	R3296-53	U44915	Locknut - 5/8-11 ESNA Yellow	6	

All original equipment manufacturers names and part numbers are used for identification purposes only, and we are in no way implying that our products are original equipment parts. Prices subject to change without notice.